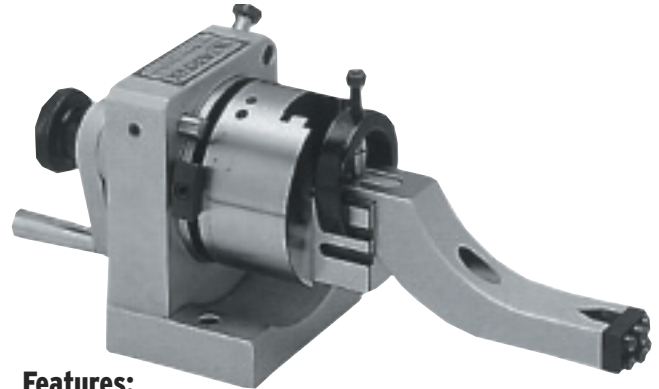




PUNCH FORMER

YCT-PB Punch Former

Punch former is the great dressing instrument. Precision forming of grinding wheels can be done by assembling an arm with the main body. Any combination of tangents or radii form of the grinding wheel may be dressed accurately by easy operation. Maximum diameter of grinding wheel within 200 mm can be dressed accurately and safely. The height from the base to roller's centre is 80mm. Movement of each side can reach 12.5 mm while aiming at the centre of V-block. The main body is one-piece steel construction.



Features:

- Punch former is the fixture to grind the point of standard punches and E.D.M. electrodes for precise and fast operation
- Besides the round, radius and multi-angle punches, any special forms can be ground precisely
- By using this attachment, it can be ground either concave or convex radius shape
- Capacity from 4 mm to 30 mm

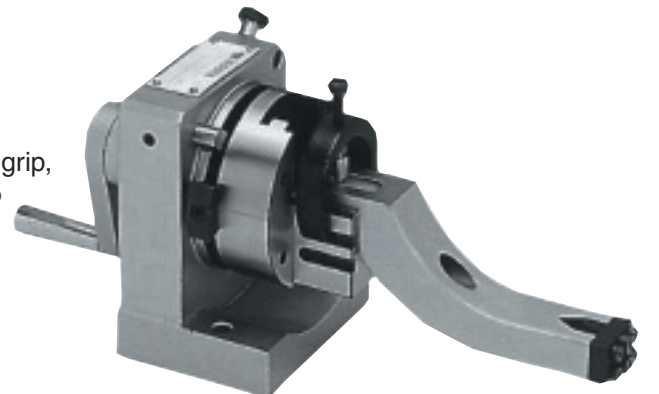
PUNCH FORMER		
Style	Code No.	Price \$
Off set	230-730	1,816.30

PUNCH FORMER

YCT-PS Punch Former

Features:

- YCT-PS can pass through from itself to the centre of grip, in case of facing a longer punch ejector pin, it can go deep into the grip position
- To assemble an arm with the main body, any combination of radii of the grinding wheel may be dressed accurately by easy operation
- The longer punch can also be ground



PUNCH FORMER		
Style	Code No.	Price \$
Through hole	230-735	1,497.70