



"MASTER GRIND"

5C Collet and V-Block Combination

- Built-in sine bar for setting angles between hard index locations
- 2 heavy duty 4" diameter tapered roller bearings in spindle
- Spindle runout .0005"
- Square and parallel within .0002"
- Extra large 1-5/8" V-block capacity
- Horizontal or vertical V-block mounting
- 72 position index plate for hard index every 5°
- Fitted wooden case included



MASTER GRIND

Model No.	V-Block Capacity	Collet Capacity	Through Hole	Centre Height	Base Height	Base Length	Base Width	Weight	Code No.	Price \$
MG5CVS1	1-5/8	all 5c	1-1/4	3	6	4	5	22	251-400	3,586.00

MASTER-GRIND™ ACCESSORIES

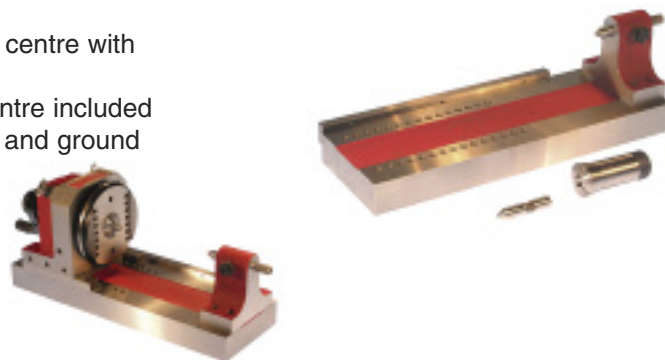
Motor Drive Kit:

- 1/15 HP, reversible, variable speed, 60 to 300 rpm
- Can be mounted on either side of the index fixture
- Includes mounting bracket, motor pulley, drive belt and screws



Baseplate and Tailstock

- Tailstock has 1/2" diameter spring loaded centre with lock screw
- 1/2" 5C collet and steel 60° headstock centre included
- Base plate and edge guide are hardened and ground



MASTER-GRIND™ ACCESSORIES

Model No.	Description	Weight	Code No.	Price \$
MG5-BTS	Baseplate/tailstock	22	251-405	1,438.10
MG5-MD	Motor drive kit	5	251-410	1,399.20