

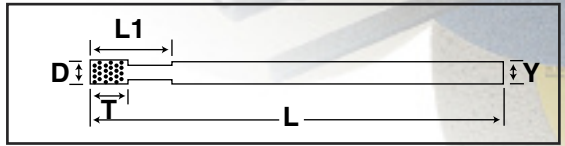
GRINDING PINS

DIAMOND GRINDING PINS

GP

Tolerance:

- Shank Y=0.118" h6 Shank Y=.236" h6
- Length ± 0.00787" Diameter ± 0.00591"



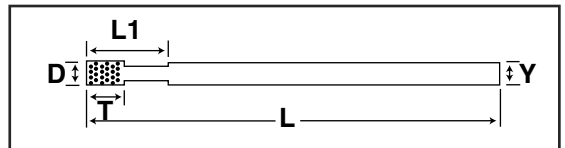
DIAMOND GRINDING PINS								DIAMOND GRINDING PINS							
Model No.	D (in)	T (in)	L1 (in)	L (in)	Y (in)	Code No.	Price \$	Model No.	D (in)	T (in)	L1 (in)	L (in)	Y (in)	Code No.	Price \$
2900	.020	.079	.250	2.156	1/8	636-200	33.05	2904AXL	.177	.236	.625	2.156	1/4	636-246	40.94
2900A	.029	.079	.250	2.156	1/8	636-202	25.92	2905	.197	.236	-	2.156	1/8	636-248	36.00
2901	.039	.079	.250	2.156	1/8	636-204	25.92	2905XL	.197	.236	.625	2.156	1/4	636-250	43.50
2901B	.049	.079	.250	2.156	1/8	636-206	26.50	2908	.236	.275	-	2.156	1/8	636-252	37.37
2901A	.059	.118	.500	2.156	1/8	636-208	24.95	2908XL	.236	.275	1.00	2.156	1/4	636-254	47.30
2901C	.069	.118	.500	2.156	1/8	636-210	25.71	2908A	.256	.275	1.00	3.00	1/4	636-256	46.23
2902	.079	.157	.500	2.156	1/8	636-212	25.71	2909	.315	.315	-	3.00	1/4	636-258	53.36
2902XL	.079	.157	.500	2.156	1/4	636-214	34.80	2910F	.335	.315	-	3.00	1/4	636-260	71.07
2902A	.089	.157	.500	2.156	1/8	636-216	25.71	2911	.394	.197	-	3.00	1/4	636-262	81.76
2902AXL	.089	.157	.500	2.156	1/4	636-218	34.80	2911XL	.394	.197	-	3.00	3/8	636-264	95.91
2902B	.099	.157	.500	2.156	1/8	636-220	29.16	2912	.394	.394	-	3.500	1/4	636-266	85.22
2902BXL	.099	.157	.500	2.156	1/4	636-222	36.29	2912XL	.394	.394	-	3.00	3/8	636-268	103.04
2902C	.109	.157	.500	2.156	1/8	636-224	29.16	2913D	.473	.394	-	3.500	1/4	636-270	92.34
2902CXL	.109	.157	.500	2.156	1/4	636-226	38.60	2913DXL	.473	.394	-	3.00	3/8	636-272	108.44
2903	.118	.157	.625	2.156	1/8	636-228	29.16	2914	.591	.197	-	3.500	1/4	636-274	113.30
2903XL	.118	.157	.625	2.156	1/4	636-230	36.29	2914XL	.591	.197	-	3.00	3/8	636-276	132.20
2903A	.130	.197	-	2.156	1/8	636-232	31.00	2915	.591	.394	-	3.500	1/4	636-278	113.30
2903AXL	.130	.197	.625	2.156	1/4	636-234	38.60	2915XL	.591	.394	-	3.00	3/8	636-280	124.31
2903B	.140	.197	-	2.156	1/8	636-236	29.16	2917	.730	.394	-	3.500	1/4	636-282	149.15
2903BXL	.140	.197	.625	2.156	1/4	636-238	36.29	2917XL	.730	.394	-	3.00	3/8	636-284	188.80
2904	.157	.197	-	2.156	1/8	636-240	33.81	2919XL	1.00	.394	-	3.500	3/8	636-286	226.50
2904XL	.157	.197	.625	2.156	1/4	636-242	40.94	2920XL	1.250	.394	-	3.500	3/8	636-288	264.30
2904A	.177	.236	-	2.156	1/8	636-244	33.81								

METRIC DIAMOND GRINDING PINS

GP

Tolerance:

- Shank Y=3 mm h6 Shank Y=6 mm h6
- Length ±0.20 mm Diameter ±0.15 mm

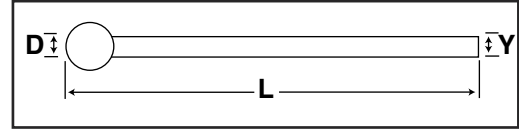


METRIC DIAMOND GRINDING PINS								METRIC DIAMOND GRINDING PINS							
Model No.	D (mm)	T (in)	L1 (mm)	L (mm)	Y (mm)	Code No.	Price \$	Model No.	D (mm)	T (in)	L1 (mm)	L (mm)	Y (mm)	Code No.	Price \$
GRAIN SIZE: 91								GP-13	4	5	-	55	3	636-314	32.20
GP-1	0.5	3	7	55	3	636-290	34.10	GP-14	4	5	20	60	6	636-316	45.40
GP-2	0.6	3	7	55	3	636-292	34.10	GP-15	5	6	-	55	6	636-318	36.00
GP-3	0.7	3	7	55	3	636-294	26.50	GP-16	5	6	20	60	6	636-320	53.00
GP-4	0.8	4	10	55	4	636-296	26.50	GP-17	6	8	20	60	6	636-322	60.50
GP-5	0.9	4	10	55	4	636-298	26.50	GP-18	7	8	-	60	6	636-324	63.94
GRAIN SIZE: 126								GP-19	8	10	-	60	6	636-326	75.50
GP-6	1	5	10	55	3	636-300	24.40	GP-20	9	10	-	60	6	636-328	83.10
GP-7	1.5	5	12	55	3	636-302	26.50	GP-21	10	10	-	60	6	636-330	94.40
GP-8	2	5	12	55	3	636-304	26.50	GP-22	11	10	-	60	6	636-332	98.20
GP-9	2.5	5	16	55	3	636-306	28.40	GP-23	12	10	-	60	6	636-334	102.00
GP-10	3	5	16	55	5	636-308	28.40	GP-24	13	10	-	60	6	636-336	109.60
GP-11	3.5	5	-	55	3	636-310	28.41	GP-25	14	10	-	60	6	636-338	113.30
GP-12	3.5	5	20	60	6	636-312	45.40	GP-26	15	10	-	60	6	636-340	120.90

GR - ROUND DIAMOND GRINDING PINS

The Diamond mounted Pins are employed in the external grinding of materials such as Tungsten Carbide (also before it is sintered), Ceramics, Glass and Hard Steels (40RC and up).

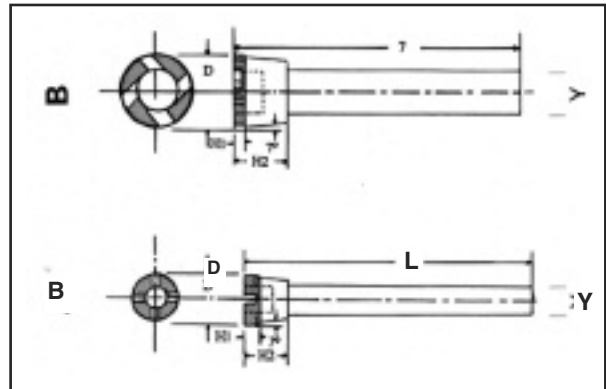
Grain Size: available in D&B 91, D&B 126, D&B 181



GR - ROUND DIAMOND GRINDING PINS						GR - ROUND DIAMOND GRINDING PINS					
Model No.	D (mm)	Y (mm)	L (mm)	Code No.	Price \$	Model No.	D (mm)	Y (mm)	L (mm)	Code No.	Price \$
GR-1	1	3	45	636-350	27.60	GR-7	7	6	60	636-362	51.63
GR-2	2	3	45	636-352	31.00	GR-8	8	6	60	636-364	66.10
GR-3	3	3	45	636-354	34.40	GR-9	9	6	60	636-366	68.26
GR-4	4	3	45	636-356	43.00	GR-10	10	6	60	636-368	79.06
GR-5	5	3	60	636-358	41.48	GR-11	11	6	60	636-370	94.10
GR-6	6	3	60	636-360	48.39	GR-12	12	6	60	636-372	100.55

BH - SERIES BOTTOMING PINS

The BH Series are manufactured for "Bottoming" and Shoulder Grinding. They have back taper, recessed centre and grinding dust exit slots. Two types are provided. Type A for diameters .315" - .473" and Type B for .591" - 1.00"



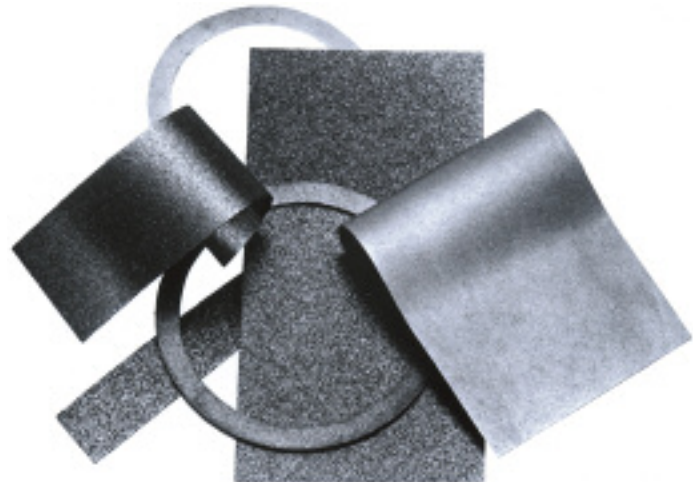
BH - SERIES BOTTOMING PINS							BH - SERIES BOTTOMING PINS								
Model No.	D (in)	H1 (in)	H2 (in)	L (in)	Y (in)	Code No.	Price \$	Model No.	D (in)	H1 (in)	H2 (in)	L (in)	Y (in)	Code No.	Price \$
6909BH	.315	.155	.414	2.500	1/4	636-374	70.90	6915XLBH	.591	.112	.482	2.500	3/8	636-382	124.30
6910FBH	.335	.087	.414	2.500	1/4	636-376	70.90	6917XLBH	.730	.112	.610	2.500	3/8	636-384	142.00
6911BH	.394	.093	.414	2.500	1/4	636-378	70.64	6919XLBH	1.000	.112	.770	2.500	3/8	636-386	183.90
6913DBH	.473	.143	.414	2.500	1/4	636-380	105.80								

S - DIAMOND STRIPS

The Diamond Strip is a very thin foil plated with 100% Diamond concentricity in different grit sizes. The high flexibility of the strip, enables to apply it in a wide range of applications. It can be cut with ordinary scissors to any desired shape and attached to a smooth surface with self-adhesive back.

Grain Size: available in grain size D15, D30, D54, D91, D126 and D181

Sizes (mm): 100 x 50, 100 x 25, and 50 x 12.5



We invite your inquiries.

Diamond Paste is also available.