



CNC Tooling

CAT TAPER SHELL MILL HOLDERS

- Shank traverse ground to obtain optimum accuracy
- Meets or exceeds ANSI specifications
- .0002" or better ensures the best possible cutting tool life



Pull Stud Arbor Screw Drive Key



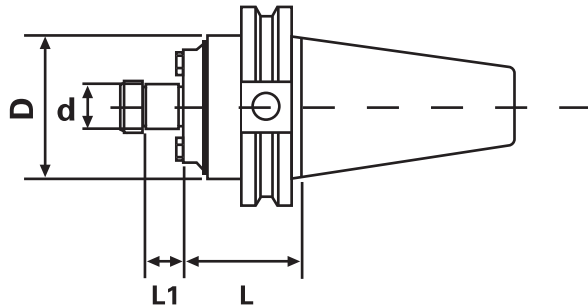
pg 788



pg 670



pg 670



CAT TAPER SHELL MILL HOLDERS								
Taper	d	L	D	L1	Key Size	Arbor Thread	Code No.	Price \$
CT40	1/2"	1.75"	1.38"	0.57"	1/4"	1/4"-28	531-190	136.00
CT40	3/4"	1.75"	2.00"	0.67"	5/16"	3/8"-24	531-192	136.00
		4.00"	2.00"	0.67"	5/16"	3/8"-24	531-194	157.80
CT40	1"	1.75"	2.38"	0.67"	3/8"	1/2"-20	531-196	136.00
		4.00"	2.38"	0.67"	3/8"	1/2"-20	531-198	157.80
CT40	1-1/4"	2.00"	2.88"	0.67"	1/2"	5/8"-18	531-200	136.00
		4.00"	2.88"	0.67"	1/2"	5/8"-18	531-202	157.80
CT40	1-1/2"	2.00"	3.80"	0.93"	5/8"	3/4"-16	531-204	136.00
		4.00"	3.80"	0.93"	5/8"	3/4"-16	531-206	157.80
CT50	3/4"	1.75"	2.00"	0.67"	5/16"	3/8"-24	531-208	170.80
		4.00"	2.00"	0.67"	5/16"	3/8"-24	531-210	187.40
CT50	3/4"	6.00"	2.00"	0.67"	5/16"	3/8"-24	531-212	192.90
		8.00"	2.00"	0.67"	5/16"	3/8"-24	531-214	234.10
CT50	1"	1.75"	2.75"	0.69"	3/8"	1/2"-20	531-216	170.80
		4.00"	2.75"	0.69"	3/8"	1/2"-20	531-218	187.40
CT50	1"	6.00"	2.75"	0.69"	3/8"	1/2"-20	531-220	192.90
		8.00"	2.75"	0.69"	3/8"	1/2"-20	531-222	234.10
CT50	1-1/4"	1.75"	2.88"	0.69"	1/2"	5/8"-18	531-224	174.40
		4.00"	2.88"	0.69"	1/2"	5/8"-18	531-226	192.40
CT50	1-1/4"	6.00"	2.88"	0.69"	1/2"	5/8"-18	531-228	210.30
		8.00"	2.88"	0.69"	1/2"	5/8"-18	531-230	241.80
CT50	1-1/2"	2.00"	3.80"	0.93"	5/8"	3/4"-16	531-232	191.20
		4.00"	3.80"	0.93"	5/8"	3/4"-16	531-234	209.80
CT50	1-1/2"	6.00"	3.80"	0.93"	5/8"	3/4"-16	531-236	228.00
		8.00"	3.80"	0.93"	5/8"	3/4"-16	531-238	265.40
CT50	2"	2.00"	4.38"	0.93"	3/4"	1"-14	531-240	215.80
		4.00"	4.38"	0.93"	3/4"	1"-14	531-242	249.40
CT50	2"	6.00"	4.38"	0.93"	3/4"	1"-14	531-244	263.80