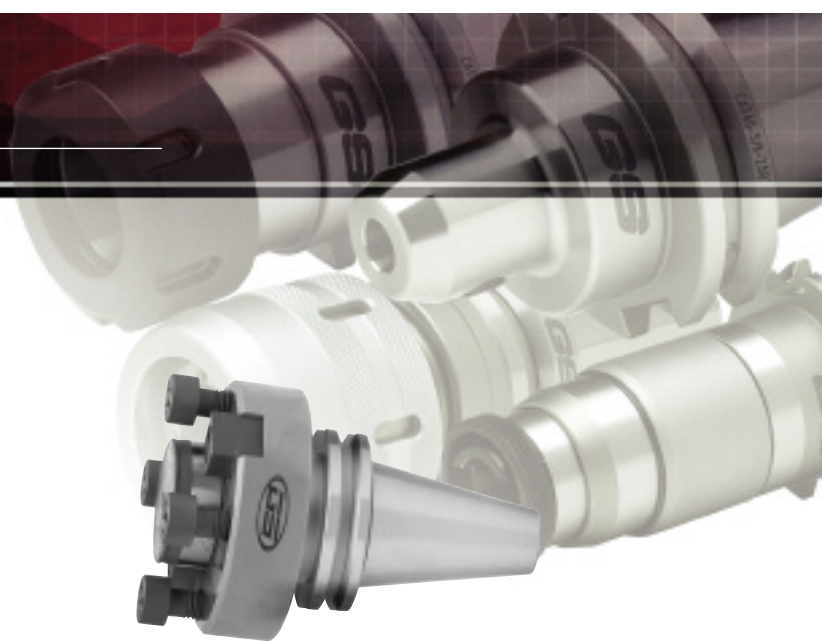





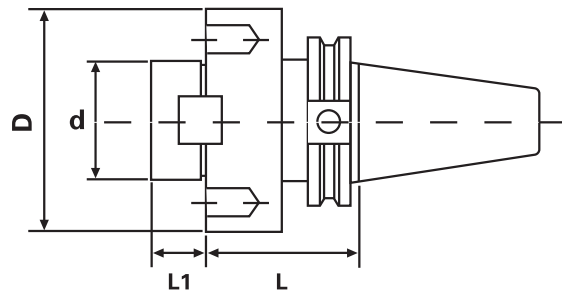
CAT 50 SHELL MILL HOLDERS



CAT 50 TAPER FACE MILL HOLDERS

- Shank traverse ground to obtain optimum accuracy
- Meets or exceeds ANSI specifications
- .0002" or better ensures the best possible cutting tool life

Pull Stud	Mounting Bolt	Drive Key
		
pg 788	pg 670	pg 670



CAT 50 TAPER FACE MILL HOLDERS							
Taper	d	L	D	L1	Key Size	Code No.	Price \$
CT50	2"	2.95"	5.06"	0.86"	3/4"	531-246	259.20
	2-1/2"	2.95"	5.00"	1.18"	1"	531-248	266.70