

# NMTB SHELL & FACE MILL HOLDERS



## Standard

Tooling

### NMTB TAPER SHELL MILL HOLDERS

- Shank traverse ground to obtain optimum accuracy
- Meets or exceeds ANSI specifications
- .0002" or better ensures the best possible cutting tool life

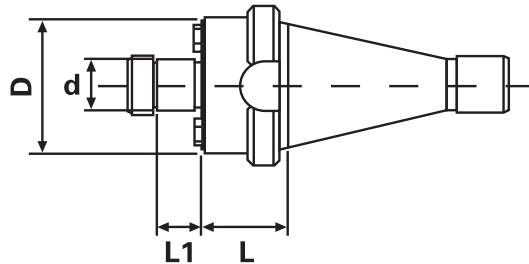
Arbor Screw    Drive Key



pg 670



pg 670



### NMTB TAPER SHELL MILL HOLDERS

Taper	d	L	D	L1	Key Size	Arbor Thread	Code No.	Price \$
NMTB40	1/2"	0.87"	1.38"	0.57"	1/4"	1/4"-28	534-130	131.90
	3/4"	0.87"	1.94"	0.67"	5/16"	3/8"-24	534-132	131.90
	1"	1.31"	2.38"	0.67"	3/8"	1/2"-20	534-134	131.90
NMTB50	1-1/4"	1.50"	2.88"	0.67"	1/2"	5/8"-18	534-136	131.90
	1-1/2"	1.63"	3.50"	0.93"	5/8"	3/4"-16	534-138	131.90
	3/4"	1.25"	2.00"	0.67"	5/16"	3/8"-24	534-140	166.00
NMTB50	1"	1.88"	2.38"	0.67"	3/8"	1/2"-20	534-142	171.10
	1-1/4"	1.88"	2.88"	0.67"	1/2"	5/8"-18	534-144	174.30
	1-1/2"	1.88"	3.50"	0.93"	5/8"	3/4"-16	534-146	191.40
	2"	1.88"	4.38"	0.93"	3/4"	1"-14	534-148	193.30

## Standard

Tooling

### NMTB TAPER FACE MILL HOLDERS

- Shank traverse ground to obtain optimum accuracy
- Meets or exceeds ANSI specifications
- .0002" or better ensures the best possible cutting tool life

Mounting Bolt

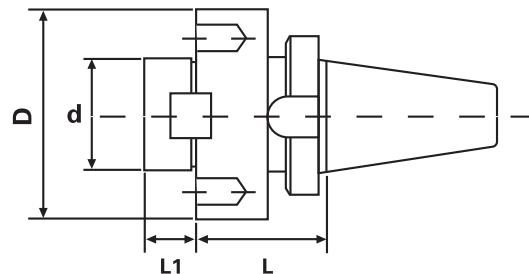
Drive Key



pg 670



pg 670



### NMTB TAPER FACE MILL HOLDERS

Taper	d	L	D	L1	Key Size	Code No.	Price \$
NMTB50	2"	3.00"	5.05"	0.87"	3/4"	534-150	191.40
	2-1/2"	3.00"	5.00"	1.18"	1"	534-152	193.30