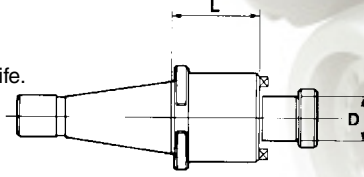


# STM NMTB & R8 SHELL MILL HOLDERS



## NMTB SHELL MILL HOLDERS

- Made of alloy forged steel for a durable service life.
- Hardened to RC 56-60 and ground
- Shell Mill Pilot T.I.R. <.0004"



## NMTB TAPER SHELL MILL HOLDERS

Taper	D (in)	L (in)	Square Key Size (in)	Arbor Thread	Draw Bar	Code No.	Price \$
30	1/2	1-1/4	1/4	1/4-28	1/2-13	410-105	105.00
30	3/4	15/16	5/16	3/8-24	1/2-13	410-110	165.00
30	1	15/16	3/8	1/2-20	1/2-13	410-115	182.60
30	1-1/4	17/16	1/2	5/8-11	1/2-13	410-120	190.00
40	1/2	7/8	1/4	1/4-28	5/8-11	410-125	118.20
40	3/4	7/8	5/16	3/8-24	5/8-11	410-130	185.70
40	1	15/16	3/8	1/2-20	5/8-11	410-135	191.70
40	1-1/4	1-1/2	1/2	5/8-11	5/8-11	410-140	213.90
40	1-1/2	1-5/8	5/8	3/4-16	5/8-11	410-145	285.80
40	2	1-3/4	3/4	1-14	5/8-11	410-150	419.00
50	1/2		1/4	1/4-28	1-8	410-155	202.72
50	3/4	1-1/4	5/16	3/8-24	1-8	410-160	188.40
50	1	1-7/8	3/8	1/2-20	1-8	410-165	188.40
50	1-1/4	1-7/8	1/2	5/8-18	1-8	410-170	283.90
50	1-1/2	1-7/8	5/8	3/4-16	1-8	410-175	314.50
50	2	1-7/8	3/4	1-14	1-8	410-180	451.70



## 4" EXTENSION TYPE SHELL HOLDERS



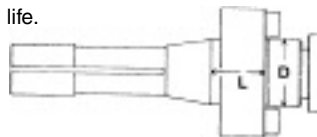
## 4" EXTENSION TYPE SHELL HOLDERS

NST Shank	Arbor Dia. (in.)	For Shell End Mills	Weight (lb)	Code No.	Price \$	NST Shank	Arbor Dia. (in.)	For Shell End Mills	Weight (lb)	Code No.	Price \$
40	3/4	1-3/4 to 2	3.5	410-209	197.60	50	1	2-1/4 to 2-3/4	8.6	410-215	316.40
40	1	2-1/2 to 2-3/4	3.9	410-210	138.35	50	1-1/4	3 to 3-1/2	10.6	410-220	316.40
						50	1-1/2	4 to 5	13.5	410-225	344.20



## R8 SHELL MILL HOLDERS

- Made of alloy forged steel for a durable service life.
- Hardened to RC 56-60 and ground
- Shell Mill Pilot T.I.R. <.0004"



## R-8 SHELL MILL HOLDERS

Taper	D (in)	L (in)	Square Key Size (in)	Arbor Thread	Draw Bar	Code No.	Price \$
R-8	1/2	1	3/8	1/4-28	7/16-20	410-505	122.30
R-8	3/4	1	5/16	3/8-24	7/16-20	410-510	125.10
R-8	1	1	3/8	1/2-20	7/16-20	410-515	135.70
R-8	1-1/4	1	1/2	5/8-11	7/16-20	410-520	153.70
R-8	1-1/2	1-3/4	5/8	3/4-16	7/16-20	410-525	209.10



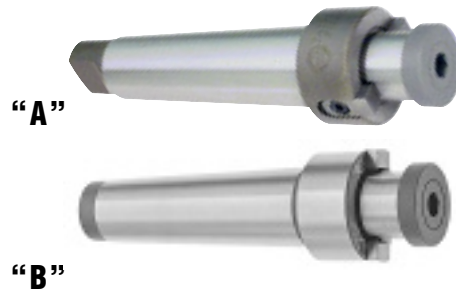
## SHELL END MILL ARBORS FOR MORSE TAPER SPINDLES

Style "B" with Draw Bar End

Style "A" with Tang End

Machined from one piece forgings, hardened and precisely ground; hardness 52-56 HRC. Maximum misalignment of taper in shank, in which the tool is fixed: .0006". The drive keys are pressed in.

- Draw bar threads for #4 MT: 1/2"-13
- Draw bar threads for #5 MT: 5/8"-11



■ SHELL END MILL ARBORS							
Draw Bar Arbor No.	Morse Taper No.	Dia. for Bore in Shell End Mill	Dia. for Range of Shell End Mill	Style "B" Draw Bar End Code No.	Price \$	Style "A" Tang End Code No.	Price \$
MT4-1/2	4	1/2	1-1/4 to 1-1/2	410-405	<b>165.50</b>	410-305	<b>164.80</b>
MT4-3/4	4	3/4	1-3/4 to 2	410-410	<b>174.20</b>	410-310	<b>174.00</b>
MT4-1	4	1	2-1/4 to 2-3/4	410-415	<b>185.50</b>	410-315	<b>185.70</b>
MT4-1-1/4	4	1-1/4	3 to 3-1/2	410-420	<b>110.16</b>	410-320	<b>210.00</b>
MT4-1-1/2	4	1-1/2	4 to 5	410-425	<b>116.64</b>	410-325	<b>220.50</b>
MT5-1	5	1	2-1/4 to 2-3/4	410-430	<b>194.70</b>	410-330	<b>196.60</b>
MT5-1-1/4	5	1-1/4	3 to 3-1/2	410-435	<b>219.60</b>	410-335	<b>219.60</b>
MT5-1-1/2	5	1-1/2	4 to 5	410-440	<b>232.10</b>	410-340	<b>234.90</b>



## FACE MILL HOLDERS FOR FACE MILLING CUTTERS

Made of selected steel, hardened and precision ground

- These holders have 4 mounting holes and bolts with 5/8-11 threads on a 4" bolt circle



■ FACE MILL HOLDERS					
Type of Shank	Face Mill Cutter Bore Dia.	Length of Arbor	Screw Size	Code No.	Price \$
ISA 40	2	6.20	5/8-11	410-190	<b>501.50</b>
ISA 40	2-1/2	6.20	5/8-11	410-192	<b>497.60</b>
ISA 50	2	7.56	5/8-11	410-194	<b>564.70</b>
ISA 50	2-1/2	7.56	5/8-11	410-196	<b>561.00</b>
ISA 60	2	10.70	5/8-11	410-198	<b>862.38</b>

Type of Shank	Face Mill Cutter Bore Dia.	Length of Arbor	Screw Size	Code No.	Price \$
ISA 60	2-1/2	10.70	5/8-11	410-200	<b>2,542.50</b>
MT 5	2	9.57	5/8-11	410-202	<b>832.30</b>
MT 5	2-1/2	9.57	5/8-11	410-204	<b>829.30</b>
MT 6	2	13.58	5/8-11	410-206	<b>1,040.30</b>
MT 6	2-1/2	13.58	5/8-11	410-208	<b>1,037.30</b>