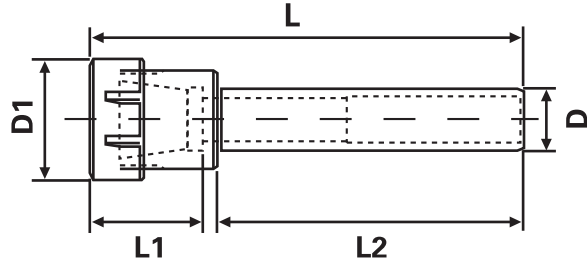
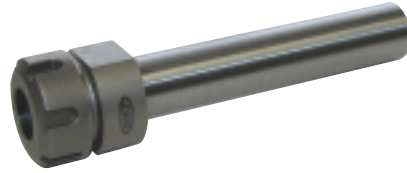




ER COLLET CHUCK EXTENSIONS

- Wrench not included



ER COLLET CHUCK EXTENSIONS								
Collet Series	Collet Range	Shank Dia. (D)	D1	L	L1	L2	Code No.	Price \$
ER11	.019-.275"	1/2	.075"	6.11"	.091"	5.00"	534-368	136.20
ER11	.019-.275"	5/8	.075"	6.11"	.091"	5.00"	534-370	136.20
ER11	.019-.275"	3/4	.075"	5.65"	.091"	5.00"	534-372	136.20
ER16	.019-.406"	5/8	1.26"	6.48"	1.28"	5.00"	534-374	136.20
ER16	.019-.406"	3/4	1.26"	6.48"	1.28"	5.00"	534-376	136.20
ER16	.019-.406"	1	1.26"	5.89"	1.28"	5.00"	534-378	146.00
ER20	.039-.511"	3/4	1.38"	6.67"	1.48"	5.00"	534-380	136.20
ER20	.039-.511"	1	1.38"	6.40"	1.48"	5.00"	534-382	146.00
ER20	.039-.511"	1-1/4	1.38"	6.40"	1.48"	5.00"	534-384	146.00
ER25	.039-.629"	3/4	1.65"	6.85"	1.65"	5.00"	534-386	146.50
ER25	.039-.629"	1	1.65"	6.85"	1.65"	5.00"	534-388	146.50
ER25	.039-.629"	1-1/4	1.65"	6.00"	1.65"	5.00"	534-390	146.50
ER32	.078-.787"	1	1.97"	7.09"	1.85"	5.00"	534-392	152.80
ER32	.078-.787"	1-1/4	1.97"	7.09"	1.85"	5.00"	534-394	154.90