



### CNC Tooling

#### CAT TAPER MILLING CHUCKS

Extreme Rigidity - The extra thick design assures a powerful clamping force capability, minimizing vibration and distortion. Long Life - Superior steel alloy allows tough hardening treatment for greater durability. Bore Slots - High accuracy and a very powerful gripping force is achieved evenly over the entire length of the chuck right down to the nose. This is generated by the long fine slots of the internal bore which is an integral part of the entire body. This design further assures accuracy by its self-centering operation. When the nut is firmly clamped, the greater the concentricity.

- Rough milling or 'hogging' operations
- Improved tool life over regular end-mill holders '360°' gripping contact
- Extreme rigidity over taper collets
- 0.0002" TIR for maximum tool life and accuracy

Wrench

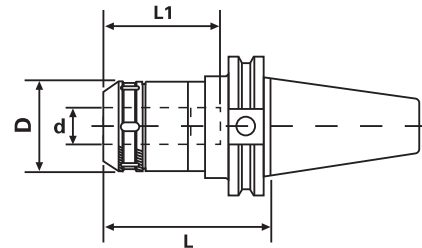


pg 710

Collet



pg 709-710



#### ■ CAT TAPER MILLING CHUCKS

Taper	Collet Series	Clamping Range	d	L	L1	D	Code No.	Price \$
CT40	GS 3/4"	.125-.750"	.750"	4.14"	3.15"	2.05"	531-250	272.10
CT40	GS 3/4"	.125-.750"	.750"	4.73"	3.15"	2.05"	531-252	272.10
CT40	GS 1"	.125-1.00"	1.00"	4.14"	3.15"	2.41"	531-254	272.10
CT40	GS 1-1/4"	.187-1.25"	1.25"	4.14"	3.34"	2.88"	531-256	272.10
CT40	GS 1-1/4"	.187-1.25"	1.25"	5.32"	4.73"	2.88"	531-258	335.90
CT50	GS 3/4"	.125-.750"	.750"	4.14"	3.15"	2.05"	531-260	339.80
CT50	GS 3/4"	.125-.750"	.750"	5.32"	3.15"	2.05"	531-262	339.80
CT50	GS 1"	.125-1.00"	1.00"	4.14"	3.15"	2.41"	531-264	339.80
CT50	GS 1-1/4"	.187-1.25"	1.25"	4.14"	4.73"	2.88"	531-266	339.80
CT50	GS 1-1/4"	.187-1.25"	1.25"	5.32"	4.73"	2.88"	531-268	339.70

### CNC

Tooling

#### BT TAPER MILLING CHUCKS

Wrench

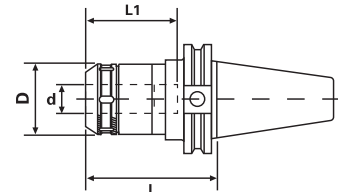


pg 710

Collet



pg 709-710



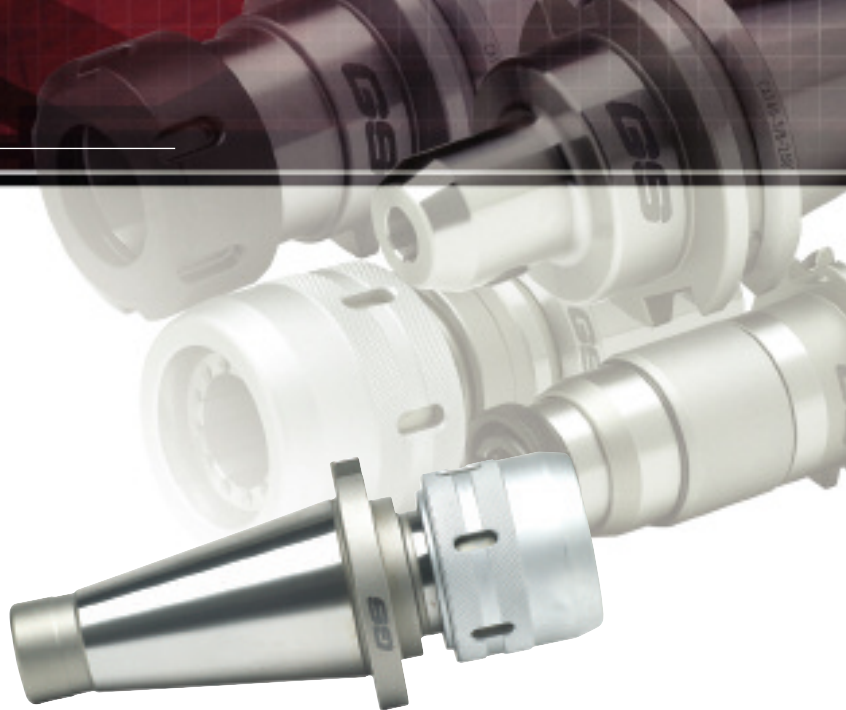
#### ■ BT TAPER MILLING CHUCKS

Taper	Collet Series	Clamping Range	d	L	L1	D	Code No.	Price \$
BT30	GS 3/4"	.125-.750"	.750"	3.55"	3.15"	2.05"	532-096	258.50
BT40	GS 3/4"	.125-.750"	.750"	4.14"	3.15"	2.05"	532-098	272.10
BT40	GS 3/4"	.125-.750"	.750"	4.73"	3.15"	2.05"	532-100	272.10
BT40	GS 1"	.125-1.00"	1.00"	4.14"	3.15"	2.41"	532-102	272.10
BT40	GS 1-1/4"	.187-1.25"	1.25"	4.14"	3.34"	2.88"	532-104	272.10
BT40	GS 1-1/4"	.187-1.25"	1.25"	5.32"	4.73"	2.88"	532-106	259.10
BT50	GS 3/4"	.125-.750"	.750"	3.60"	3.15"	2.05"	532-109	318.10
BT50	GS 1-1/4"	.187-1.25"	1.25"	4.20"	3.34"	2.88"	532-113	323.30



## Standard Tooling

### NMTB TAPER MILLING CHUCKS



Wrench

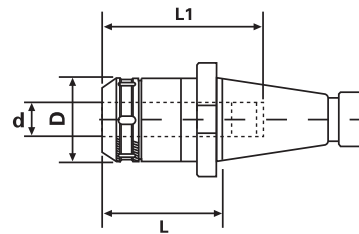


pg 710

Collet



pg 709-710



### NMTB TAPER MILLING CHUCKS

Taper	Collet Series	Clamping Range	d	L	L1	D	Code No.	Price \$
NMTB40	GS 3/4	.125-.750"	.750"	3.55"	3.15"	2.05"	534-200	<b>247.40</b>
NMTB40	GS 1-1/4	.187-1.25"	1.25"	3.55"	3.00"	2.88"	534-202	<b>255.00</b>
NMTB50	GS 3/4	.125-.750"	.750"	4.14"	3.15"	2.05"	534-204	<b>303.00</b>
NMTB50	GS 1-1/4	.187-1.25"	1.25"	3.35"	4.72"	2.88"	534-206	<b>323.30</b>

### GS 3/4" MILLING COLLETS

- Inch
- Metric



### GS 3/4" MILLING COLLETS

Size	Code No.	Price \$
1/8"	534-650	<b>23.60</b>
3/16"	331-469N	<b>23.60</b>
1/4"	331-470N	<b>23.60</b>
5/16"	331-472N	<b>23.60</b>
3/8"	331-474N	<b>23.60</b>
7/16"	534-660	<b>23.60</b>
1/2"	331-476N	<b>23.60</b>
9/16"	331-477N	<b>23.60</b>
5/8"	331-478N	<b>23.60</b>
6mm	534-668	<b>23.60</b>
7mm	534-670	<b>26.60</b>
8mm	534-672	<b>32.73</b>
10mm	534-674	<b>26.60</b>
12mm	534-676	<b>26.60</b>
14mm	534-678	<b>26.60</b>
16mm	534-680	<b>26.60</b>


**GS 1" MILLING COLLETS**

- Inch
- Metric

■ GS 1" MILLING COLLETS		
Size	Code No.	Price \$
1/8"	534-682	29.50
3/16"	534-684	29.50
1/4"	534-686	29.50
5/16"	534-688	29.50
3/8"	534-690	29.50
7/16"	534-692	29.50
1/2"	534-694	29.50
5/8"	534-696	29.50
3/4"	534-698	29.50
7/8"	534-700	29.50
6mm	534-702	29.50
8mm	534-704	29.50
10mm	534-706	29.50
12mm	534-708	29.50
14mm	534-710	29.50
16mm	534-712	29.50
18mm	534-714	29.50
20mm	534-716	29.50


**GS 1-1/4" MILLING COLLETS**

- Inch
- Metric

■ GS 1-1/4" MILLING COLLETS		
Size	Code No.	Price \$
3/16"	331-481N	32.90
1/4"	331-482N	32.90
5/16"	331-484N	32.90
3/8"	331-486N	32.90
7/16"	534-726	32.90
1/2"	331-488N	32.90
9/16"	331-489N	32.90
5/8"	331-490N	32.90
3/4"	331-492N	32.90
7/8"	331-494N	32.90
1"	331-496N	29.30
6mm	534-740	32.90
8mm	534-742	32.90
10mm	534-744	32.90
12mm	534-746	32.90
14mm	534-748	32.90
16mm	534-750	32.90
20mm	534-752	32.90
25mm	534-754	32.90


**MILLING CHUCK WRENCHES**

■ MILLING CHUCK WRENCHES		
Chuck Cap	Code No.	Price \$
3/4"	534-208	36.30
1"	534-210	36.30
1-1/4"	534-212	36.30

