

DOUBLE ANGLE COLLET CHUCKS



CNC

Tooling

CAT TAPER DA COLLET CHUCKS

CAT 40 CAT 50 Pull Stud Nut DA Collet

20x
RPMs

15x
RPMs



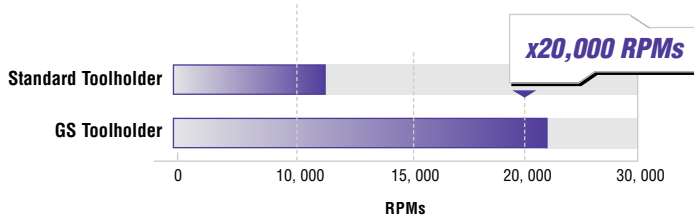
pg 788



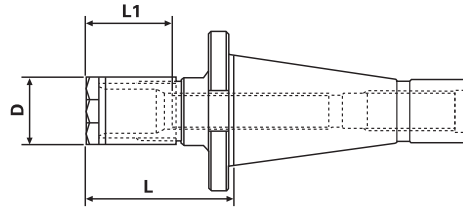
pg 712



pg 713



Each holder comes complete with certificate



CAT TAPER DA COLLET CHUCKS

Taper	Collet Series	Collet Range	L	L1	D	Code No.	Price \$
CT40	100DA	3/64-9/16"	3.50"	1.15"	1.06"	531-270	125.70
CT40	100DA	3/64-9/16"	6.00"	1.15"	1.06"	531-272	135.30
CT40	180DA	3/64-3/4"	4.00"	1.50"	1.44"	531-273	125.70
CT40	180DA	3/64-3/4"	6.00"	1.50"	1.44"	531-274	135.30
CT40	200DA	3/64-3/8"	3.00"	1.03"	0.86"	531-275	125.70
CT50	180DA	3/64-3/4"	4.00"	1.50"	1.44"	531-278	176.60
CT50	180DA	3/64-3/4"	6.00"	1.50"	1.44"	531-280	176.60

BT TAPER DA COLLET CHUCKS

BT 30/40 BT 50 Pull Stud Nut DA Collet

20x
RPMs

15x
RPMs



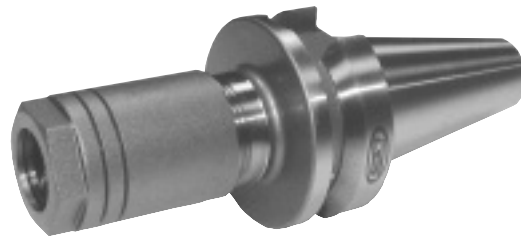
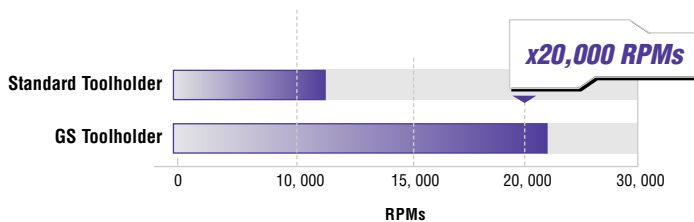
pg 788



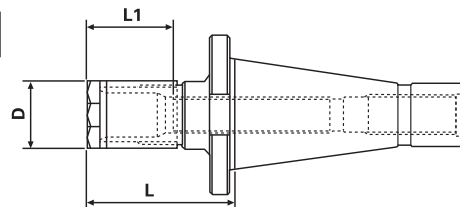
pg 712



pg 713



Each holder comes complete with certificate



BT TAPER DA COLLET CHUCKS

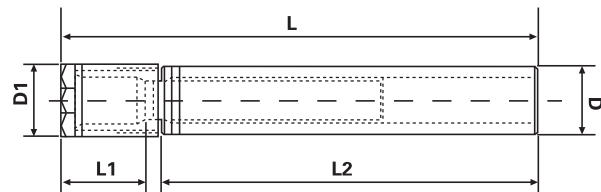
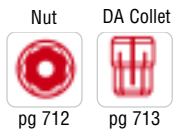
Taper	Collet Series	Collet Range	L	L1	D	Code No.	Price \$
BT30	100DA	3/64-9/16"	3.00"	1.15"	1.06"	532-108	119.50
BT30	180DA	3/64-3/4"	3.00"	1.51"	1.44"	532-110	119.50
BT30	200DA	3/64-3/8"	3.00"	1.03"	0.86"	532-112	119.50
BT40	100DA	3/64-9/16"	3.50"	1.15"	1.06"	532-116	125.70
BT40	100DA	3/64-9/16"	6.00"	1.15"	1.06"	532-118	135.30
BT40	180DA	3/64-3/4"	4.00"	1.51"	1.44"	532-120	125.70
BT40	180DA	3/64-3/4"	6.00"	1.51"	1.44"	532-122	135.30
BT40	200DA	3/64-3/8"	3.00"	1.03"	0.86"	532-124	125.70



Standard

Tooling

DA COLLET CHUCK EXTENSIONS



DA COLLET CHUCK EXTENSIONS									
Collet Series	Collet Range	Shank Dia. (D)	O.A.L. (L)	L1	L2	D1	Code No.	Price \$	
100DA	3/64-9/16"	1"	5.00"	1.66"	3.00"	1.06"	534-220	124.30	
100DA	3/64-9/16"	1"	7.50"	1.66"	5.50"	1.06"	534-222	136.70	
180DA	3/64-3/4"	1-1/4"	5.00"	1.83"	3.00"	1.44"	534-224	124.30	
180DA	3/64-3/4"	1-1/4"	7.50"	1.83"	5.50"	1.44"	534-226	136.70	
200DA	3/64-3/8"	3/4"	4.50"	1.34"	3.00"	0.86"	534-228	125.70	
200DA	3/64-3/8"	3/4"	7.00"	1.34"	5.50"	0.86"	534-230	144.30	

REPLACEMENT DA CHUCK NUT

REPLACEMENT DA CHUCK NUT		
Description	Code No.	Price \$
100DA, Complete Replacement	534-264	64.40
180DA Nut, Complete Replacement	534-270	66.80
200DA Nut, Complete Replacement	534-276	64.00



REPLACEMENT DA BACKUP SCREWS

REPLACEMENT DA BACKUP SCREWS		
Description	Code No.	Price \$
All CT, BT, NMTB 100DA chucks	534-284	12.90
100DA Chuck Extensions	534-286	14.20
All CT, BT, NMTB 180DA chucks	534-288	15.40
180DA Chuck Extensions	534-290	17.00
All 40-taper 200DA chucks	534-292	12.90
200DA Chuck Extensions	534-294	17.00
BT30 & BT35 200DA Chucks	534-296	12.80