

# DOUBLE ANGLE COLLETS



## DA-100 COLLETS

| DA-100 COLLETS  |              |          |          |
|-----------------|--------------|----------|----------|
| Fractional Inch | Decimal Inch | Code No. | Price \$ |
| 3/64            | .047         | 331-323  | 18.90    |
| 1/16            | .062         | 331-325  | 18.90    |
| 5/64            | .078         | 331-327  | 17.80    |
| 3/32            | .094         | 331-329  | 18.90    |
| 7/64            | .109         | 331-333  | 18.90    |
| 1/8             | .125         | 331-335  | 17.80    |
| 9/64            | .141         | 331-337  | 17.80    |
| 5/32            | .156         | 331-339  | 17.80    |
| 11/64           | .172         | 331-341  | 17.80    |
| 3/16            | .188         | 331-343  | 17.80    |
| 13/64           | .203         | 331-345  | 17.80    |
| 7/32            | .219         | 331-347  | 17.80    |
| 15/64           | .234         | 331-349  | 17.80    |
| 1/4             | .250         | 331-351  | 17.80    |
| 17/64           | .266         | 331-353  | 17.80    |
| 9/32            | .281         | 331-355  | 17.80    |

| DA-100 COLLETS  |              |          |          |
|-----------------|--------------|----------|----------|
| Fractional Inch | Decimal Inch | Code No. | Price \$ |
| 19/64           | .297         | 331-357  | 17.80    |
| 5/16            | .312         | 331-359  | 17.80    |
| 21/64           | .328         | 331-503  | 17.80    |
| 11/32           | .344         | 331-505  | 17.80    |
| 23/64           | .359         | 331-507  | 17.80    |
| 3/8             | .375         | 331-322  | 17.80    |
| 25/64           | .391         | 331-509  | 17.80    |
| 13/32           | .406         | 331-324  | 17.80    |
| 27/64           | .422         | 331-511  | 17.80    |
| 7/16            | .438         | 331-326  | 17.80    |
| 29/64           | .453         | 331-513  | 17.80    |
| 15/32           | .469         | 331-328  | 17.80    |
| 31/64           | .484         | 331-515  | 17.80    |
| 1/2             | .500         | 331-330  | 17.80    |
| 33/64           | .516         | 331-517  | 17.80    |
| 17/32           | .531         | 331-332  | 17.80    |
| 35/64           | .547         | 331-519  | 17.80    |
| 9/16            | .562         | 331-521  | 17.80    |

## DA-180 COLLETS

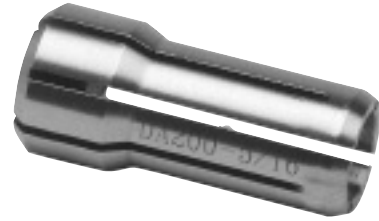
| DA-180 COLLETS  |              |          |          |
|-----------------|--------------|----------|----------|
| Fractional Inch | Decimal Inch | Code No. | Price \$ |
| 3/64            | .046         | 331-523  | 20.70    |
| 1/16            | .062         | 331-525  | 20.70    |
| 5/64            | .078         | 331-527  | 11.10    |
| 3/32            | .094         | 331-529  | 20.70    |
| 7/64            | .109         | 331-533  | 20.70    |
| 1/8             | .125         | 331-535  | 19.80    |
| 9/64            | .141         | 331-537  | 19.80    |
| 5/32            | .156         | 331-539  | 19.80    |
| 11/64           | .172         | 331-541  | 19.80    |
| 3/16            | .188         | 331-543  | 19.80    |
| 13/64           | .203         | 331-545  | 19.80    |
| 7/32            | .219         | 331-547  | 19.80    |
| 15/64           | .234         | 331-549  | 19.80    |
| 1/4             | .250         | 331-551  | 19.80    |
| 17/64           | .266         | 331-553  | 19.80    |
| 9/32            | .281         | 331-555  | 19.80    |
| 19/64           | .297         | 331-557  | 19.80    |
| 5/16            | .312         | 331-559  | 19.80    |
| 21/64           | .328         | 331-561  | 19.80    |
| 11/32           | .344         | 331-563  | 19.80    |
| 23/64           | .359         | 331-565  | 19.80    |

| DA-180 COLLETS  |              |          |          |
|-----------------|--------------|----------|----------|
| Fractional Inch | Decimal Inch | Code No. | Price \$ |
| 3/8             | .375         | 331-567  | 19.80    |
| 25/64           | .391         | 331-569  | 19.80    |
| 13/32           | .406         | 331-571  | 19.80    |
| 27/64           | .422         | 331-573  | 19.80    |
| 7/16            | .438         | 331-575  | 19.80    |
| 29/64           | .453         | 331-577  | 19.80    |
| 15/32           | .469         | 331-579  | 19.80    |
| 31/64           | .484         | 331-581  | 19.80    |
| 1/2             | .500         | 331-583  | 19.80    |
| 33/64           | .516         | 331-585  | 19.80    |
| 17/32           | .531         | 331-587  | 19.80    |
| 35/64           | .547         | 331-589  | 18.50    |
| 9/16            | .562         | 331-334  | 19.80    |
| 37/64           | .578         | 331-595  | 19.80    |
| 19/32           | .594         | 331-336  | 19.80    |
| 39/64           | .609         | 331-597  | 19.80    |
| 5/8             | .625         | 331-338  | 19.80    |
| 41/64           | .641         | 331-601  | 19.80    |
| 21/32           | .656         | 331-340  | 19.80    |
| 43/64           | .672         | 331-603  | 19.80    |
| 11/16           | .688         | 331-342  | 19.80    |
| 45/64           | .703         | 331-605  | 19.80    |
| 23/32           | .719         | 331-344  | 19.80    |
| 47/64           | .734         | 331-607  | 19.80    |
| 3/4             | .750         | 331-346  | 19.80    |



**COLLETS CONTINUED.**

### DA-200 COLLETS



| DA-200 COLLETS  |              |          |          |
|-----------------|--------------|----------|----------|
| Fractional Inch | Decimal Inch | Code No. | Price \$ |
| 3/64            | .047         | 331-297  | 17.80    |
| 1/16            | .062         | 331-299  | 17.80    |
| 5/64            | .078         | 331-301  | 17.00    |
| 3/32            | .094         | 331-303  | 17.80    |
| 7/64            | .109         | 331-305  | 17.80    |
| 1/8             | .125         | 331-307  | 17.00    |
| 9/64            | .141         | 331-309  | 17.00    |
| 5/32            | .156         | 331-311  | 17.00    |
| 11/64           | .172         | 331-313  | 17.00    |
| 3/16            | .188         | 331-315  | 17.00    |
| 13/64           | .203         | 331-302  | 17.00    |

| DA-200 COLLETS  |              |          |          |
|-----------------|--------------|----------|----------|
| Fractional Inch | Decimal Inch | Code No. | Price \$ |
| 7/32            | .219         | 331-304  | 17.00    |
| 15/64           | .234         | 331-306  | 17.00    |
| 1/4             | .250         | 331-308  | 17.00    |
| 17/64           | .266         | 331-310  | 17.00    |
| 9/32            | .281         | 331-312  | 17.00    |
| 19/64           | .297         | 331-314  | 17.00    |
| 5/16            | .312         | 331-316  | 17.00    |
| 21/64           | .328         | 331-318  | 17.00    |
| 11/32           | .344         | 331-320  | 17.00    |
| 23/64           | .359         | 331-317  | 17.00    |
| 3/8             | .375         | 331-319  | 17.00    |
| 25/64           | .391         | 331-321  | 17.00    |

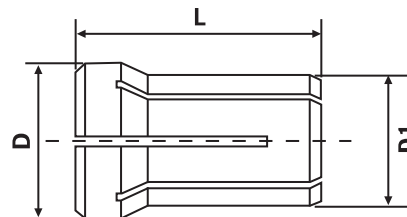
### DA-300 COLLETS

| DA-300 COLLETS  |              |          |          |
|-----------------|--------------|----------|----------|
| Fractional Inch | Decimal Inch | Code No. | Price \$ |
| 1/32            | .031         | 331-275  | 17.00    |
| 3/64            | .047         | 331-277  | 17.80    |
| 1/16            | .062         | 331-283  | 17.80    |
| 5/64            | .078         | 331-285  | 17.80    |
| 3/32            | .094         | 331-287  | 17.80    |
| 7/64            | .109         | 331-290  | 17.80    |
| 1/8             | .125         | 331-292  | 17.00    |
| 9/64            | .141         | 331-294  | 17.00    |

| DA-300 COLLETS  |              |          |          |
|-----------------|--------------|----------|----------|
| Fractional Inch | Decimal Inch | Code No. | Price \$ |
| 5/32            | .156         | 331-296  | 17.00    |
| 11/64           | .172         | 331-298  | 17.00    |
| 3/16            | .188         | 331-300  | 17.00    |
| 13/64           | .203         | 331-289  | 17.00    |
| 7/32            | .219         | 331-291  | 17.00    |
| 15/64           | .234         | 331-293  | 17.00    |
| 1/4             | .250         | 331-295  | 17.00    |

### COLLET DIMENSIONAL DATA

DA Collets



| COLLET DIMENSIONAL DATA |        |        |        |              |
|-------------------------|--------|--------|--------|--------------|
| Style                   | D      | D1     | L      | Collet Range |
| 300DA                   | 0.375" | 0.300" | 1.000" | 3/64-1/4"    |
| 200DA                   | 0.539" | 0.453" | 1.193" | 3/64-3/8"    |
| 100DA                   | 0.769" | 0.635" | 1.441" | 3/64-9/16"   |
| 180DA                   | 1.035" | 0.873" | 1.637" | 3/64-3/4"    |