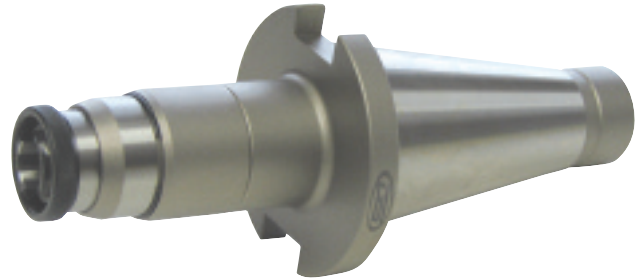
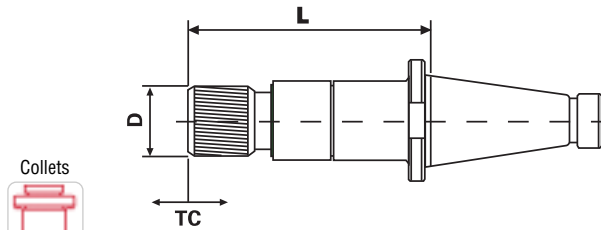




Standard

Tooling

NMTB TAPER TENSION/COMPRESSION TAP HOLDERS



NMTB TAPER TENSION/COMPRESSION TAP HOLDERS										
Taper	Tap Range Hand	Tap Range Pipe	System	L	D	T	C	Code No.	Price \$	
NMTB40	#0-9/16"	1/8"	#1	3.90"	1.25"	0.79"	0.39"	534-500	293.30	
NMTB40	5/16-7/8"	1/4-1/2"	#2	6.16"	2.00"	0.85"	0.49"	534-502	333.20	
NMTB50	#0-9/16"	1/8"	#1	4.50"	1.25"	0.79"	0.39"	534-504	343.10	
NMTB50	5/16-7/8"	1/4-1/2"	#2	7.00"	2.00"	0.85"	0.49"	534-506	448.00	
NMTB50	13/16-1-3/8"	3/4-1"	#3	7.73"	2.87"	0.98"	0.59"	534-508	666.80	

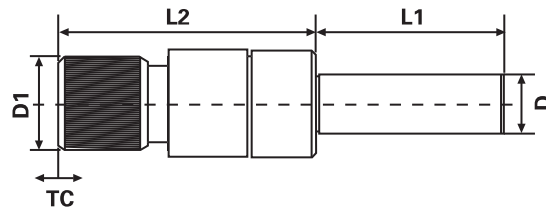
Standard

Tooling

FEATURES OF STRAIGHT SHANK TOOLING

- Straight shank tooling may be used to extend tooling reach for extended length operations
- This option is less costly than extended length integral shank tooling
- They may be used with any size machining center or lathe
- When loaded into larger holders, their reduced O.D. permits tapping applications within large holes or whenever tight clearances are encountered

STRAIGHT SHANK TENSION/COMPRESSION TAP HOLDERS



STRAIGHT SHANK TENSION/COMPRESSION TAP HOLDERS										
Tap Range Hand	Tap Range Pipe	System	Shank Dia. (D)	D1	L1	L2	T	C	Code No.	Price \$
#0-9/16"	1/8"	#1	1"	1.25"	3.50"	4.13"	0.79"	0.39"	534-510	280.00
5/16-7/8"	1/4-1/2"	#2	1"	2.00"	3.50"	5.55"	0.85"	0.49"	534-512	317.50
#0-9/16"	1/8"	#1	1-1/4"	1.25"	4.00"	4.13"	0.79"	0.39"	534-514	280.00
5/16-7/8"	1/4-1/2"	#2	1-1/4"	2.00"	4.00"	5.55"	0.85"	0.49"	534-516	317.50