



CNC Tooling

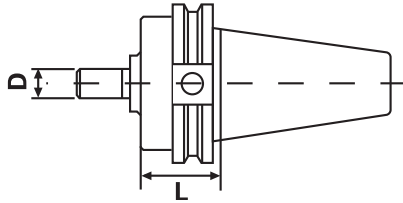
CAT TAPER JACOBS TAPER ADAPTERS

- Shank traverse ground to obtain optimum accuracy
- Meets or exceeds ANSI specifications
- .0002" or better ensures the best possible cutting tool life

Pull Stud



pg 788



■ CAT TAPER JACOBS TAPER ADAPTER

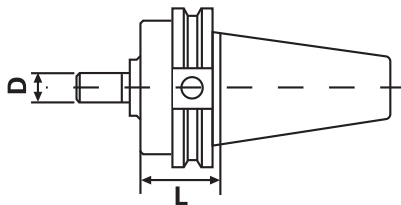
Taper	JT Size	L	D	Code No.	Price \$
CT40	JT#2	1.61"	.560"	531-490	105.10
CT40	JT#3	1.58"	.812"	531-492	105.10
CT40	JT#4	1.49"	1.13"	531-494	105.10
CT40	JT#6	1.61"	.677"	531-496	105.10
CT40	JT#33	1.61"	.625"	531-498	105.10
CT50	JT#2	1.61"	.560"	531-500	138.50
CT50	JT#3	1.58"	.812"	531-502	138.50
CT50	JT#4	1.49"	1.13"	531-504	138.50
CT50	JT#6	1.61"	.677"	531-506	138.50
CT50	JT#33	1.61"	.625"	531-508	138.50

BT TAPER JACOBS TAPER ADAPTERS

Pull Stud



pg 788



■ BT TAPER JACOBS TAPER ADAPTERS

Taper	JT Size	L	D	Code No.	Price \$
BT30	JT#1	1.06"	.385"	532-218	95.20
BT30	JT#2	1.02"	.560"	532-220	99.90
BT30	JT#3	0.98"	.812"	532-222	95.20
BT30	JT#6	1.02"	.677"	532-224	99.90
BT30	JT#33	1.02"	.625"	532-226	99.90
BT40	JT#2	1.61"	.560"	532-230	105.10
BT40	JT#3	1.57"	.812"	532-232	105.10
BT40	JT#6	1.61"	.677"	532-234	105.10
BT40	JT#33	1.61"	.625"	532-236	105.10
BT50	JT#6	1.77"	.677"	532-237	139.50