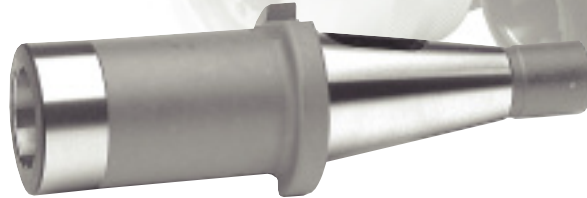
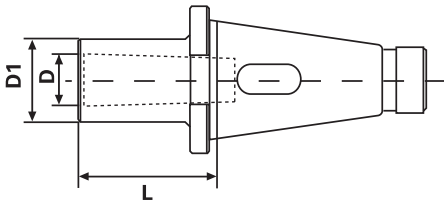


# TAPER ADAPTERS



## Standard Tooling

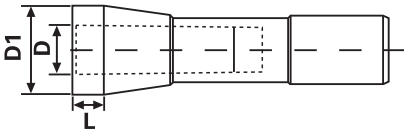
### NMTB MORSE TAPER ADAPTERS



NMTB MORSE TAPER ADAPTERS						
Taper	Size	L	D	D1	Code No.	Price \$
NMTB40	MT#1	0.94"	0.48"	1.00"	534-470	101.90
NMTB40	MT#2	1.75"	0.70"	1.25"	534-472	107.00
NMTB40	MT#3	2.25"	0.94"	1.57"	534-474	107.00
NMTB40	MT#4	3.00"	1.23"	1.97"	534-476	107.00
NMTB50	MT#2	1.88"	0.70"	1.25"	534-478	157.50
NMTB50	MT#3	2.38"	0.94"	1.57"	534-480	162.20
NMTB50	MT#4	3.25"	1.23"	1.97"	534-482	166.80
NMTB50	MT#5	4.63"	1.75"	2.75"	534-484	182.40

## Standard Tooling

### R8 MORSE TAPER ADAPTERS



R8 MORSE TAPER ADAPTERS						
Taper	Size	L	D	D1	Code No.	Price \$
R8	MT#1	0.44"	0.48"	1.00"	534-486	70.70
R8	MT#2	0.44"	0.70"	1.25"	534-488	70.70
R8	MT#3	2.56"	0.94"	1.57"	534-490	77.60