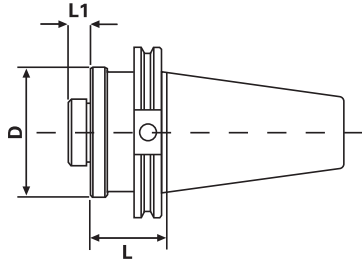



**CT TAPER BORING HEAD HOLDERS**

Pull Stud



pg 788


**CT TAPER BORING HEAD HOLDERS**

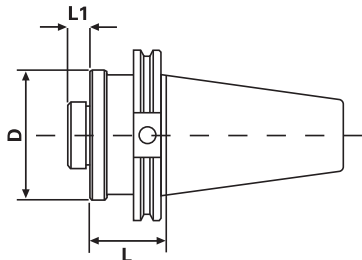
Taper	Thread	L	L1	D	Code No.	Price \$
CT40	7/8" - 20	1.75"	0.44"	1.75"	531-526	<b>87.70</b>
CT40	1-1/2" - 18	1.75"	0.50"	2.96"	531-528	<b>89.40</b>
CT50	7/8" - 20	1.75"	0.44"	1.75"	531-530	<b>131.90</b>
CT50	1-1/2" - 18	1.75"	0.50"	2.96"	531-532	<b>125.70</b>

**BT TAPER BORING HEAD HOLDERS**

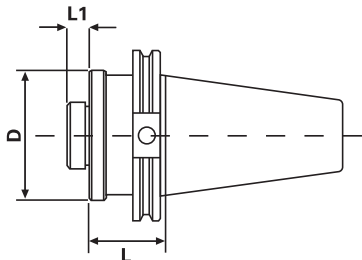
Pull Stud



pg 788


**BT TAPER BORING HEAD HOLDERS**

Taper	Thread	L	L1	D	Code No.	Price \$
BT30	7/8"-20	1.75"	0.44"	1.75"	532-250	<b>91.30</b>
BT30	1-1/2"-18	1.75"	0.50"	2.96"	532-252	<b>83.60</b>
BT40	7/8"-20	1.75"	0.44"	1.75"	532-254	<b>90.00</b>
BT40	1-1/2"-18	1.75"	0.50"	2.96"	532-256	<b>92.30</b>

**NMTB TAPER BORING HEAD HOLDERS**

**NMTB TAPER BORING HEAD HOLDERS**

Taper	Thread	L	L1	D	Code No.	Price \$
NMTB40	7/8"-20	1.75"	0.44"	1.75"	534-492	<b>81.60</b>
NMTB40	1-1/2"-18	1.75"	0.50"	2.96"	534-494	<b>87.80</b>
NMTB50	7/8"-20	1.75"	0.44"	1.75"	534-496	<b>119.60</b>
NMTB50	1-1/2"-18	1.75"	0.50"	2.94"	534-498	<b>126.10</b>