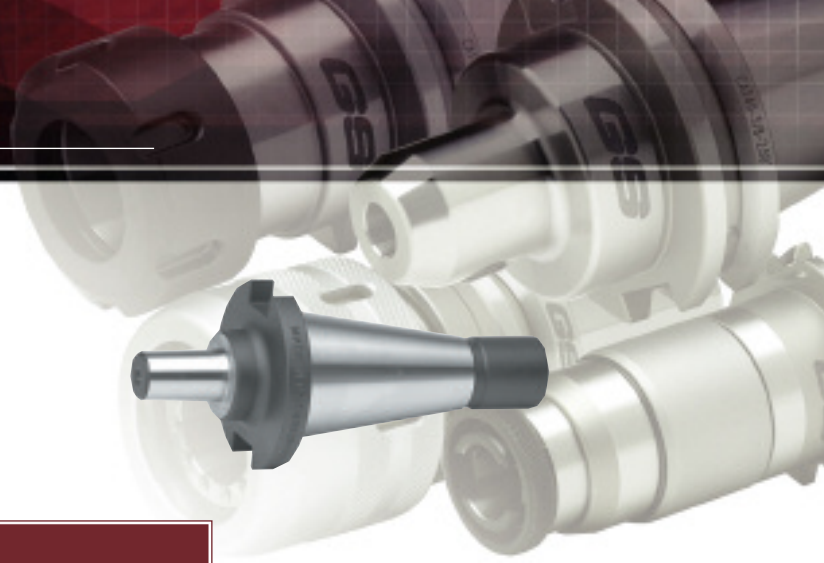


STM DRILL CHUCK ARBORS



NMTB DRILL CHUCK ARBORS



■ NMTB DRILL CHUCK ARBORS

Taper	Size	Draw Bar	Code No.	Price \$
30	JT-2	1/2-13	420-146	71.00
30	JT-3	1/2-13	420-147	103.80
30	JT-33	1/2-13	420-148	103.90
30	JT-6	1/2-13	420-149	103.80
40	JT-2	5/8-11	420-150	118.40
40	JT-3	5/8-11	420-155	124.20
40	JT-33	5/8-11	420-160	118.30
40	JT-6	5/8-11	420-165	124.20
50	JT-3	1-8	420-166	226.30
50	JT-33	1-8	420-167	223.50
50	JT-4	1-8	420-168	130.10
50	JT-5	1-8	420-169	234.00
50	JT-6	1-8	420-171	223.50

R8 DRILL CHUCK ARBORS



■ R8 DRILL CHUCK ARBORS

Taper	Size	Draw Bar	Code No.	Price \$
R-8	JT-1	7/16-20	420-172	49.40
R-8	JT-2	7/16-20	420-173	45.00
R-8	JT-3	7/16-20	420-170	50.80
R-8	JT-6	7/16-20	420-175	49.90
R-8	JT-33	7/16-20	420-176	49.90


NMTB TO MORSE TAPER ADAPTERS


■ NMTB TO MORSE TAPER ADAPTERS					
Outside Taper	Inside Taper	Gauge Length	Draw Bar	Code No.	Price \$
40	MT#2	1.969"	5/8-11	420-105	148.50
40	MT#3	2.559"	5/8-11	420-110	153.70
40	MT#4	3.740"	5/8-11	420-115	169.00
40	MT#5	6.693	5/8-11	420-120	169.40
50	MT#2	0.906	1-8	420-125	154.88
50	MT#3	1.299	1-8	420-130	229.30
50	MT#4	2.087	1-8	420-135	252.30
50	MT#5	3.386	1-8	420-140	165.00

R8 TO MORSE TAPER ADAPTERS


■ R8 TO MORSE TAPER ADAPTERS				
Outside Taper	Inside Taper	Draw Bar	Code No.	Price \$
R-8	MT#2	7/16-20	420-050	86.60
R-8	MT#3	7/16-20	420-055	98.20

NMTB TO MORSE TAPER OPEN END ADAPTERS

■ NMTB TO MORSE TAPER OPEN END ADAPTERS			
Outside Taper	Inside Taper	Code No.	Price \$
40	MT#2	420-005	81.70
40	MT#3	420-010	144.60
40	MT#4	420-015	154.60
50	MT#3	420-020	139.32
50	MT#4	420-025	139.32
50	MT#5	420-030	243.60


NMTB TO NMTB TAPER OPEN END ADAPTERS

■ NMTB TO NMTB TAPER OPEN END ADAPTERS			
Outside Taper	Inside Taper	Code No.	Price \$
40	30	420-035	225.40
50	30	420-040	254.10
50	40	420-045	254.10


NMTB TO R8 TAPER ADAPTERS


■ NMTB TO R8 TAPER ADAPTERS				
Outside Taper	Inside Taper	Draw Bar	Code No.	Price \$
40	R-8	5/8-11	420-060	191.90
50	R-8	1-8	420-065	216.44