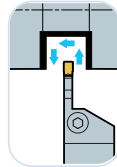
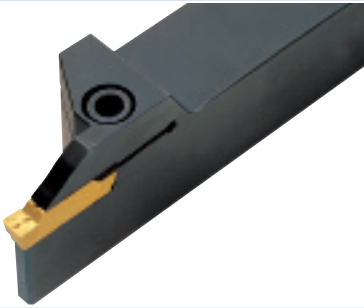
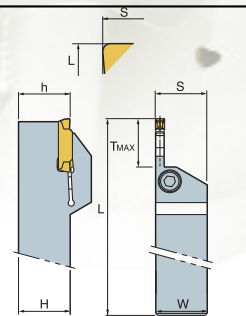




## MGEHR/L



Feed direction

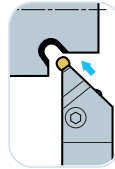
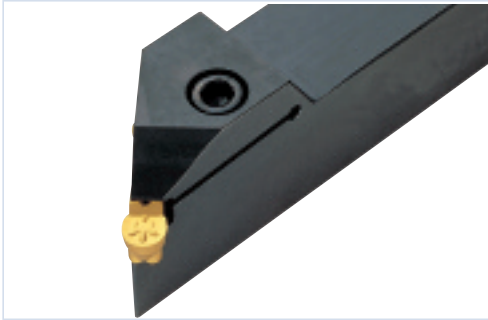


Right-hand shown

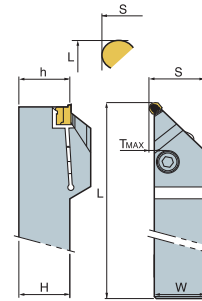
Ref	Holder Style				Application					Inserts	Parts	
Comment					External Grooving, Turning							
					(inch)							
MGEHR/L	Code # Right	Price \$	Code # Left	Price \$	H(h)	W	L	S	TMAX		Screw	Wrench
12-2	148-244	148.50			0.750	0.750	4.921	0.760	0.47	MRGN200-G	BHA0616 146-958 \$6.70	HW 50L 148-186 \$2.40
16-2	148-245	159.80			1.000	1.000	5.906	1.010	0.47			
12-3	148-062	148.50	148-064	148.50	0.750	0.750	4.921	0.764	0.70	MGMN300-M		
12-3-T03	148-063	148.50	148-065	148.50	0.750	0.750	4.921	0.764	0.39			
16-3	148-066	159.80	148-067	159.80	1.000	1.000	5.906	1.014	0.70	MRMN300-M		
16-3-T03	148-068	159.80	148-069	159.80	1.000	1.000	5.906	1.014	0.39			
20-3	148-070	172.70	148-071	172.70	1.250	1.250	6.693	1.264	0.70			
20-3-T03	148-072	172.70	148-073	172.70	1.250	1.250	6.693	1.264	0.39			
12-4					0.750	0.750	4.921	0.766	0.70	MGMN400-M		
12-4-T03					0.750	0.750	4.921	0.766	0.39			
16-4	148-074	159.80	148-075	159.80	1.000	1.000	5.906	1.016	0.70	MRMN400-M		
16-4-T03	148-076	159.80	148-077	159.80	1.000	1.000	5.906	1.016	0.39			
20-4	148-078	172.70	148-079	172.70	1.250	1.250	6.693	1.264	0.70			
20-4-T03	148-082	172.70	148-083	172.70	1.250	1.250	6.693	1.264	0.39			
12-5					0.750	0.750	4.921	0.770	0.90	MGMN500-M		
12-5-T05					0.750	0.750	4.921	0.770	0.59			
16-5	148-080	159.80	148-081	159.80	1.000	1.000	5.906	1.020	0.90			
16-5-T05					1.000	1.000	5.906	1.020	0.59	MRMN500-M		
20-5	148-084	172.70	148-085	172.70	1.250	1.250	6.693	1.270	0.90			
20-5-T05					1.250	1.250	6.693	1.270	0.59			
12-6					0.750	0.750	4.921	0.774	0.90	MGMN600-M		
12-6-T05					0.750	0.750	4.921	0.774	0.59			
16-6	148-086	159.80	148-087	159.80	1.000	1.000	5.906	1.024	0.90			
16-6-T05					1.000	1.000	5.906	1.024	0.59	MRMN600-M		
20-6	148-088	172.70	148-089	172.70	1.250	1.250	6.693	1.274	0.90			
20-6-T05					1.250	1.250	6.693	1.274	0.59			
16-8	148-090	159.80	148-091	159.80	1.000	1.000	5.906	1.043	1.10	MRMN800-M		
16-8-T05					1.000	1.000	5.906	1.043	0.59			
20-8	148-092	172.70	148-093	172.70	1.250	1.250	6.693	1.293	1.10			
20-8-T05					1.250	1.250	6.693	1.293	0.59			

Multi Grooving Holders

### MGEUR/L

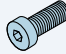
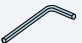
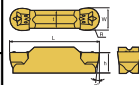


Feed direction



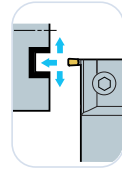
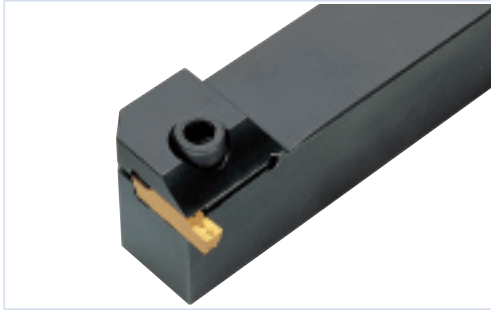
Right-hand shown

Multi Grooving Holders

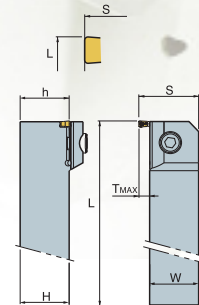
Ref	Holder Style				Application					Inserts	Parts		
Comment					External Relief Grooving								
										(inch)			
MGEUR/L	Code # Right	Price \$	Code # Left	Price \$	H(h)	W	L	S	TMAX		Screw	Wrench	
12-3	148-105	139.30	148-106	139.30	0.750	0.750	4.921	0.967	0.21	MRMN300-M	BHA0616 146-958 \$6.70	HW 50L 148-186 \$2.40	
16-3	148-107	151.00	148-108	151.00	1.000	1.000	5.906	1.217	0.21				
20-3	148-109	162.70	148-110	162.70	1.250	1.250	6.693	1.467	0.21				
12-4	148-111	151.00	148-112	151.00	0.750	0.750	4.921	0.967	0.21	MRMN400-M			
16-4	148-111	151.00	148-112	151.00	1.000	1.000	5.906	1.217	0.21				
20-4	148-113	162.70	148-114	162.70	1.250	1.250	6.693	1.467	0.21				
12-5	148-115	151.00	148-116	151.00	0.750	0.750	4.921	1.026	0.27	MRMN500-M			
16-5	148-115	151.00	148-116	151.00	1.000	1.000	5.906	1.276	0.27				
20-5	148-117	162.70	148-118	162.70	1.250	1.250	6.693	1.526	0.27				
12-6	148-119	151.00	148-120	151.00	0.750	0.750	4.921	1.222	0.27	MRMN600-M			
16-6	148-119	151.00	148-120	151.00	1.000	1.000	5.906	1.276	0.27				
20-6	148-121	162.70	148-122	162.70	1.250	1.250	6.693	1.526	0.27				
16-8	148-123	151.00	148-124	151.00	1.000	1.000	5.906	1.354	0.35	MRMN800-M			
20-8	148-125	162.70	148-126	162.70	1.250	1.250	6.693	1.604	0.35				
16-6A	148-127	151.00	148-128	151.00	1.000	1.000	5.906	1.276	0.27	MRGN600-A			
20-6A					1.250	1.250	6.693	1.526	0.27				
16-8A	148-129	151.00	148-130	151.00	1.000	1.000	5.906	1.354	0.35	MRGN800-A			
20-8A					1.250	1.250	6.693	1.604	0.35				



## MGEVR/L



Feed direction

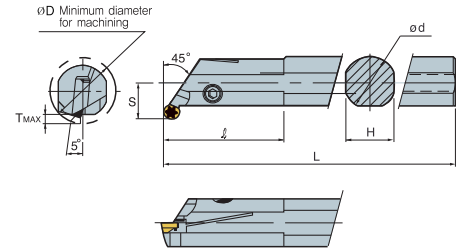
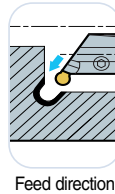


Right-hand shown

Ref	Holder Style		Application							Inserts	Parts	
Comment			Facial Grooving , Turning									
										(inch)		
MGEVR/L	Code # Right	Price \$	Code # Left	Price \$	H(h)	W	L	S	TMAX		Screw	Wrench
12-2	148-266	139.30	148-267	139.70	0.750	0.750	4.9921	0.868	0.11	MGMN200-G		
16-2	148-268	151.00	148-269	151.00	1.000	1.000	5.906	1.118	0.11			
12-3	148-270	139.30	148-271	139.30	0.750	0.750	4.921	0.967	0.21	MGMN300-M	BHA0616	HW 50L
16-3	148-272	151.00	148-273	151.00	1.000	1.000	5.906	1.217	0.21		146-958	148-186
20-3	148-274	162.70	148-275	162.70	1.250	1.250	6.693	1.467	0.21	MRMN300-M	\$6.70	\$2.40

Multi Grooving Holders

### MGIUR/L



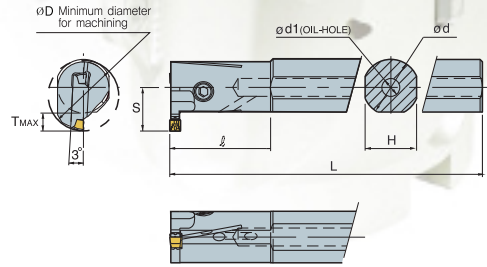
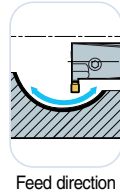
Right-hand shown

M.T.G. Holders & Boring Bars

Ref	Holder Style		Application									Inserts	Parts	
Comment			Internal Relief Grooving											
MGIUR/L	Code #		Code #		øD	ød	L	ℓ	TMAX	H	S		Screw	Wrench
	Right	Price \$	Left	Price \$										
2312-3	148-131	138.80	148-132	138.80	1.437	0.750	5.906	1.772	0.13	0.670	0.512	MRMN300-M	MHA0512 147-984 \$8.20	HW 40L 148-290 \$2.40
2616-3	148-133	156.70	148-134	156.70	1.625	1.000	7.874	1.772	0.13	0.920	0.610	MRMN300-M		
3220-3	148-135	185.80	148-136	185.80	2.000	1.250	9.843	2.559	0.13	1.170	0.748	MRMN300-M		
2312-4	148-137	156.70	148-138	156.70	1.437	0.750	5.906	1.772	0.13	0.670	0.512	MRMN400-M		
2616-4	148-139	185.80	148-140	185.80	1.625	1.000	7.874	1.772	0.13	0.920	0.610	MRMN400-M		
3220-4	148-139	185.80	148-140	185.80	2.000	1.250	9.843	2.559	0.13	1.170	0.748	MRMN400-M		
2616-5	148-141	156.40	148-142	156.40	1.625	1.000	7.874	1.772	0.13	0.920	0.610	MRMN500-M		
3220-5	148-143	188.70	148-144	188.70	2.000	1.250	7.874	1.772	0.13	1.170	0.748	MRMN500-M		
2616-6	148-145	188.70	148-146	188.70	1.625	1.000	9.843	2.559	0.13	0.920	0.748	MRMN600-M		
3220-6	148-145	188.70	148-146	188.70	2.000	1.250	9.843	2.559	0.13	1.170	0.748	MRMN600-M		
2616-8	148-147	244.00	148-148	244.00	1.625	1.000	7.874	1.772	0.13	0.920	0.610	MRMN800-M		
3220-8	148-147	244.00	148-148	244.00	2.000	1.250	9.843	2.559	0.25	1.170	0.748	MRMN800-M		
2616-6A	148-149	188.70	148-150	188.70	1.625	1.000	7.874	1.772	0.25	0.920	0.610	MRGN600-A		
3220-6A	148-149	188.70	148-150	188.70	2.000	1.250	9.843	2.559	0.13	1.170	0.748	MRGN600-A		
2616-8A	148-151	244.00	148-152	244.00	1.625	1.000	7.874	1.772	0.25	0.920	0.728	MRGN800-A		
3220-8A	148-151	244.00	148-152	244.00	2.000	1.250	9.843	2.559	0.25	1.170	0.866	MRGN800-A		



## MGIVR/L



Right-hand shown

Ref	Holder Style				Application								Inserts	Parts	
Comment					Internal Grooving, Turning										
					(inch)										
MGIVR/L	Code # Right	Price \$	Code # Left	Price \$	$\phi D$	$\phi d$	L	I	TMAX	$\phi d_1$	H	S		Screw	Wrench
1210-2	148-233	151.80			0.750	0.625	4.921	1.378	1.90	0.236	0.630	0.476	MGMN200-G		
1612-2	148-234	178.40			1.000	0.750	5.906	1.772	1.90	0.315	0.630	0.585			
1612-3	148-235	178.40			1.000	0.750	5.906	1.772	0.25	0.236	0.670	0.614	MGMN300-M		
2016-3	148-236	207.80	148-237	207.80	1.250	1.000	7.874	1.772	0.25	0.315	0.920	0.744		MHA0512	HW 40L
2420-3	148-238	244.40			1.500	1.250	9.843	2.559	0.25	0.315	1.170	0.846		147-984	148-290
														\$8.20	\$2.40
1612-4	148-239	178.40			1.000	0.750	5.906	1.772	0.25	0.315	0.670	0.614	MGMN400-M		
2016-4	148-240	207.80	148-241	207.80	1.250	1.000	7.874	1.772	0.25	0.315	0.920	0.744			
2420-4	148-242	244.40			1.500	1.250	9.843	2.559	0.25	0.315	1.170	0.846			

M.T.G. Holders & Boring Bars