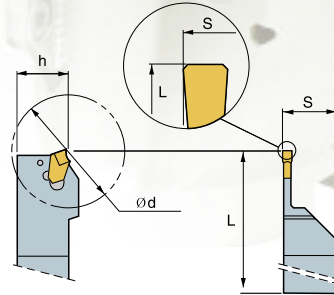
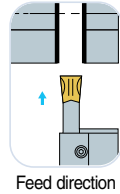
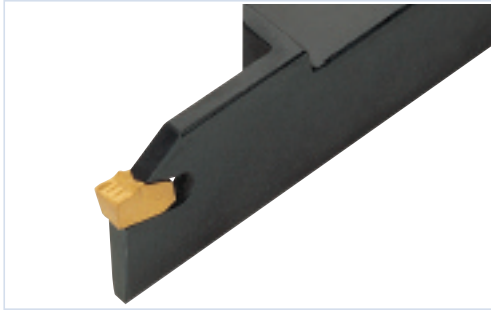


INTEGRAL SHANK HOLDER



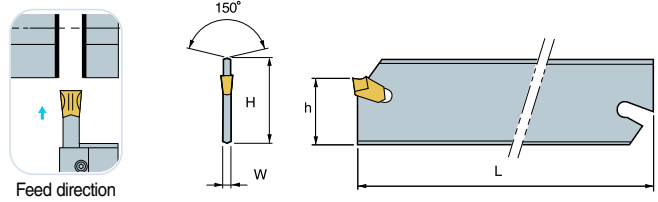
PRO Part-off Integral Shank Holder



Ref	Holder Style		Application					Inserts	Parts
Comment			Parting off						
			(inch)						
PP-INT	Code #	Price \$	h	w	L	ød	S		Wrench
062-3			0.625	0.625	3.937	1.260	0.625	SP300, 300R/L	SW 50L 146-960 \$2.30
075-3	147-433	131.40	0.750	0.750	4.724	1.575	0.750	SP400, 400R/L	
075-4			0.750	0.750	4.724	1.969	0.750	SP400, 400R/L	
075-5			0.750	0.750	4.724	2.362	0.750	SP500, 500R/L	
100-3	148-231	131.40	1.000	1.000	5.906	1.969	1.000	SP300, 300R/L	
100-4	148-232	131.40	1.000	1.000	5.906	2.362	1.000	SP400, 400R/L	
100-5			1.000	1.000	5.906	2.756	1.000	SP500, 500R/L	

Part off Inserts & Holders

PRO Part-off Blade

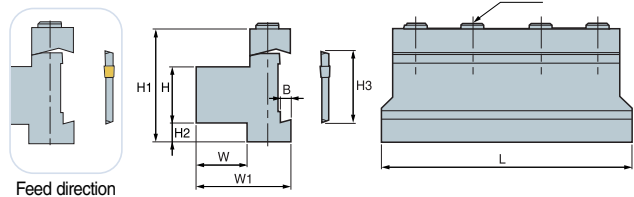


Part off Blades & Blocks

Ref	Holder Style	Application						Inserts	Parts
Comment		Parting off							+Purchase separately Wrench
		(inch)							
PP-B	Code #	Price \$	H	W	L	h			
226S	146-532	134.80	1.023	0.063	4.331	0.827	SP200, 200R/L	SW 15S 146-771 \$21.90	
326S	146-232	138.10	1.023	0.094	4.331	0.827	SP300, 300R/L		
232S	146-717	134.80	1.259	0.063	5.906	0.984	SP200, 200R/L		
332S	146-898	134.80	1.259	0.094	5.906	0.984	SP300, 300R/L		
432S	146-899	134.80	1.259	0.126	5.906	0.984	SP400, 400R/L		
532S	146-962	134.80	1.259	0.157	5.906	0.984	SP500, 500R/L		
632S	148-538	134.80	1.259	0.205	5.906	0.984	SP600, 600R/L		

P. 444

P.O.B. (Block for Part-off blades)



Right-hand shown

Ref	Holder Style	Application										Blades	Parts
Comment		Saw-Man Blade Block											Wrench
		(inch)											
P.O.B.	Code #	Price \$	H(h)	W	H3	L	H01	H02	W1	B	M		
19-5	146-510	154.90	0.750	0.750	1.023	3.50	2.10	0.354	1.375	0.209	3-M6	SPB 226 & 326	SW 50L 146-960 \$2.30
25;4-6	145-895	161.90	1.000	0.875	1.259	4.50	2.125	0.157	1.500	0.209	4-M6	SPB 232 - 532	

P. 446