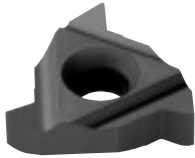
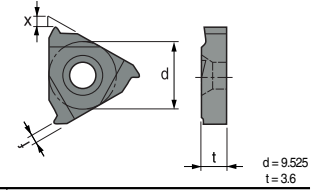


ECTR



- USE
- Recommendation
- Geometry



External Threading Inserts

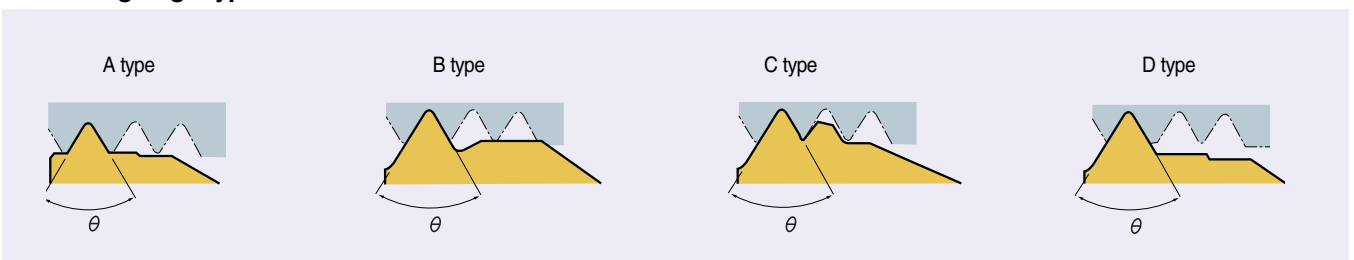
Applicable holder	Designation	ISO	Coated Carbide				Cermet	Uncoated Carbide			(inch)					
			PT10C	PT30C	PM30C	PM30P		PT10S	PTM30U	KTM10U	Pitch	f	θ	x	Cutting edge type	
ETH3-...	ECTR 28UN					146-512 \$33.90			147-767 \$26.60		28	0.039		0.051	B	
						146-511 \$33.90					24	0.039		0.051	B	
	20UN					146-524 \$33.90					20	0.039		0.051	A	
						146-521 \$33.90					18	0.039		0.051	A	
	16UN					146-489 \$33.90					16	0.039		0.051	A	
						146-488 \$33.90					14	0.047		0.051	A	
	14UN					146-250 \$33.90					12	0.047	60°	0.051	A	
						146-249 \$33.90					11	0.047		0.051	A	
	11UN										10	0.059		0.059	A	
											10UN	09		0.059	0.059	A
	09UN										08	0.059		0.059	A	
											08UN	28~08		0.039	0.051	D
	300 8-28					146-248 \$33.90										
						146-597 \$33.90										
	ECTR 28W											20	0.039		0.051	A
												19	0.039		0.051	A
16												0.039	0.051		A	
16W												14	0.047		0.051	A
14W											12	0.047	55°	0.059	A	
											12W	11		0.059	0.059	A
11W											10	0.059		0.059	A	
											10W	09		0.059	0.059	A

P. 456

Quick Choice Grade Selection



■ Cutting edge type

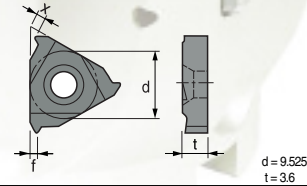




ICTR Standard Type



- USE
- Recommendation
- Geometry



Applicable holder	Designation	ISO	Coated Carbide				Cermet	Uncoated Carbide			(inch)				
			PT10C	PT30C	PM30P	MT30C		PT10S	PTM30U	KTM10U	Pitch	f	θ	x	Cutting edge type
ITH3- - -	ICTR 28UN				146-518 \$33.90			147-768 \$26.60		28	0.039		0.051	B	
					146-517 \$33.90				24	0.039		0.051	B		
				146-516 \$33.90					20	0.039		0.051	A		
				146-515 \$33.90					18	0.039		0.051	A		
				146-514 \$33.90					16	0.039		0.051	A		
				146-513 \$33.90					14	0.039		0.051	A		
				146-253 \$33.90					12	0.047	60°	0.051	A		
				146-252 \$33.90					11	0.047		0.051	A		
									10	0.059		0.059	A		
									09	0.059		0.059	A		
									08	0.059		0.059	A		
									146-611 \$26.60	28~08	0.059		0.059	D	
										14~08	0.059		0.059	D	
										28	0.039		0.051	B	
										20	0.039		0.051	A	
										19	0.039		0.051	A	
										16	0.039		0.051	A	
										14	0.047		0.051	A	
										12	0.047	60°	0.051	A	
										11	0.059		0.059	A	
										10	0.059		0.059	A	
										09	0.059		0.059	A	
										08	0.059		0.059	A	
									28~14	0.039		0.051	D		
									14~08	0.059		0.059	D		

Internal Threading Inserts

P. 456

Quick Choice Grade Selection

P Steel	M Stainless Steel	K Cast Iron-Alum
-------------------	-----------------------------	----------------------------

■ Cutting edge type

