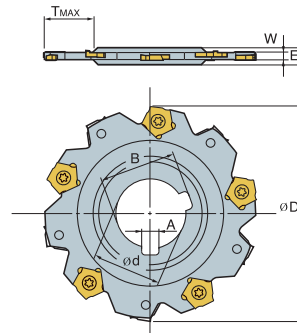
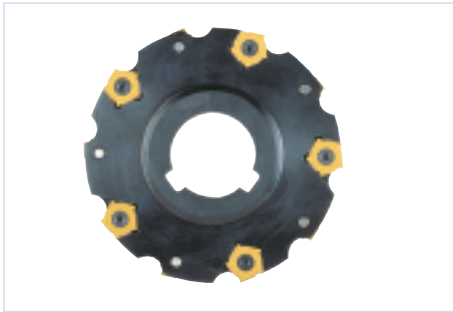


## SMC

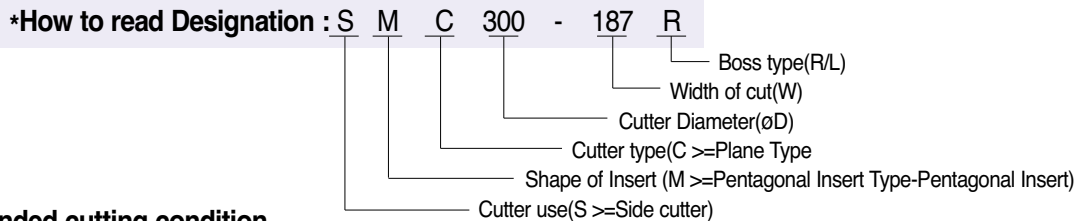


(Inch)

Side Milling Cutters

Designation	Stock	øD	W	D <sub>1</sub>	ød	A	B	E		Available Inserts	Available Screw
SMC 300-187		3.000	0.187	0.686	1.000	0.250	1.104	0.312	8	PNEJ1223N	PTMA0403F
300-218		3.000	0.218	0.702	1.000	0.250	1.104	0.312	8	PNEJ1230N	PTMA0404F
300-250		3.000	0.250	0.718	1.000	0.250	1.104	0.312	8	PNEJ1235N	PTMA0405F
400-187		4.000	0.187	0.938	1.250	0.313	1.385	0.312	10	PNEJ1223N	PTMA0403F
400-218		4.000	0.218	0.953	1.250	0.313	1.385	0.312	10	PNEJ1230N	PTMA0404F
400-250		4.000	0.250	0.969	1.250	0.313	1.385	0.312	10	PNEJ1235N	PTMA0405F
400-312		4.000	0.312	1.000	1.250	0.313	1.385	0.312	10	PNEJ1245N	PTKA0407F
400-375		4.000	0.375	0.938	1.250	0.313	1.385	0.500	10	PNEJ1250N	PTKA0408F
400-437		4.000	0.437	0.969	1.250	0.313	1.385	0.500	10	PNEJ1255N	PTKA0409F
500-187		5.000	0.187	1.188	1.500	0.375	1.666	0.312	12	PNEJ1223N	PTMA0403F
500-218		5.000	0.218	1.203	1.500	0.375	1.666	0.312	12	PNEJ1230N	PTMA0404F
500-250		5.000	0.250	1.219	1.500	0.375	1.666	0.312	12	PNEJ1235N	PTMA0405F
500-312		5.000	0.312	1.250	1.500	0.375	1.666	0.312	12	PNEJ1245N	PTKA0407F
500-375		5.000	0.375	1.188	1.500	0.375	1.666	0.500	12	PNEJ1250N	PTKA0408F
500-437		5.000	0.437	1.203	1.500	0.375	1.666	0.500	12	PNEJ1255N	PTKA0409F
600-187		6.000	0.187	1.219	1.500	0.375	1.666	0.312	16	PNEJ1223N	PTMA0403F
600-218		6.000	0.218	1.250	1.500	0.375	1.666	0.312	16	PNEJ1230N	PTMA0404F
600-250		6.000	0.250	1.188	1.500	0.375	1.666	0.312	16	PNEJ1235N	PTMA0405F
600-312		6.000	0.312	1.219	1.500	0.375	1.666	0.312	16	PNEJ1245N	PTKA0407F
600-375		6.000	0.375	1.688	1.500	0.375	1.666	0.500	16	PNEJ1250N	PTKA0408F
600-437		6.000	0.437	1.719	1.500	0.375	1.666	0.500	16	PNEJ1255N	PTKA0409F
600-500		6.000	0.500	1.750	1.500	0.375	1.666	0.500	16	PNEJ1265N	PTKA0411F
600-562		6.000	0.562	1.719	1.500	0.375	1.666	0.625	16	PNEJ1275N	PTKA0413F
800-250		8.000	0.250	2.385	2.000	0.500	2.198	0.312	18	PNEJ1235N	PTMA 0405F
800-312		8.000	0.312	2.416	2.000	0.500	2.198	0.312	18	PNEJ1245N	PTKA0407F
800-375		8.000	0.375	2.353	2.000	0.500	2.198	0.500	18	PNEJ1250N	PTKA0408F
800-437		8.000	0.437	2.384	2.000	0.500	2.198	0.500	18	PNEJ1255N	PTKA0409F
800-500		8.000	0.500	2.416	2.000	0.500	2.198	0.500	18	PNEJ1265N	PTKA0411F
800-562		8.000	0.562	2.384	2.000	0.500	2.198	0.500	18	PNEJ1275N	PTKA0413F

## Non-Stock Standard



### Recommended cutting condition

Work piece	Cutting Condition		Grade
	V(sfm)	f(ipt)	
P	490~980	.003~.008	Coated (PM25C PM30C)
M			
K			

M & K Class grades available, none are stock standard

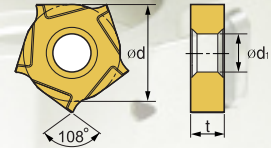
# SLOTING MILLING INSERTS



## PNEJ



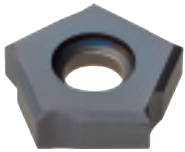
- USE
- Geometry
- Recommendation



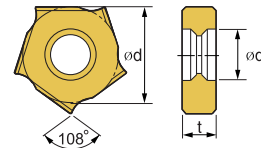
Applicable holder	Designation	ISO	Coated Carbide					Cermet		Uncoated Carbide KTM10U	(inch)			
			PM25C	PM30C	PM30P	MT30P	PM10P	PT10S	PT20S		ød	ødi	t	Available Cutter thickness
SMC- ----	PNEJ	1223N									1/2	0.197	0.091	0.157
		1225N											0.098	0.177
		1230N									1/2	0.197	0.118	0.197
		1235N											0.138	0.236
		1240N									1/2	0.197	0.157	0.276
		1245N											0.177	0.315
		1250N									1/2	0.197	0.197	0.354
		1255N											0.217	0.394
		1260N									1/2	0.197	0.236	0.433
		1265N											0.256	0.472
		1270N									1/2	0.197	0.276	0.512
		1275N											0.295	0.551
1285N									1/2	0.197	0.335	0.630		

P. 516

## PNEJ-C



- USE
- Geometry
- Recommendation



Applicable holder	Designation	ISO	Coated Carbide					Cermet		Uncoated Carbide KTM10U	(inch)			
			PM25C	PM30C	PM30P	MT30P	PM10P	PT10S	PT20S		ød	ødi	t	Available Cutter thickness
SMC- ----	PNEJ	1223N-C03									1/2	0.197	0.091	0.157
		1230N-C03											0.118	0.197
		1235N-C03											0.138	0.236
		1240N-C05									1/2	0.197	0.157	0.276
		1245N-C05											0.177	0.315
		1250N-C05									1/2	0.197	0.197	0.354
		1255N-C05											0.217	0.394
		1260N-C05									1/2	0.197	0.236	0.433
		1265N-C05											0.256	0.472
		1270N-C05									1/2	0.197	0.276	0.512
		1275N-C05											0.295	0.551

P. 516

Side Milling Inserts

Quick Choice Grade Selection

