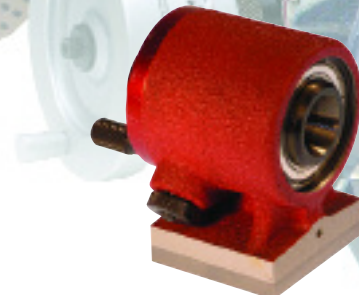


INDEXING FIXTURES



COLLET MASTER INDEX FIXTURE

- 48 index positions, every 7-1/2 degrees.
- Uses all standard 5C collets.
- Two sealed, pre-loaded ball bearings in spindle.
- Hardened & Ground base held square and parallel to spindle within 0.0002".
- Maximum spindle runout is 0.0001".
- Drawbar and fitted wooden case included.
- Optional faceplate & v-block available for eccentric forms.



COLLET MASTER INDEX FIXTURE						
Model No.	Centre Height	Overall Length	Indexing Accuracy	Weight (lb)	Code No.	Price \$
CM-5C	3-5/8"	6-1/2"	+/-45 Sec.	9 lb	251-550	1,633.00

COLLET MASTER INDEX FIXTURE					
Model No.	Faceplate Diameter	V-block Capacity	Weight	Code No.	Price \$
CM-5C-FVB	6-1/2"	1-3/8"	15 lbs	251-552	769.80



MINI-MASTER INDEX FIXTURE

- 72 position index plate allows an index every 5 degrees.
- Light weight for easy handling.
- Uses standard ER-25 spring collets.
- Spindle runout 0.0002" T.I.R.
- 3" height is ideal for small machine set-ups.
- Hardened steel base is ground square and parallel with spindle axis within 0.0002".
- Fitted wooden case included.



MINI-MASTER INDEX FIXTURE						
Model No.	Centre Height	Collet Capacity	Through Hole	Weight	Code No.	Price \$
MM-25-R	1-7/8"	All ER-25	5/8"	4 lbs	251-566	1,221.10



SPIN-MASTER INDEX FIXTURE

- Uses standard 5C collets.
- 2-5/16" spindle travel for flute grinding.
- Runout on hardened and ground spindle is 0.0005" T.I.R.
- 3-7/8" x 4-5/32" base ground parallel to spindle.
- Sides of base ground parallel to spindle axis.
- Index plate with 36 holes for direct indexing in 10° steps & is graduated in 5° increments. 10 vernier holes provide 1° indexing.



SPIN-MASTER INDEX FIXTURE						
Model No.	Centre Height	Collet Capacity	Through Hole	Weight	Code No.	Price \$
SM-5C	2-3/4"	All 5C	1-1/4"	15 lbs	251-564	1,096.40