

# COLLET CHUCK, RADIUS & ANGLE DRESSER



## 5C COLLET CHUCK FOR MOUNTING WITH ADAPTER PLATE

This type 1510 COLLET CHUCK is designed for use with 5C collets. It can be used for turning, facing, boring, grinding and milling operations on centre lathes and grinding machines.

The simple key operated scroll provides a uniform, distortion free clamping of workpieces and low collet exchange times. Their simple design, rugged construction and fine workmanship assures high quality and long service life. Adapter plates Type 8211 and 8244 as well as 5C adjustable collet stop for the Type 1510 Collet Chuck are available.



### 5C Collet Chuck

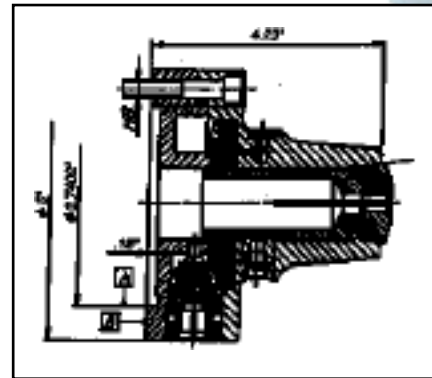
#### 5C COLLET CHUCK

Chuck Size (in)	5C Collet Holding Capacity (in)	Weight (lbs)	Code No.	Price \$
5	1/16 - 1-1/8	13.0	425-400	833.10

### Adapters for 5C Collet Chuck

#### ADAPTERS FOR 5C COLLET CHUCK

Chuck Size (in)	Spindle	Adapter Code No.	Price \$
5	A6	425-410	258.00
	A8	425-415	262.80
5	D3	425-420	169.20
	D5	425-425	196.89



### 5C Collet Stop

- Fit any 5C ID threaded collets
- They are hardened and oxidized

#### 5C COLLET STOP

Descriptions	Code No.	Price \$
5C adjustable collet stops	425-430	24.10

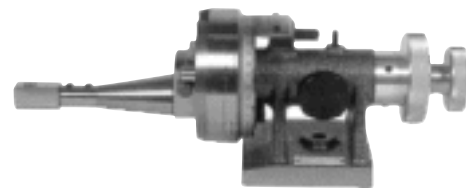


**QUALITY  
IMPORT**

## RADIUS AND ANGLE DRESSER

### Low Profile Radius and Angle Dresser

An extremely accurate and versatile unit which may be used on all OD, ID and surface grinding operations. Knob "A" controls radius dressing and Knob "B" controls angle dressing. At no time are the hands near the point of contact. All moving parts are lapped and the unit has adjustable gibs for take of future wear.



#### RADIUS AND ANGLE DRESSER

Model No.	C1-330
Max. Dia. of Wheel	10"
Convex Radii	0 - 1-5/8"
Concave Radii	0 - 4"
Tangent Travel	1.20"
Either side of Centre	
Centre line of tool	3.4"
Overall length	16.61"
Weight	27 lbs.
Code No.	326-106
Price \$	701.20

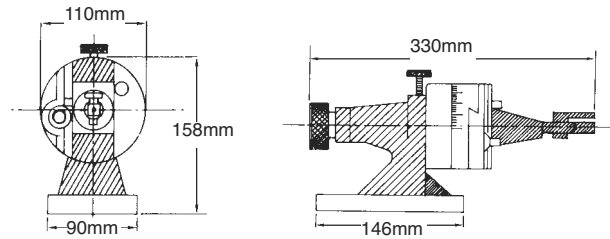
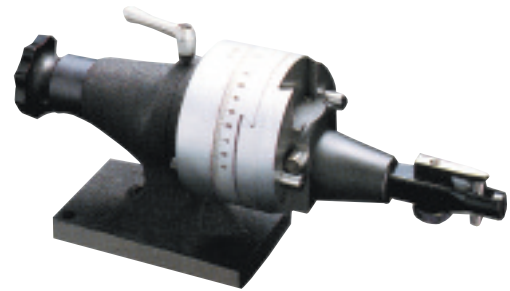


### V-TDB RADIUS AND ANGLE DRESSER

- Positive setting of the diamond to absolute centre with the special gauge included with the dresser.
- 4 x 90° graduation in full 360° circle. 6 minute vernier reading.
- chrome plated
- One push-pull type knob for radius and angle control and for safer and faster operations.
- Net weight: 10.5 kg

Specifications	
Convex dressing range	0.8R-40R
Concave dressing range	0-40R
Max. wheel dressing diameter	250mm
Max. wheel extending diameter	375mm

V-TDB RADIUS DRESSER		
Model No.	Code No.	Price \$
V-TDB	326-570	970.30

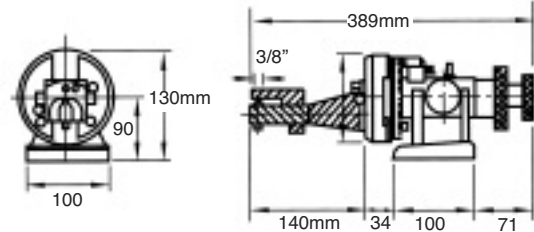
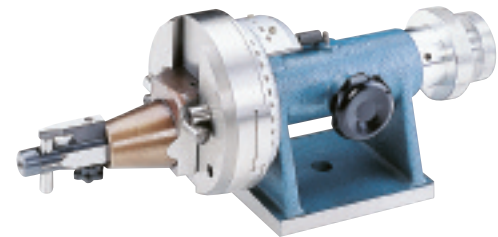


### V-TDG RADIUS AND ANGLE DRESSER

- 6 minute vernier reading.
- Dual purpose knob for drum and angle movement.
- Stop for concave and convex radii.
- Comes with setting gauge for diamond tool.

Specifications	
Max. wheel diameter, standard	11"
Concave radius with standard diamonds	0-2 1/4"
Concave radius with rat-tail diamonds	0-2 1/4"
Concave radius	0-4"
Tangent travel in either direction	1.950"
Centre line	3.4"

V-TDG RADIUS DRESSER		
Model No.	Code No.	Price \$
V-TDG	326-572	1,243.80



### RADIUS AND ANGLE DRESSER

- Extremely Accurate & Versatile
  - Useable on all OD / ID surface grinding operations.
  - Independent or Simultaneous Radii & Angular operation
  - Adjustable gibs
  - All moving parts are lapped
- Gage block setting for precise radii  
• Knob A controls Radi & Knob B controls angular movements

Specifications	Model 550-000	Model 550-001N
Weight lbs/(kg)	16 (7.2)	23 (10.4)
Maximum diameter of wheel	8"	12"
Convex radii	0-1 3/16"	0-1 5/8" (6"*)
Concave radii	1/32"-1 3/16"	1/32"-1 5/8"*** (6"*)
Tangent travel either side of centre	1.20"	2"
Centre line of tool	3"	3.4"
Overall length	13.66"	16.61"

YUASA RADIUS DRESSERS		
Model No.	Code No.	Price \$
550-000	325-600	3,659.20
550-001N	325-605	3,456.00
**553-308	325-607	891.20



Specifications	Maximum Variation
Face plate to dresser arm squareness (per 2")	0.0005 (0.012)
Face plate to base squareness	0.0006 (0.015)
Centre runout of dovetail groove to wheel center	0.0006 (0.015)

### Optional accessories for 550-001N

- 553-308 - Extension adapter for 1-5/8" to 6" concave radii and convex radii