

# COLLET CHUCK, RADIUS & ANGLE DRESSER



## 5C COLLET CHUCK FOR MOUNTING WITH ADAPTER PLATE

This type 1510 COLLET CHUCK is designed for use with 5C collets. It can be used for turning, facing, boring, grinding and milling operations on centre lathes and grinding machines.

The simple key operated scroll provides a uniform, distortion free clamping of workpieces and low collet exchange times. Their simple design, rugged construction and fine workmanship assures high quality and long service life. Adapter plates Type 8211 and 8244 as well as 5C adjustable collet stop for the Type 1510 Collet Chuck are available.



### 5C Collet Chuck

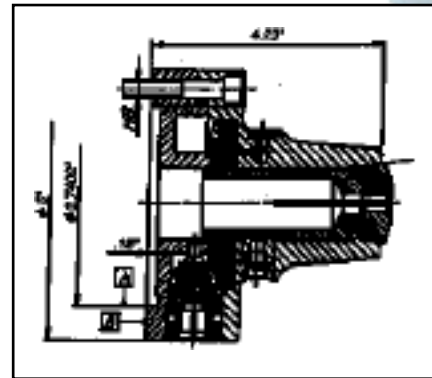
#### 5C COLLET CHUCK

Chuck Size (in)	5C Collet Holding Capacity (in)	Weight (lbs)	Code No.	Price \$
5	1/16 - 1-1/8	13.0	425-400	833.10

### Adapters for 5C Collet Chuck

#### ADAPTERS FOR 5C COLLET CHUCK

Chuck Size (in)	Spindle	Adapter Code No.	Price \$
5	A6	425-410	258.00
	A8	425-415	262.80
5	D3	425-420	169.20
	D5	425-425	196.89



### 5C Collet Stop

- Fit any 5C ID threaded collets
- They are hardened and oxidized

#### 5C COLLET STOP

Descriptions	Code No.	Price \$
5C adjustable collet stops	425-430	24.10

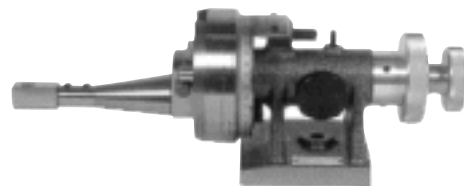


**QUALITY  
IMPORT**

## RADIUS AND ANGLE DRESSER

### Low Profile Radius and Angle Dresser

An extremely accurate and versatile unit which may be used on all OD, ID and surface grinding operations. Knob "A" controls radius dressing and Knob "B" controls angle dressing. At no time are the hands near the point of contact. All moving parts are lapped and the unit has adjustable gibs for take of future wear.



#### RADIUS AND ANGLE DRESSER

Model No.	C1-330
Max. Dia. of Wheel	10"
Convex Radii	0 - 1-5/8"
Concave Radii	0 - 4"
Tangent Travel	1.20"
Either side of Centre	
Centre line of tool	3.4"
Overall length	16.61"
Weight	27 lbs.
Code No.	326-106
Price \$	701.20