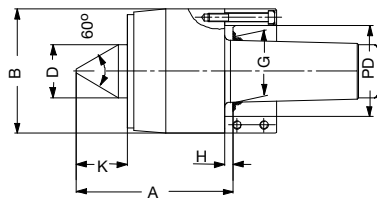



REVOLVING TAILSTOCK CENTRE
Features

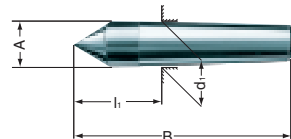
- For heavy duty machining


REVOLVING TAILSTOCK CENTRES FOR HEAVY DUTY MACHINING 60°

Size	Rohm Id No.	Max Workpiece Weight kg.	Max Concentricity error (mm)	B (mm)	D (mm)	G (mm)	H (mm)	A (mm)	K (mm)	PD Max (mm)	Code No.	Price \$
MK 6	466239	10000	0.01	230	85	63.348	13	254	86	170	393-053	18,730.60
MK 7	466240	15000	0.01	240	95	83.061	15	270	92	180	393-054	20,897.60
Metr.80 (1:20)	466241	15000	0.01	240	95	80	13	269	92	180	393-056	23,405.60
Metr.100 (1:20)	466242	20000	0.01	260	108	100	14	298	102	200	393-057	32,667.90
No..80 (1:10)	466243	15000	0.01	240	95	80	13	269	92	180	393-058	23,405.60
No..100 (1:10)	466244	20000	0.01	260	108	100	14	298	102	200	393-059	32,667.90

TYPE 665 DEAD CENTRE
Features

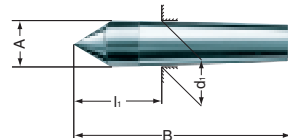
- Full Point
- Completely hardened and ground
- Material: Tool steel


DEAD CENTRES TYPE 665

Morse Taper	Rohm Id No.	A (mm)	B (mm)	d1 (mm)	l1 (mm)	Code No.	Price \$
0	013706	9.2	70	9.045	20	394-045	45.60
1	013707	12.2	80	12.065	26.5	394-050	35.30
2	013709	18	100	17.780	36	394-055	45.00
3	013711	24.1	125	23.825	44	394-060	56.70
4	013712	31.6	160	31.267	57.5	394-065	94.10
5	013715	44.7	200	44.399	70.5	394-070	179.10
6	013718	63.8	270	63.348	88	394-075	427.90

TYPE 666 DEAD CENTRE
Features

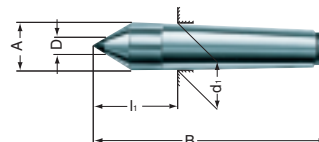
- Full Point
- Completely hardened and ground
- Material: SS-high speed steel


DEAD CENTRES TYPE 666

Morse Taper	Rohm Id No.	A (mm)	B (mm)	d1 (mm)	l1 (mm)	Code No.	Price \$
0	013790	9.2	70	9.045	20	394-080	76.30
1	013791	12.2	80	12.065	26.5	394-085	83.50
2	013792	18	100	17.780	36	394-090	122.40
3	013793	24.1	125	23.825	44	394-095	176.60
4	013794	31.6	160	31.267	57.5	394-100	197.40
5	013797	44.7	200	44.399	70.5	394-105	376.60
6	013799	63.8	270	63.348	88	394-110	771.30

TYPE 667 DEAD CENTRE
Features

- Full Point , Carbide tipped
- Completely hardened and ground


DEAD CENTRES TYPE 667

Morse Taper	Rohm Id No.	A (mm)	B (mm)	D (mm)	d1 (mm)	l1 (mm)	Code No.	Price \$
0	017169	9.2	70	5	9.045	20	394-115	133.60
1	017170	12.2	80	7	12.065	26.5	394-120	138.10
2	017170	18	100	7	17.780	36	394-125	163.10
3	017172	24.1	125	11	23.825	44	394-130	220.00
4	017173	31.6	160	14	31.267	57.5	394-135	297.10
5	017174	44.7	200	18	44.399	70.5	394-140	521.20
6	017175	63.8	270	18	63.348	88	394-145	735.10

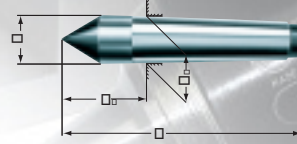
ROHM DEAD CENTRES



TYPE 677 DEAD CENTRE

Features

- Full Point , Carbide tipped
- Completely hardened and ground



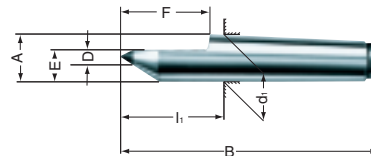
DEAD CENTRES TYPE 677

Morse Taper	Rohm Id No.	A (mm)	B (mm)	d1 (mm)	l1 (mm)	Code No.	Price \$
2	326786	18	100	17.780	36	394-150	427.90
3	306402	24.1	125	23.825	44	394-155	599.60
4	221398	31.6	160	31.267	57.5	394-160	1,087.50
5	326816	44.7	200	44.399	70.5	394-165	1,885.80

TYPE 670 DEAD CENTRE

Features

- Half Point , Carbide tipped
- Completely hardened and ground



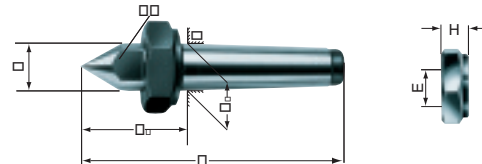
DEAD CENTRES TYPE 670

Morse Taper	Rohm Id No.	A (mm)	B (mm)	D (mm)	E (mm)	F (mm)	d1 (mm)	l1 (mm)	Code No.	Price \$
1	027438	12.2	80	7	7.6	22	12.065	26.5	394-205	161.60
2	027439	18	100	7	11	30	17.780	36	394-210	207.00
3	027440	24.1	125	11	15	38	23.825	44	394-215	267.00
4	026571	31.6	160	14	21	50	31.267	57.5	394-220	346.60
5	027441	44.7	200	18	29.4	63	44.399	70.5	394-225	614.70

TYPE 671 DEAD CENTRE

Features

- Full point with Draw-off nut
- Completely hardened and ground



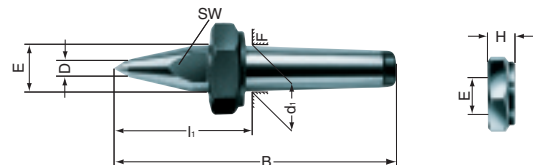
DEAD CENTRES TYPE 671

Morse Taper	Rohm Id No.	A (mm)	B (mm)	SW (mm)	E (mm)	F (mm)	d1 (mm)	l1 (mm)	Code No.	Price \$
1	005361	12.2	90	10	M16 x 1.5	24	12.065	36.5	394-230	94.40
2	005553	18	112	14	M22 x 1.5	32	17.780	48	394-235	108.60
3	005654	24.1	138	19	M27 x 1.5	41	23.825	57	394-240	125.20
4	005357	31.6	175	27	M36 x 1.5	55	31.267	72.5	394-245	189.60
5	005381	44.7	217	36	M48 x 1.5	75	44.399	87.5	394-250	313.40
6	005426	63.8	290	55	M68 x 1.5	100	63.348	108	394-255	786.30

TYPE 672 DEAD CENTRE

Features

- Extended full point with Draw-off nut
- Completely hardened and ground



DEAD CENTRES TYPE 672

Morse Taper	Rohm Id No.	A (mm)	B (mm)	SW (mm)	D (mm)	E (mm)	Nut Dia. (mm)	d1 (mm)	l1 (mm)	Code No.	Price \$
2	249575	18	118	14	10	M22 x 1.5	32	17.780	54	394-260	164.30
3	249576	24.1	148	19	10	M27 x 1.5	41	23.825	67	394-265	192.00
4	249577	31.6	186.5	27	14	M36 x 1.5	55	31.267	84	394-270	270.90
5	249578	44.7	242	36	16	M48 x 1.5	75	44.399	112	394-275	385.80
6	249579	63.8	330	55	20	M68 x 1.5	100	63.348	148	394-280	882.70