


**MAGNETIC SURFACE GRINDER CHUCKS**

For use on surface grinders, chucks have laminated one piece top plates. Two tie down clamps, two rails and removable on/off handle included. Ceramic magnet cannot lose magnetism.



| MAGNETIC SURFACE GRINDER CHUCKS                   |            |             |          |          |
|---|------------|-------------|----------|----------|
| Model No.   | Width (in) | Length (in) | Code No. | Price \$ |
| <b>STANDARD (1/4" POLES AND 1/8" SEPARATORS)</b>  |            |             |          |          |
| MCB-47  | 4          | 7           | 251-022  | 837.10   |
| MCB-510   | 5          | 10          | 251-026  | 1,114.40 |
| MCB-612   | 6          | 12          | 251-030  | 1,491.90 |
| MCB-614   | 6          | 14          | 251-034  | 1,672.40 |
| MCB-618   | 6          | 18          | 251-038  | 1,981.00 |
| MCB-812   | 8          | 12          | 251-039  | 1,871.00 |
| MCB-815   | 8          | 15          | 251-046  | 2,260.00 |
| MCB-824   | 8          | 24          | 251-054  | 3,653.30 |
| MCB-1015  | 10         | 15          | 251-055  | 3,543.40 |
| MCB-1018  | 10         | 18          | 251-057  | 4,253.90 |
| MCB-1024  | 10         | 24          | 251-059  | 5,980.40 |
| MCB-1212  | 12         | 12          | 251-061  | 2,873.80 |
| MCB-1218  | 12         | 18          | 251-063  | 5,433.90 |
| MCB-1224  | 12         | 24          | 251-065  | 6,728.80 |
| <b>FINE POLE (1/8" POLES AND 1/8" SEPARATORS)</b> |            |             |          |          |
| MC-36-FP  | 3          | 6           | 251-020  | 812.40   |
| MCB-47-FP   | 4          | 7           | 251-024  | 894.50   |
| MCB-510-FP  | 5          | 10          | 251-028  | 1,285.10 |
| MCB-612-FP  | 6          | 12          | 251-032  | 1,706.90 |
| MCB-614-FP  | 6          | 14          | 251-036  | 1,882.50 |
| MCB-618-FP  | 6          | 18          | 251-040  | 2,273.10 |
| MCB-812-FP  | 8          | 12          | 251-041  | 2,136.90 |
| MCB-815-FP  | 8          | 15          | 251-048  | 2,566.90 |
| MCB-818-FP  | 8          | 18          | 251-052  | 3,037.90 |
| MCB-824-FP  | 8          | 24          | 251-056  | 4,111.20 |
| MCB-1015-FP                                       | 10         | 15          | 251-067  | 3,873.20 |
| MCB-1018-FP                                       | 10         | 18          | 251-069  | 4,557.60 |
| MCB-1024-FP                                       | 10         | 24          | 251-071  | 6,287.30 |
| MCB-1212-FP                                       | 12         | 12          | 251-073  | 3,205.30 |
| MCB-1218-FP                                       | 12         | 18          | 251-075  | 5,773.70 |
| MCB-1224-FP                                       | 12         | 24          | 251-077  | 7,446.00 |


**MAGNETIC TOOLMAKERS CHUCKS**

- All models precision ground flat, square and parallel to an overall accuracy of 0.0005".
- Top, bottom and end magnetize simultaneously.
- Model MTC-VB has "V" capacity of 2-3/4" dia.
- Model MTC-LFP has 3/16" x 1/16" fine pole construction for holding small or thin parts; and removable side and end rails.



| MAGNETIC TOOLMAKERS CHUCKS |        |       |        |             |          |          |
|----------------------------|--------|-------|--------|-------------|----------|----------|
| Model No.                  | Length | Width | Height | Weight (lb) | Code No. | Price \$ |
| MTC-S                      | 5"     | 2"    | 2"     | 6           | 251-868  | 617.10   |
| MTC-L                      | 5-1/2  | 2-3/4 | 2-1/2  | 11          | 251-869  | 738.60   |
| MTC-LFP                    | 5-1/2  | 2-3/4 | 3"     | 12          | 251-870  | 802.70   |
| MTC-VB                     | 5-1/2  | 2-3/4 | 3-5/8  | 13          | 251-871  | 802.70   |
| MTC-VB-M**                 | 5-1/2  | 2-3/4 | 3-5/8  | 26          | 251-872  | 1,846.40 |

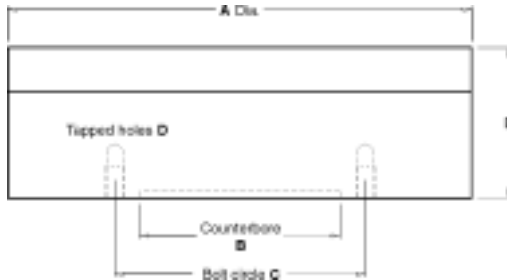
\*\* Matched pair of MTC-VB

# ROUND MAGNETIC CHUCKS & MAGNETIC LIFTS



## ROUND PERMANENT MAGNETIC CHUCKS

- Permanent ceramic magnets for superior holding power, never lose their strength.
- Back surface of the aluminum chuck body has tapped holes and turned counterbore for convenient mounting on machines.
- All models are watertight except 5-1/4" dia. which uses the swing-type on-off method.
- Standard pole models have 1/4" poles & 1/8" separators, fine pole models have 1/8" poles & 1/8" separators.



### ROUND PERMANENT MAGNETIC CHUCKS - STANDARD POLE

| Model No. | A      | B        | C        | D          | E       | Weight (lb) | Code No. | Price \$  |
|-----------|--------|----------|----------|------------|---------|-------------|----------|-----------|
| RMC-5     | 5-1/4  | 3 x 1/8  | 4"       | (4)1/4-20  | 2-13/16 | 15          | 251-876  | 851.80    |
| RMC-6     | 6-1/4  | 3 x 1/8  | 4"       | (4)1/4-20  | 2-15/16 | 17          | 251-877  | 1,313.00  |
| RMC-9     | 9-1/4  | 4 x 3/16 | 5"       | (4)3/8-16  | 2-15/16 | 36          | 251-878  | 2,320.70  |
| RMC-12    | 12-1/4 | 4 x 3/16 | 5"       | (4)3/8-16  | 2-15/16 | 60          | 251-879  | 3,357.80  |
| RMC-15    | 15-1/4 | 6 x 1/4  | 7-3/8    | (6)5/16-18 | 3-3/4   | 120         | 251-880  | 6,549.90  |
| RMC-16    | 16"    | 8 x 3/16 | 9"       | (6)3/8-16  | 2-15/16 | 96          | 251-881  | 6,720.60  |
| RMC-20    | 20"    | 11 x 1/4 | 12-13/32 | (6)3/8-16  | 4-1/8   | 205         | 251-882  | 11,005.60 |

### ROUND PERMANENT MAGNETIC CHUCKS - FINE POLE

| Model No. | A      | B        | C  | D             | E       | Weight (lb) | Code No. | Price \$ |
|-----------|--------|----------|----|---------------|---------|-------------|----------|----------|
| RMC-6-FP  | 6-1/4  | 3 x 1/8  | 4" | (4)1/4-20x1/2 | 2-15/16 | 18          | 251-883  | 1,646.10 |
| RMC-8-FP  | 7-3/4  | 4 x 3/16 | 4" | (4)3/8-16x1/2 | 2-15/16 | 26          | 251-884  | 2,465.10 |
| RMC-10-FB | 10"    | 4 x 3/16 | 5" | (4)3/8-16x1/2 | 2-15/16 | 43          | 251-885  | 2,873.80 |
| RMC-12-FB | 12-1/4 | 4 x 3/16 | 5" | (4)3/8-16x1/2 | 2-15/16 | 62          | 251-886  | 4,025.90 |



## LIFT MASTER - PERMANENT MAGNETIC LIFTS

- Allows one person to do the material loading and handling that once required two or more.
- Quick-release handle disengages the lift with a simple cam action.
- Uses max-C-mag ceramic magnets to ensure powerful holding force, with no chance for demagnetization.
- Grips and holds any ferrous material instantly.
- Designed for efficient, trouble free, low maintenance service.



### LIFT MASTER - PERMANENT MAGNETIC LIFTS

| Model No. | Length | Width | Height | Max. Lifting Capacity (lb) | Weight (lb) | Code No. | Price \$ |
|-----------|--------|-------|--------|----------------------------|-------------|----------|----------|
| LM-800    | 6-5/8  | 3-3/8 | 2-1/2  | 800*                       | 20          | 251-873  | 1,234.20 |
| LM-1600   | 8-1/2  | 4-7/8 | 2-1/2  | 1600*                      | 30          | 251-874  | 1,281.90 |
| LM-3000   | 11-1/4 | 6-3/8 | 2-1/2  | 3000*                      | 45          | 251-875  | 2,273.60 |

\* Capacity based on clean, flat rigid CRS. Derate for other conditions