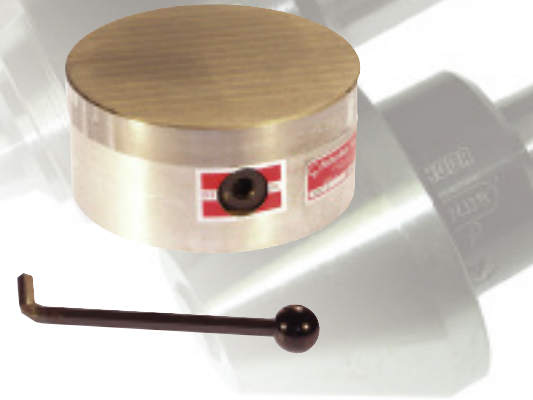
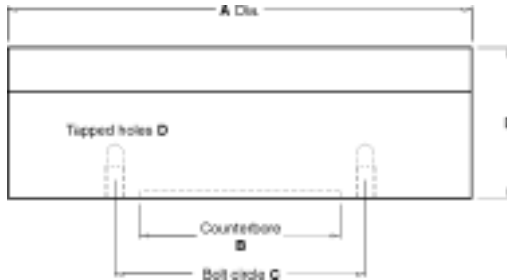


ROUND MAGNETIC CHUCKS & MAGNETIC LIFTS



ROUND PERMANENT MAGNETIC CHUCKS

- Permanent ceramic magnets for superior holding power, never lose their strength.
- Back surface of the aluminum chuck body has tapped holes and turned counterbore for convenient mounting on machines.
- All models are watertight except 5-1/4" dia. which uses the swing-type on-off method.
- Standard pole models have 1/4" poles & 1/8" separators, fine pole models have 1/8" poles & 1/8" separators.



ROUND PERMANENT MAGNETIC CHUCKS - STANDARD POLE

Model No.	A	B	C	D	E	Weight (lb)	Code No.	Price \$
RMC-5	5-1/4	3 x 1/8	4"	(4)1/4-20	2-13/16	15	251-876	851.80
RMC-6	6-1/4	3 x 1/8	4"	(4)1/4-20	2-15/16	17	251-877	1,313.00
RMC-9	9-1/4	4 x 3/16	5"	(4)3/8-16	2-15/16	36	251-878	2,320.70
RMC-12	12-1/4	4 x 3/16	5"	(4)3/8-16	2-15/16	60	251-879	3,357.80
RMC-15	15-1/4	6 x 1/4	7-3/8	(6)5/16-18	3-3/4	120	251-880	6,549.90
RMC-16	16"	8 x 3/16	9"	(6)3/8-16	2-15/16	96	251-881	6,720.60
RMC-20	20"	11 x 1/4	12-13/32	(6)3/8-16	4-1/8	205	251-882	11,005.60

ROUND PERMANENT MAGNETIC CHUCKS - FINE POLE

Model No.	A	B	C	D	E	Weight (lb)	Code No.	Price \$
RMC-6-FP	6-1/4	3 x 1/8	4"	(4)1/4-20x1/2	2-15/16	18	251-883	1,646.10
RMC-8-FP	7-3/4	4 x 3/16	4"	(4)3/8-16x1/2	2-15/16	26	251-884	2,465.10
RMC-10-FB	10"	4 x 3/16	5"	(4)3/8-16x1/2	2-15/16	43	251-885	2,873.80
RMC-12-FB	12-1/4	4 x 3/16	5"	(4)3/8-16x1/2	2-15/16	62	251-886	4,025.90



LIFT MASTER - PERMANENT MAGNETIC LIFTS

- Allows one person to do the material loading and handling that once required two or more.
- Quick-release handle disengages the lift with a simple cam action.
- Uses max-C-mag ceramic magnets to ensure powerful holding force, with no chance for demagnetization.
- Grips and holds any ferrous material instantly.
- Designed for efficient, trouble free, low maintenance service.



LIFT MASTER - PERMANENT MAGNETIC LIFTS

Model No.	Length	Width	Height	Max. Lifting Capacity (lb)	Weight (lb)	Code No.	Price \$
LM-800	6-5/8	3-3/8	2-1/2	800*	20	251-873	1,234.20
LM-1600	8-1/2	4-7/8	2-1/2	1600*	30	251-874	1,281.90
LM-3000	11-1/4	6-3/8	2-1/2	3000*	45	251-875	2,273.60

* Capacity based on clean, flat rigid CRS. Derate for other conditions



PERMANENT MAGNETIC LIFTER

(On/Off Type)

Features

- Very easy and convenient to operate – does not hurt surface of workpiece
- With a safe assembly attached, it will be locked when turned ON or OFF
- Increased efficiency
- Requires no power supply
- Small and light weight

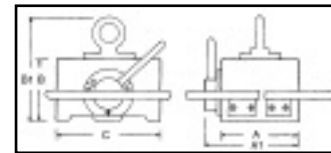


Specifications Model VLS - 25.4 mm = 1" 1 kg = 2.2 lbs.

Safety Coefficient: X3

Unit: mm

PERMANENT MAGNETIC LIFTER										
Model No.	Capacity		Dimensions						Order No.	Price \$
	kg	lbs	A	B	C	A1	B1			
VLS-12	120 kgf	264 lbs	145	77	100	176	150	230-972	587.20	
VLS-50	500 kgf	1100 lbs	190	155	265	240	260	230-974	2,836.73	
VLS-100	1000 kgf	2200 lbs	295	180	305	335	310	230-976	352.00	
VLS-200	2000 kgf	4400 lbs	415	200	365	455	355	230-978	8,696.70	
VLS-300	3000 kgf	6600 lbs	575	215	365	610	365	230-980	844.80	



Specifications Model VLS-V - 25.4 mm = 1" 1 kg = 2.2 lbs.

Safety Coefficient: X3

Unit: mm

PERMANENT MAGNETIC LIFTER										
Model No.	Capacity		Dimensions						Order No.	Price \$
	Steel Plate	Round Steel	A	B	C	A1	B1			
VLS-25V	250 kgf	150 kgf	350	205	185	400	300	230-982	1,514.49	
VLS-50V	500 kgf	300 kgf	140	130	205	240		230-984	2,370.39	
VLS-100V	1000 kgf	600 kgf	185	150	300	290		230-986	4,565.06	

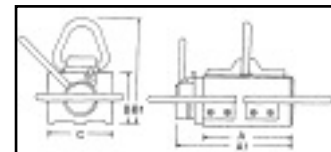


Specifications Model VLP - 25.4 mm = 1" 1 kg = 2.2 lbs.

Safety Coefficient: X3

Unit: mm

PERMANENT MAGNETIC LIFTER										
Model No.	Capacity		Dimensions						Order No.	Price \$
	kg	lbs	A	B	C	A1	B1			
VLP-40	400 kgf	880 lbs	208	140	185	285	270	230-988	1,898.43	
VLP-80	800 kgf	1760 lbs	385	140	185	450	270	230-990	3,967.06	



Specifications Model VLP-V - 25.4 mm = 1" 1 kg = 2.2 lbs.

Safety Coefficient: X3

Unit: mm

PERMANENT MAGNETIC LIFTER										
Model No.	Capacity		Dimensions						Order No.	Price \$
	Steel Plate	Round Steel	A	B	C	A1	B1			
VLP-20V	200 kgf	120 kgf	206	148	100	265	300	230-992	1,234.66	
VLP-40V	400 kgf	240 kgf	385	148	100	445	300	230-994	1,344.00	

