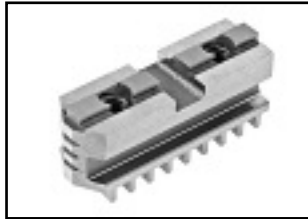
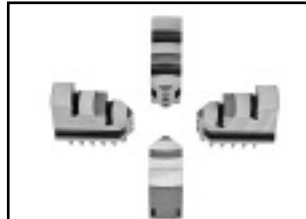




REPLACEMENT JAWS FOR BISON SELF-CENTERING CHUCKS



Hard Master Jaws



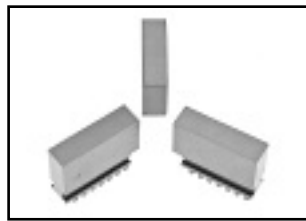
Hard Solid O.D.



Hard Top Jaws



Hard Solid I.D.



Soft Solid Jaws



Soft Top Jaws


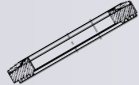
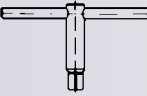
SPARE PARTS FOR BISON SELF-CENTERING CHUCKS

Parts	For Chuck Series	Qty. per set	3"	4"	5"	6"	8"	10"	12"	16"	20"	25"	32"
HARD SOLID O.D. JAWS													
	3200	3	467-700	467-705	467-710	467-715	467-720	467-725	467-730	467-735	467-740	467-745	
	Price \$		103.20	117.00	131.50	151.40	161.60	199.80	328.60	381.10	636.90	1,049.20	
	3600	4			467-900	467-902	467-904	467-906	467-908	467-910	467-912	467-914	
	Price \$				175.20	201.80	200.50	244.10	432.90	508.60	1,009.60	1,164.40	
Sold in Sets	3800	6			467-916	467-918	467-920	467-922					
Price \$					302.70	250.80	399.50	513.40					
HARD SOLID I.D. JAWS													
	3200	3	467-600	467-605	467-610	467-615	467-620	467-625	467-630	467-635	467-640	467-645	467-647
	Price \$		103.20	92.90	131.50	151.40	161.60	200.50	328.60	381.10	789.40	1,049.20	360.80
	3600	4			467-924	467-926	467-928	467-930	467-932	467-934	467-936	467-938	
	Price \$				175.20	201.80	200.50	244.10	432.90	508.60	1,009.60	1,141.20	
Sold in Sets	3800	6			467-940	467-942	467-944	467-946					
Price \$					302.70	323.20	399.50	513.40					
SOFT SOLID JAWS													
	3200	3	467-749	467-750	467-755	467-760	467-765	467-770	467-775	467-780	467-785	467-790	
	Price \$		70.00	76.40	86.10	99.80	114.70	145.20	231.10	250.90	557.00	664.70	
	& 3500	4			467-948	467-950	467-952	467-954	467-956	467-958	467-960		
	Price \$				115.90	133.10	150.70	193.60	327.30	494.90	713.10		
Sold in Sets													
HARD TOP JAWS													
	3200	3			460-705	460-710	460-715	460-720	460-725	460-730	460-735	460-740	460-745
	Price \$				160.20	196.40	233.20	273.40	338.20	456.80	908.00	962.60	696.00
	& 3500	4			460-805	460-810	460-815	460-820	460-825	460-830	460-835	460-840	
	Price \$				186.10	186.10	289.10	366.10	451.30	609.50	1,247.50	1,247.50	
Sold in Sets	3800	6			460-910	460-915	460-920	460-925					
Price \$					349.10	413.10	487.50	599.90					
SOFT TOP JAWS													
	3100	1			460-930	460-935	460-940	460-945	460-950				
	Price \$				34.80	30.50	45.00	60.90	79.40				
	& 3500	1			465-105	465-110	465-115	465-120	465-125	465-130	465-135	465-140	465-145
	Price \$				21.90	25.80	29.20	42.50	57.50	74.20	110.70	145.20	281.60
Sold Per Piece	3600	1			465-150	465-152	465-154	465-156	465-158	465-160	465-162	465-164	
Price \$					17.28	18.70	24.60	29.80	59.40	59.40	100.44	117.18	
HARD MASTER JAWS													
	3100	2			465-170	465-175	465-180	465-185	465-190				
	Price \$				149.50	186.80	237.30	237.30	346.30				
	& 3500	3			467-355	467-360	467-365	467-370	467-375	467-380	467-385	467-390	467-395
	Price \$				164.30	197.70	203.90	280.90	355.20	518.10	886.90	956.40	796.10
Sold in Sets	3600	4			467-405	467-410	467-415	467-420	467-425	467-430	467-435	467-440	
Price \$					218.90	263.20	272.00	370.90	471.10	689.20	978.30	1,430.20	
Sold in Sets	3800	6			467-505	467-510	467-515	467-520	467-525				
Price \$					345.00	372.90	415.90	535.90	726.00				

SPARE PARTS FOR BISON SELF-CENTERING CHUCKS



SPARE PARTS FOR BISON SELF-CENTERING CHUCKS

SPARE PARTS FOR BISON SELF-CENTERING CHUCKS													
Parts	For Chuck Series	Qty. per set	3"	4"	5"	6"	8"	10"	12"	16"	20"	25"	32"
PINION 	3200	1	467-300	467-305	467-310	467-315	467-320	467-325	467-330	467-335	467-340	467-345	467-346
	Price \$		22.40	26.50	20.50	23.70	28.50	43.10	52.80	69.30	205.90	244.10	413.10
	3600	1			467-200	467-202	467-204	467-206	467-208	467-210			
	Price \$				27.60	29.90	35.50	43.10	52.80	69.30			
SCROLL PLATE 	3200	1	467-104	467-105	467-110	467-115	467-120	467-125	467-130	467-135	467-140	467-145	467-146
	& 3600	Price \$	75.70	75.70	90.00	104.30	125.60	168.40	222.30	514.00	1,092.80	1,629.30	1,850.20
	3500	1		467-829	467-830	467-835	467-840	467-845	467-850				
	& 3865	Price \$		141.80	166.40	208.00	276.80	370.90	857.60				
WRENCH 	3200	1	460-400	460-405	460-405	460-415	460-415	460-425	460-425	460-435	460-440	460-440	460-445
	Price \$		23.40	29.50	29.50	32.00	32.00	40.50	40.50	55.30	84.80	84.80	108.00
	Square Sizes		.2344	.3543	.3543	.4331	.4331	.5512	.5512	.6693	.7480	.7480	.7480

BISON CAMLOCK AND DIN STUDS AND SCREWS

Each Item Sold by Piece

BISON CAMLOCK AND DIN STUDS AND SCREWS									
Size	Diameter	Thread	Pcs. in Set	Code No.	Price \$	Camlock Stud		Code No.	Price \$
						Locking Screw			
D1-3	9/16	M10 x 1	3	467-230	18.40	3		467-242	8.30
D1-4	5/8	M10 x 1	3	467-232	21.50	3		467-244	8.30
D1-5	3/4	M12 x 1	6	467-234	24.50	6		467-246	6.70
D1-6	7/8	M16 x 1.5	6	467-236	28.60	6		467-248	8.30
D1-8	1	M20 x 1.5	6	467-238	31.30	6		467-250	8.30
D1-11	1-3/16	M22 x 1.5	6	467-240	35.50	6		467-252	6.70



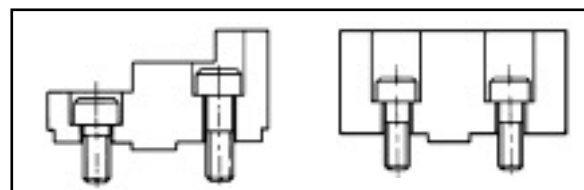
Jaw's Mounting Screws for Self-Centering Chucks

JAW'S MOUNTING SCREWS FOR SELF-CENTERING CHUCKS								
Chuck Size	Screw 1		Code No.	Price \$	Screw 2		Code No.	Price \$
5	5/16	18 x 3/4	467-254	8.10	5/16	18 x 1	467-266	7.70
6	3/8	16 x 7/8	467-256	7.56	3/8	16 x 1-1/4	467-268	7.40
8	3/8	16 x 1	467-258	9.10	3/8	16 x 1-3/8	467-270	8.32
10	1/2	13 x 1-1/8	467-260	10.70	1/2	13 x 1-5/8	467-272	10.70
12	1/2	13 x 1-1/8	467-260	10.70	1/2	13 x 1-5/8	467-272	10.70
16	5/8	11 x 1-3/8	467-262	11.88	5/8	11 x 2	467-274	11.88
20	3/4	10 x 1-5/8	467-264	12.00	3/4	10 x 3	467-276	19.00
25	3/4	10 x 1-5/8	467-264	12.00	3/4	10 x 3	467-276	19.00
32	3/4	10 x 1-5/8	467-264	12.00	3/4	10 x 3-1/8	467-278	20.10



Din Studs

DIN STUDS			
Size	Code No.	Price \$	
Din 6	467-280	13.90	
Din 8	467-282	27.60	
D 11	467-284	24.20	





SPARE PARTS FOR BISON FOUR-JAW INDEPENDENT LATHE CHUCKS

Ordering Information:

1. Identify the part on Chart B
2. Note the number of parts required for your chuck on Table B1
3. Refer to Table B2 for the Part Mark and Code Number Category. Then refer below for the complete code number that would be applicable for your particular chuck. When ordering chuck parts without code numbers specify the part mark, size and description.

Table B1

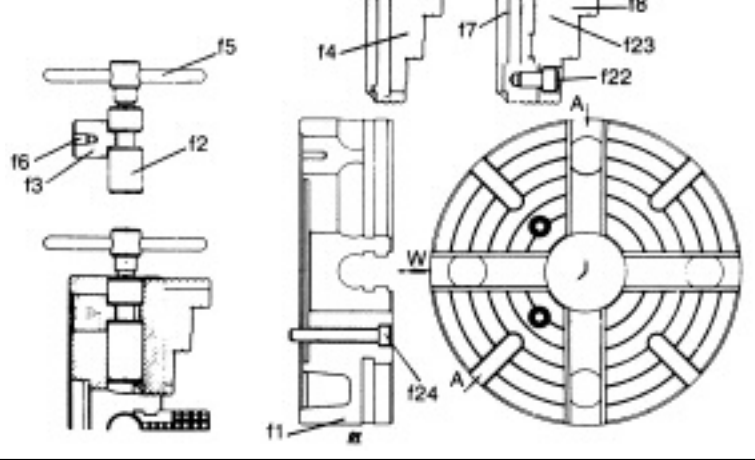
No. of Parts Required

Part No.	Pcs. per Chuck
f2	4
f3	4
f4	4
f5	4
f6	4
f7+f8	4
f22	4
f23	4
f24	4

Table B2

Description	Part Mark
Operating Screw	f2
Thrust Bearing	f3
Rev. Solid Jaw	f4
Wrench	f5
Screw	f6
Master Jaw	f7
Hard Top Jaw	f8
Two-Piece Hard Jaw	f7+f8
Screws for 2-pc Hard Jaw	f22+f23
Mounting Through Bolt	F24

Chart B



Operating Screws

OPERATING SCREWS		
Chuck Size (in.)	Code No.	Price \$
8	465-505	39.10
10	465-510	43.40
12	465-515	47.70
16	465-520	58.70
20	465-525	78.20
25	465-530	106.90
32	465-535	160.50

Thrust Bearing



THRUST BEARING		
Chuck Size (in.)	Code No.	Price \$
8	465-605	23.00
10	465-610	25.80
12	465-615	32.80
16	465-620	39.10
20	465-625	47.10
25	465-630	61.40
32	465-635	69.30

Hard Solid Reversible Jaws



HARD SOLID REVERSIBLE JAWS		
Chuck Size (in.)	Code No.	Price \$
8	465-705	305.40
10	465-710	357.30
12	465-715	436.30
16	465-720	619.70
20	465-725	864.40
25	465-730	1,251.60
32	465-735	1,851.50



Wrenches

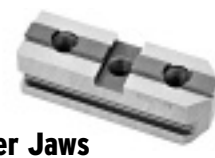
WRENCHES			
Square	Chuck Size (in.)	Code No.	Price \$
.4331	8	465-805	39.30
.4331	10	465-805	39.30
.5512	12	465-815	39.90
.5512	16	465-815	39.90
.6693	20	465-825	91.50
.6693	25	465-825	91.50
.7480	32	465-835	119.70

Hard Top Jaws



HARD TOP JAWS		
Chuck Size (in.)	Code No.	Price \$
8	465-840	113.20
10	465-842	321.90
12	465-844	375.10
16	465-846	150.70
20	465-848	223.00
25	465-850	248.20
32	465-852	656.64

Hard Master Jaws



HARD MASTER JAWS		
Chuck Size (in.)	Code No.	Price \$
8	465-860	86.90
10	465-862	82.10
12	465-864	97.00
16	465-866	136.40
20	465-868	173.90
25	465-870	227.70
32	465-872	424.70