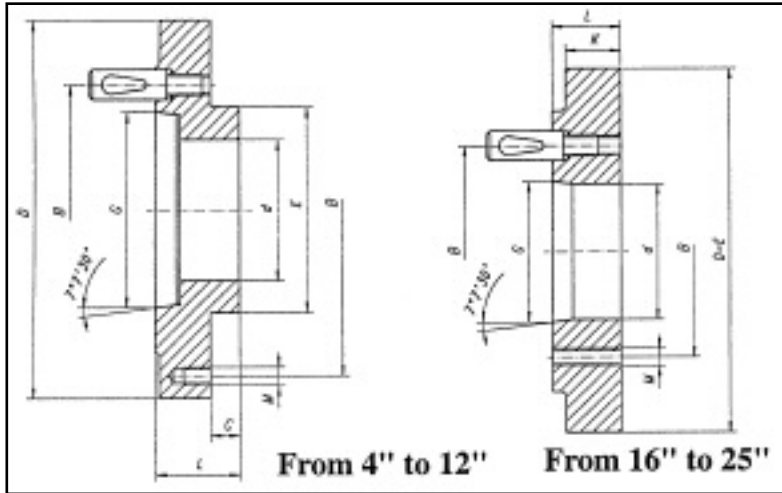




STEEL ADAPTERS FOR "SET-TRU" CHUCKS



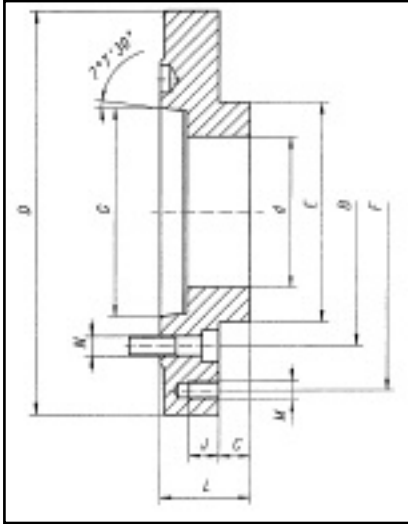
D - Type

STEEL ADAPTERS FOR "SET-TRU" CHUCKS																	
Chuck Dia.	Taper Size	Qty	Studs Dia.	D	B	G	d	E	F	M	C	L	K	Weight lbs.	Code #	Price \$	
4	D1-3	3	9/16	3.94	2.78	2.1250	.787	1.771	3.268	M8 X 1.25	.47	1.50	-	3.31	435-690	260.10	
	D1-4		5/8	4.25	3.25	2.5005						1.57	-	3.97	435-691	313.70	
5	D1-3	3	9/16	4.92	2.78	2.1250	1.378	2.164	4.252	M8 X 1.25	.55	1.57	-	5.95	435-692	359.20	
	D1-4	3	5/8	4.92	3.25	2.5005						1.54	-	5.73	435-693	386.90	
	D1-5	6	3/4	5.31	4.13	3.2503						1.73	-	6.92	435-694	429.50	
6-1/4	D1-6	6	7/8	7.12	5.25	4.1878						1.89	-	13.06	435-695	429.50	
	D1-3	3	9/16	6.30	2.78	2.1250	1.654	3.385	5.512	M10 X 1.5	.63	1.81	-	10.80	435-700	301.40	
	D1-4	3	5/8	6.30	3.25	2.5005						1.81	-	9.92	435-705	301.40	
	D1-5	6	3/4	6.30	4.13	3.2503						1.81	-	9.89	435-710	301.40	
8"	D1-6	6	7/8	6.69	5.25	4.1878						1.97	-	13.00	435-712	436.40	
	D1-3	3	9/16	7.87	2.78	2.1250	2.024	4.330	6.929	M10 X 1.5	.67	1.30	-	10.36	435-715	336.10	
	D1-4	3	5/8		3.25	2.5005	2.165					1.30	-	10.36	435-720	336.10	
	D1-5	6	3/4		4.13	3.2503	2.165					1.85	-	15.87	435-725	355.90	
10"	D1-6	6	7/8		5.25	4.1878	2.165					2.01	-	17.64	435-730	336.10	
	D1-4	3	5/8	9.84	3.25	2.6005	2.382	5.708	8.819	M12 X 1.75	.75	1.50	-	18.84	435-732	584.80	
	D1-5	6	3/4		4.13	3.2510	3.130					1.50	-	17.64	435-735	405.60	
12-1/2"	D1-6	6	7/8		5.25	4.1878	2.992					2.09	-	28.44	435-740	429.50	
	D1-8	6	1		6.75	5.50055	2.992					2.36	-	32.41	435-745	460.90	
	D1-6	6	7/8	12.40	5.25	4.1878	4.055	7.086	11.260	M16 X 2	.75	1.50	-	28.44	435-750	516.10	
	D1-8		1		6.75	5.50055						2.24	-	47.84	435-755	738.30	
15-3/4"	D1-11		1-3/16		9.25	7.75055						2.52	-	52.91	435-760	781.90	
	D1-6	6	7/8	11.75	5.25	4.1878	4.055	11.75	6.718	5/8 X 11	-	1.38	.87	29.0	435-762	1,127.00	
	D1-8		1		6.75	5.50055	5.358					-	1.50	27.2	435-764	1,127.00	
	D1-11		1-3/16		9.25	7.75055	5.358					-	1.89	26.8	435-766	1,202.20	
20"	D1-8	6	1	16.02	6.75	5.50055	5.358	16.02	9.252	3/4 X 10	-	1.50	1.50	74	435-768	1,533.60	
	D1-11		1-3/16		9.25	7.75055	7.590					-	1.73	1.73	78	435-770	1,689.00
	D1-15		1-3/8		13.00	11.2505	7.480					-	2.05	2.05	83	435-772	1,752.30
25"	D1-8	6	1	16.02	6.75	5.50055	5.358	16.02	13.071	3/4 X 10	-	1.50	1.50	74	435-774	2,070.50	
	D1-11		1-3/16		9.25	7.75055	7.590					-	1.73	1.73	78	435-776	2,350.90
	D1-15		1-3/8		13.00	11.2505	9.920					-	2.05	2.05	83	435-778	2,070.50

STEEL ADAPTERS FOR "SET-TRU" CHUCKS



STEEL ADAPTERS FOR "SET-TRU" CHUCKS

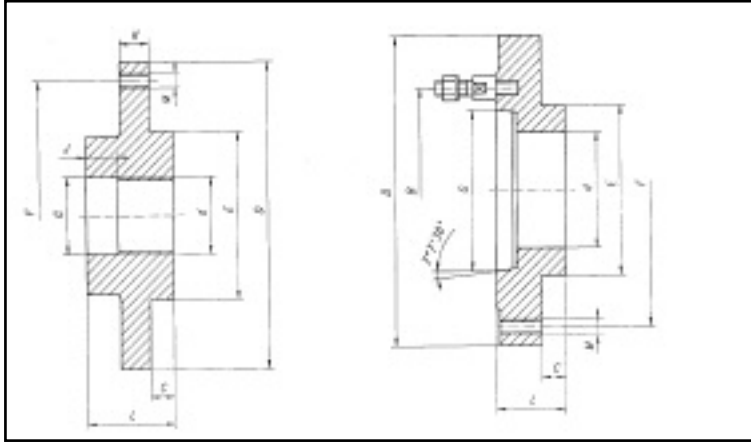


A - Type

■ STEEL ADAPTERS FOR "SET-TRU" CHUCKS																	
Chuck Dia.	Taper Size	D	G	d	B	E	F	M	J	C	L	N	# of Bolts	Weight lbs.	Code #	Price \$	
5"	A4	4.92	2.5005	1.378	3.252	2.164	4.252	M8 - 1.25	.87	.55	1.42	7/16-14	4	4.8	435-790	252.80	
	A5	4.92	3.2505		4.126				.87		1.42	7/16-14	4	4.2	435-792	319.60	
	A6	6.30	4.1880		5.252				.53		1.89	1/2-13		9.1	435-794	362.20	
6-1/4"	A5	6.30	3.2505	1.654	4.126	3.385	5.512	M10 - 1.5	.82	.62	1.45	7/16-14	4	6.77	435-800	237.30	
8"	A5	7.87	3.2505	2.165	4.126	4.330	6.929	M10 - 1.5	.62	.66	1.29	3/8-16	4	9.3	435-805	260.50	
	A6		4.1880		5.252				1.10		1.77	1/2-13		13.5	435-810	306.80	
10"	A5	9.84	3.2505	2.992	4.126	5.708	8.819	M12 - 1.75	.74	.74	1.49	7/16-14	4	17.3	435-815	376.30	
	A6		4.1880		5.252				.74		1.49	1/2-13		17.3	435-820	376.30	
	A8		5.5007		6.748				1.06		1.81	5/8-11		20.2	435-825	400.20	
12-1/2"	A6	12.40	4.1880	4.055	5.252	7.086	11.260	M16 - 2	.74	.74	1.49	1/2-13	4	27.3	435-830	509.90	
	A8		5.5007		6.748				1.06		1.81	5/8-11		35.7	435-835	550.20	
	A11		7.7507		9.252				1.42		2.19	3/4-10		41.20	435-836	845.00	
15-3/4"	A6	11.75	4.1880	4.055	5.252	11.75	6.748	5/8 - 11	1.38	-	1.38	1/2-13	6	31.4	435-837	731.20	
	A8		5.5007	5.346	6.748				1.14	-	1.46	5/8-11		28.8	435-838	731.20	
	A11		7.7507	5.354	9.252				1.06	-	1.89	3/4-10		35.8	435-839	951.90	
20"	A8	16.02	5.5007	5.346	6.748	16.02	9.252	3/4 - 10	1.42	-	1.42	5/8-11	6	69	435-844	1,507.90	
	A11		7.7507	7.590	9.252				1.18	-	1.42	3/4-10		61	435-846	1,524.70	
	A15		11.2505	7.480	13.000				1.18	-	2.05	7/8-9		76	435-848	1,693.90	
25"	A8	16.02	5.5007	5.346	6.748	16.02	13.000	3/4 - 10	1.42	-	1.42	5/8-11	6	69	435-850	2,309.30	
	A11	16.02	7.7507	7.590	9.252			3/4 - 10	1.42	-	1.42	3/4-10	61	61	435-852	2,343.00	
	A15	13.02	11.2505	9.921	13.000			3/4 - 10	2.05	-	2.05	7/8-9	76	76	435-854	2,408.30	
	A20	21.00	16.2518	9.921	18.252			1 - 8	2.76	-	2.76	1-8	90	90	435-856	2,408.30	



FOR "SET-TRU" CHUCKS



Threaded

■ FOR "SET-TRU" CHUCKS															
Chuck Dia.	D	Thread	d	G	E	F	L	C	K	M	# of Bolts	Weight lbs.	Code #	Price \$	
4"	3.94	1-10 UNS-2B	1.0150	1.771	3.268	1.54	0.47	.51		M8 X 1.25	3	4.85	435-860	212.90	
		1-1/2 - 8 UN-2B	1.5150										5.29	435-861	197.30
5"	4.92	1-10 UNS-2B	1.0150	2.164	4.252	1.54	0.55	.51		M8 X 1.25	3	6.17	435-862	239.40	
		1-1/2 - 8 UN-2B	1.5150			1.54							6.61	435-863	234.50
		2-3/16 - 10 Hardinge	2.1889			2.44							7.05	435-864	233.50
		2-1/4 - 8 UN-2B	2.260			1.54							6.8	435-865	234.50
6-1/4"	6.30	1-1/2 - 8 UN-2B	1.5150	3.385	5.512	1.50	0.63	.59		M10 X 1.5	3	7.05	435-866	278.20	
		2-3/16 - 10 Hardinge	2.1889			1.61							7.50	435-867	271.10
		2-1/4 - 8 UN-2B	2.2600			1.75							7.94	435-868	275.10
8"	7.87	1-1/2 - 8 UN-2B	1.5150	4.330	6.929	1.50	0.67	.59		M10 X 1.5	3	9.92	435-869	345.40	
		2-1/4 - 8 UN-2B	2.2600			1.75							11.46	435-870	345.40
		2-3/8 - 6 UN-2B	2.3850			2.00							13.89	435-871	345.40
10"	9.84	2-3/8 - 6 UN-2B	2.3850	5.708	8.819	2.00	0.74	.75		M12 X 1.75	3	30.0	435-872	518.80	
12-1/2"	12.40	2-3/8 - 6 UN-2B	2.3850	7.086	11.280	2.00	1.00	.94		M16 X 2	3	50.0	435-873	700.50	

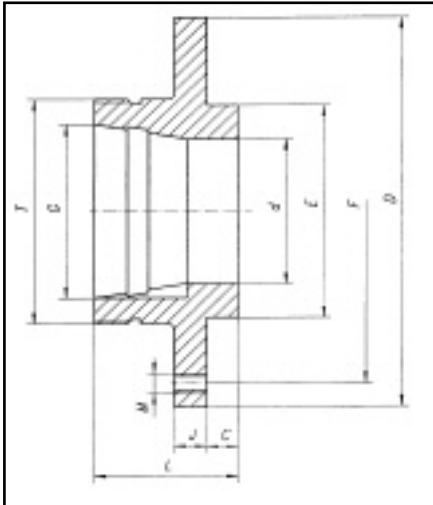
C - Type/DIN 55027

■ FOR "SET-TRU" CHUCKS														
Chuck Dia.	Taper Size	D	G	d	E	F	B	C	L	M	# of Studs	Weight lbs.	Code #	Price \$
5"	C-5	4.92	3.251	1.38	2.164	4.252	4.126	0.55	1.46	M8 X 1.25	4	3.4	435-874	305.80
6-1/4"	C-6	6.30	4.189	1.65	3.385	5.512	3.346	0.63	1.26	M10 X 1.5	4	6.0	435-875	330.50
8"	C-6	7.87	4.188	2.17	4.330	6.929	5.252	0.67	1.57	M10 X 1.5	4	12.0	435-876	442.30
10"	C-6	9.84	4.188	2.99	5.708	8.819	5.252	0.75	1.50	M12 X 1.75	4	28.0	435-877	476.00
12-1/2"	C-8	12.4	5.501	4.06	7.086	11.26	6.748	0.75	1.69	M16 X 2	4	48.0	435-878	841.00
15-3/4"	C-8	11.75	5.501	5.35	11.75	6.75	6.75	-	1.46	5/8 X 11	6	27	435-879	1,113.10
	C-11		7.751	4.72			9.25	-				25	435-880	884.90
20"	C-8	16.02	5.501	5.35	16.02	9.25	6.75	-	1.42	3/4 X 10	6	70	435-881	1,409.00
	C-11		7.751	7.57			9.25	-	1.42			66	435-882	1,385.20
	C15		11.251	7.48			13.0	-	2.05			86	435-883	1,088.30
25"	C-8	16.02	5.501	5.35	16.02	13.0	6.75	-	1.42	3/4 X 10	6	70	435-884	1,787.90
	C-11		7.751	7.57			9.25	-	1.42			66	435-885	2,127.30
	C-15		11.251	9.92			13.0	-	2.05			75	435-886	1,787.90

STEEL ADAPTERS FOR "SET-TRU" CHUCKS



STEEL ADAPTERS FOR "SET-TRU" CHUCKS

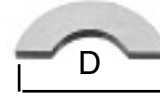
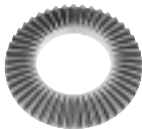


L-Type

STEEL ADAPTERS FOR "SET-TRU" CHUCKS

Chuck Dia.	D	Taper Size	Thread T-UNS3	G	D	E	F	M	J	C	L	Weight lbs.	Code #	Price \$
6-1/4	6.30	L00	3-3/4 - 6	2.750	2.20	3.385	5.51	M10 X 1.5	0.79	0.63	2.56	9.0	435-887	338.40
		L0	4-1/2 - 6	3.250	2.60							9.5	435-888	357.20
8	7.87	L00	3-3/4 - 6	2.750	2.20	4.330	6.93	M10 X 1.5	0.79	0.67	2.56	15.0	435-889	319.60
		L0	4-1/2 - 6	3.250	2.60						2.56	15.4	435-890	331.50
		L1	6 - 6	4.125	3.35						2.99	16.5	435-891	355.20
10	9.84	L00	3-3/4 - 6	2.750	2.20	5.708	8.82	M12 X 1.75	0.91	0.75	2.76	25.0	435-892	432.40
		L0	4-1/2 - 6	3.250	2.60						2.76	26.1	435-893	432.40
		L1	6 - 6	4.125	3.35						2.99	37.0	435-894	432.40
12-1/2	12.40	L0	4-1/2 - 6	3.250	2.60	7.086	11.26	M16 X 2	0.91	0.75	2.76	37.0	435-895	736.20
		L1	6 - 6	4.125	3.35						2.99	37.0	435-896	736.20
		L2	7-3/4 - 5	5.250	4.29						3.50	38.8	435-897	796.50
15-3/4	11.75	L1	6 - 6	4.125	3.35	11.75	6.75	5/8"X11	0.87	-	2.95	34.2	435-898	1,020.10
		L2	7-3/4 - 5	5.250	4.29						3.46	45.4	435-899	1,132.90
		L3	10-3/8 - 4	6.500	5.43						3.94	67.2	435-901	1,223.00
20	19.68	L2	7-3/4 - 5	5.250	4.29	16.02	9.25	3/4"X10	1.18	-	3.66	60.2	435-902	1,978.90
		L3	10-3/8 - 4	6.500	5.43						4.14	81.33	435-903	1,829.30

SPARE PARTS FOR "SET-TRU" CHUCKS



SPARE PARTS FOR "SET-TRU" CHUCKS

Chuck Dia.	Scroll			Pinion			Wrench			Pinion Sleeve		Half Ring							
	Code No.	Price \$	Weight lbs.	Code No.	Price \$	Weight lbs.	Code No.	Price \$	Size	Code No.	Price \$	ID	Code No.	Price \$	D				
4	467-105	75.70	2.74	.49	.34	467-305	26.50	.98	1.40	.12	460-405	29.50	.35	-	460-458	3.60	-		
5	467-829	141.80	3.70	.63	.84	467-799	37.80	.98	1.44	.13	460-405	29.50	.35	460-450	24.20	.98	460-459	12.40	1.52
6	467-830	166.40	4.88	.83	2.03	467-800	43.70	1.1	1.57	.18	460-415	32.00	.43	460-451	33.30	1.1	460-460	17.80	1.72
8	467-835	208.00	6.24	.94	3.62	467-805	50.60	1.2	1.99	.37	460-415	32.00	.43	460-452	38.40	1.2	460-461	20.50	1.85
10	467-840	276.80	7.82	1.1	4.54	467-810	60.90	1.4	2.36	.44	460-425	40.50	.55	460-453	47.50	1.4	460-462	25.80	1.94
12	467-845	370.90	10.1	1.2	10.2	467-815	74.60	1.5	2.85	.71	460-425	40.50	.55	460-454	57.40	1.5	460-463	30.20	2.17
16	467-850	857.60	12.9	1.3	22.7	467-820	97.00	1.7	3.66	1.3	460-435	55.30	.67	460-455	80.80	1.7	460-464	43.50	2.42
20	-	-	16.4	1.2	36.4	467-821	373.10	2.0	4.45	2.1	460-440	84.80	.75	460-456	109.90	2.0	460-465	35.50	2.76
25	-	-	21.3	1.6	65.7	467-822	448.30	2.0	5.24	2.5	460-440	84.80	.75	460-457	129.90	2.0	460-466	54.80	2.95