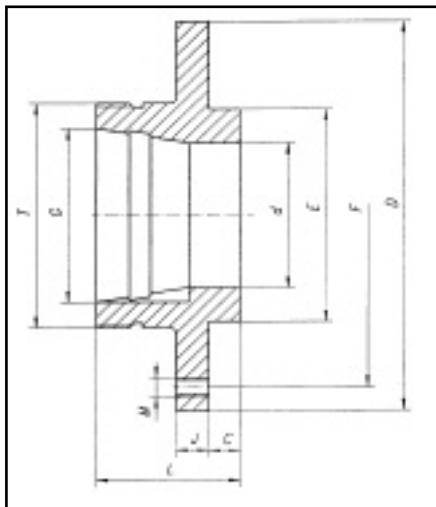


STEEL ADAPTERS FOR "SET-TRU" CHUCKS



STEEL ADAPTERS FOR "SET-TRU" CHUCKS

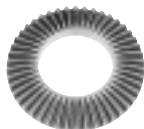


L-Type

STEEL ADAPTERS FOR "SET-TRU" CHUCKS

Chuck Dia.	D	Taper Size	Thread T-UNS3	G	D	E	F	M	J	C	L	Weight lbs.	Code #	Price \$
6-1/4	6.30	L00	3-3/4 - 6	2.750	2.20	3.385	5.51	M10 X 1.5	0.79	0.63	2.56	9.0	435-887	338.40
		L0	4-1/2 - 6	3.250	2.60							9.5	435-888	357.20
8	7.87	L00	3-3/4 - 6	2.750	2.20	4.330	6.93	M10 X 1.5	0.79	0.67	2.56	15.0	435-889	319.60
		L0	4-1/2 - 6	3.250	2.60						2.56	15.4	435-890	331.50
		L1	6 - 6	4.125	3.35						2.99	16.5	435-891	355.20
10	9.84	L00	3-3/4 - 6	2.750	2.20	5.708	8.82	M12 X 1.75	0.91	0.75	2.76	25.0	435-892	432.40
		L0	4-1/2 - 6	3.250	2.60						2.76	26.1	435-893	432.40
		L1	6 - 6	4.125	3.35						2.99	37.0	435-894	432.40
12-1/2	12.40	L0	4-1/2 - 6	3.250	2.60	7.086	11.26	M16 X 2	0.91	0.75	2.76	37.0	435-895	736.20
		L1	6 - 6	4.125	3.35						2.99	37.0	435-896	736.20
		L2	7-3/4 - 5	5.250	4.29						3.50	38.8	435-897	796.50
15-3/4	11.75	L1	6 - 6	4.125	3.35	11.75	6.75	5/8"X11	0.87	-	2.95	34.2	435-898	1,020.10
		L2	7-3/4 - 5	5.250	4.29						3.46	45.4	435-899	1,132.90
		L3	10-3/8 - 4	6.500	5.43						3.94	67.2	435-901	1,223.00
20	19.68	L2	7-3/4 - 5	5.250	4.29	16.02	9.25	3/4"X10	1.18	-	3.66	60.2	435-902	1,978.90
		L3	10-3/8 - 4	6.500	5.43						4.14	81.33	435-903	1,829.30

SPARE PARTS FOR "SET-TRU" CHUCKS



SPARE PARTS FOR "SET-TRU" CHUCKS

Chuck Dia.	Scroll			Pinion			Wrench			Pinion Sleeve		Half Ring							
	Code No.	Price \$	Weight lbs.	Code No.	Price \$	Weight lbs.	Code No.	Price \$	Size	Code No.	Price \$	ID	Code No.	Price \$	D				
4	467-105	75.70	2.74	.49	.34	467-305	26.50	.98	1.40	.12	460-405	29.50	.35	-	460-458	3.60	-		
5	467-829	141.80	3.70	.63	.84	467-799	37.80	.98	1.44	.13	460-405	29.50	.35	460-450	24.20	.98	460-459	12.40	1.52
6	467-830	166.40	4.88	.83	2.03	467-800	43.70	1.1	1.57	.18	460-415	32.00	.43	460-451	33.30	1.1	460-460	17.80	1.72
8	467-835	208.00	6.24	.94	3.62	467-805	50.60	1.2	1.99	.37	460-415	32.00	.43	460-452	38.40	1.2	460-461	20.50	1.85
10	467-840	276.80	7.82	1.1	4.54	467-810	60.90	1.4	2.36	.44	460-425	40.50	.55	460-453	47.50	1.4	460-462	25.80	1.94
12	467-845	370.90	10.1	1.2	10.2	467-815	74.60	1.5	2.85	.71	460-425	40.50	.55	460-454	57.40	1.5	460-463	30.20	2.17
16	467-850	857.60	12.9	1.3	22.7	467-820	97.00	1.7	3.66	1.3	460-435	55.30	.67	460-455	80.80	1.7	460-464	43.50	2.42
20	-	-	16.4	1.2	36.4	467-821	373.10	2.0	4.45	2.1	460-440	84.80	.75	460-456	109.90	2.0	460-465	35.50	2.76
25	-	-	21.3	1.6	65.7	467-822	448.30	2.0	5.24	2.5	460-440	84.80	.75	460-457	129.90	2.0	460-466	54.80	2.95



SPARE PARTS FOR "SET-TRU" CHUCKS

3 pc. set



Hard Top Jaws

6 pc. set



Sold in sets

3 pc. set



Hard Master Jaws

6 pc. set



Sold in sets

Sold Individually



Soft Top Jaws

Sold Individually



HARD TOP JAWS				
Chuck Dia.	3-Jaw Code #	Price \$	6-Jaw Code #	Price \$
5	460-705	160.20	460-908	303.80
6	460-710	196.40	460-910	349.10
8	460-715	233.20	460-915	413.10
10	460-720	273.40	460-920	487.50
12	460-725	338.20	460-925	599.90
16	460-730	456.80	460-926	1,093.30
20	460-735	908.00	460-927	2,109.50
25	460-740	962.60	460-928	3,122.60

HARD MASTER JAWS				
Chuck Dia.	3-Jaw Code #	Price \$	6-Jaw Code #	Price \$
5	467-355	164.30	467-505	345.00
6	467-360	197.70	467-510	372.90
8	467-365	203.90	467-515	415.90
10	467-370	280.90	467-520	535.90
12	467-375	355.20	467-525	726.00
16	467-380	518.10	460-527	1,306.10
20	467-385	886.90	460-529	2,483.50
25	467-390	956.40	460-530	3,672.70

SOFT TOP JAWS				
Chuck Dia.	3-Jaw Code #	Price \$	6-Jaw Code #	Price \$
5	465-105	21.90	-	-
6	465-110	25.80	467-532	41.60
8	465-115	29.20	467-534	46.60
10	465-120	42.50	467-536	66.30
12	465-125	57.50	467-538	83.40
16	465-130	74.20	467-540	115.40
20	465-135	110.70	-	-
25	465-140	145.20	-	-



O.D. Hard Solid Jaws

Sold in sets



I.D. Hard Solid Jaws

Sold in sets



Soft Solid Jaws

Sold in sets

O.D. HARD SOLID JAWS				
Chuck Dia.	3-Jaw Code #	Price \$	6-Jaw Code #	Price \$
4	467-708	123.80	-	-
5	467-710	131.50	467-915	319.60
6	467-715	151.40	467-916	302.70
8	467-720	161.60	467-918	250.80
10	467-725	199.80	467-920	399.50
12	467-730	328.60	467-922	513.40
16	467-735	381.10	467-923	1,074.50
20	467-740	636.90	-	-
25	467-745	1,049.20	-	-

I.D. HARD SOLID JAWS				
Chuck Dia.	3-Jaw Code #	Price \$	6-Jaw Code #	Price \$
4	467-605	92.90	-	-
5	467-610	131.50	467-939	500.70
6	467-615	151.40	467-940	302.70
8	467-620	161.60	467-942	323.20
10	467-625	200.50	467-944	399.50
12	467-630	328.60	467-946	513.40
16	467-635	381.10	467-947	1,074.50
20	467-640	789.40	-	-
25	467-645	1,049.20	-	-

SOFT SOLID JAWS		
Chuck Dia.	Code #	Price \$
4	467-750	76.40
5	467-755	86.10
6	467-760	99.80
8	467-765	114.70
10	467-770	145.20
12	467-775	231.10
16	467-780	250.90
20	467-785	557.00
25	467-790	664.70



Camlock Studs

CAMLOCK STUDS				
Taper Size	Camlock Studs Dia.	Thread	Code #	Price \$
D1-3	9/16"	M10 X 1	467-230	18.40
D1-4	5/8"	M10 X 1	467-232	21.50
D1-5	3/4"	M12 X 1	467-234	24.50
D1-6	7/8"	M16 X 1.5	467-236	28.60
D1-8	1"	M20 X 1.5	467-238	31.30
D1-11	1-3/16"	M22 X 1.5	467-240	35.50
D1-15	1-3/8"	M24 X 1.5	467-241	140.20



DIN Studs

DIN STUDS				
Taper Size	Thread mm	Qty. per Set	Code #	Price \$
C - 4	M10 - 39	3	467-277	17.50
C - 5	M10 - 43	4	467-279	18.30
C - 6	M12 - 50	4	467-280	13.90
C - 8	M16 - 60	4	467-282	27.60
C - 11	M20 - 75	6	467-284	24.20