

# GS MODULAR VISES

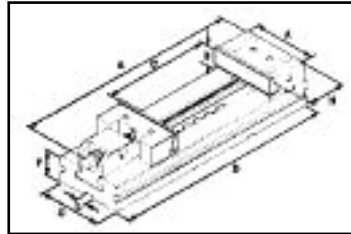
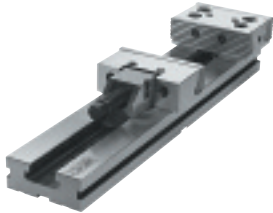


## GS MODULAR VISES

Manufactured under rigid quality control. Only the most suitable materials are used, and the accuracy of even the smallest components is assured. As a result of the high standard construction, GS can be depended upon to maintain their accuracy under the most severe operating conditions. The modular design and the concept of interchangeability makes possible a wide variety of set up combinations.

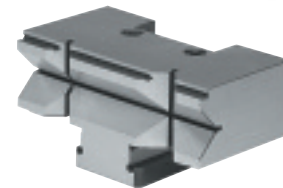
### Features/Benefits:

- High accuracy
- Unlimited clamping range
- High quality alloy steel
- High clamping pressure
- No length of height limitations
- No jaw lift
- Low profile
- All vises are matched
- Mechanical and hydraulic blocking devices



### PRISMATIC JAW

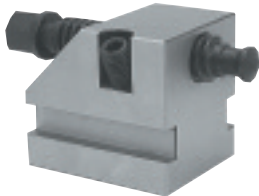
Model No.	Code No.	Price \$
#3	382-890	403.50
#4	382-892	537.90
#5	382-894	672.40



## GS MODULAR VISES

Model	Width A	Height B	Opening C	D	E	F	G	H	I	KG.	Code No.	Price \$
1	4	1.2	4	10.8	12.8	1.4	3	3.06	.64	6.8	382-005	1,008.50
2	5	1.6	6	13.8	16.4	1.6	3.8	3.04	.64	12.9	382-010	1,075.70
3	6	2	8	16.8	20.86	2	5	3.574	.64	25.5	382-015	1,311.00
4	7	2.4	8	17.91	24.80	.32	5.8	3.876	.64	37	382-020	1,848.80
4	7	2.4	12	21.85	24.80	.32	5.8	3.876	.64	42	382-025	2,016.80
4	7	2.4	16	25.78	24.80	.32	5.8	3.876	.64	47	382-030	2,283.20
4	7	2.4	20	29.72	24.80	.32	5.8	3.876	.64	52	382-032	2,689.00
5	8	2.6	8	22.9	28.74	2.8	6.8	4.536	.64	64	382-035	2,346.60
5	8	2.6	12	26.8	28.74	2.8	6.8	4.536	.64	69	382-040	2,473.30
5	8	2.6	16	30.7	28.74	2.8	6.8	4.536	.64	74	382-045	2,727.00
5	8	2.6	20	34.6	28.74	2.8	6.8	4.536	.64	79	382-050	3,107.50
5	8	2.6	24	38.6	28.74	2.8	6.8	4.536	.64	84	382-052	4,100.60
6	12	3.2	8	24.8	32.67	3.07	7.67	4.74	.64	95	382-055	3,730.80
6	12	3.2	12	28.7	32.67	3.07	7.67	4.74	.64	105	382-060	4,134.20
6	12	3.2	16	32.7	32.67	3.07	7.67	4.74	.64	115	382-065	4,840.00
6	12	3.2	20	36.6	32.67	3.07	7.67	4.74	.64	125	382-070	5,327.00
6	12	3.2	24	40.5	32.67	3.07	7.67	4.74	.64	135	382-075	5,814.80
6	12	3.2	28	44.5	32.67	3.07	7.67	4.74	.64	145	382-080	6,757.30
6	12	3.2	32	48.5	32.67	3.07	7.67	4.74	.64	155	382-085	7,528.90

## ACCESSORIES



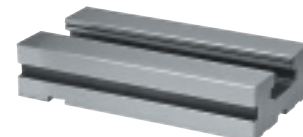
**Mechanical  
Blocking Device**



**Hydraulic  
Blocking Device**



**Swivel Base Only**



**Extension Base**

## SOFT JAW ASSEMBLY

Model No.	Code No.	Price \$
#3	382-895	375.40

## ACCESSORIES

Model No.	Code No.	Price \$	Model No.	Code No.	Price \$	Model No.	Code No.	Price \$	Model No.	Code No.	Price \$
#1	382-470	235.40	#3	382-750	3,160.00	#1	382-380	470.70	#1	382-260	537.90
#2	382-475	242.10	#4	382-755	3,160.00	#2	382-385	537.90	#2	382-265	605.20
#3	382-480	269.00	#5	382-760	3,160.00	#3	382-390	638.80	#3	382-270	672.40
#4	382-485	279.30	#6	382-765	2,846.00	#4	382-395	706.00	#4	382-275	739.60
#5	382-490	330.20				#5	382-400	941.20	#5	382-280	927.80
#6	382-495	504.30				#6	382-405	1,176.50	#6	382-285	1,143.00