



MODULAR VISE

Features/Benefits

- High accuracy
- No length or height limitations
- Unlimited clamping range
- No jaw lift
- High quality alloy steel
- Low profile
- High clamping pressure
- All vises are matched
- Mechanical and pneumohydraulic blocking devices



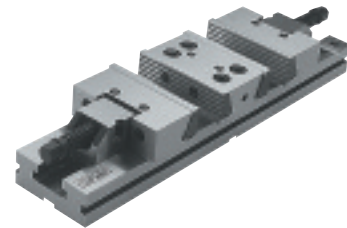
MODULAR VISE

Model No.	Max. Opening	Overall Length	Jaw Width	kg	Code No.	Price \$
SINGLE OPENING MODULAR VISE						
1	11.4	18	4	10	382-101	1,311.00
2	12.6	20.5	5	17	382-102	1,714.30
3	14.7	23	6	31	382-103	2,184.80
3	18.11	27	6	34	382-104	2,487.30
4	16	26	7	46	382-105	2,420.10
4	20	30	7	51	382-106	2,756.20
5	24	36	8	92	382-110	4,302.30

DOUBLE OPENING MODULAR VISE

Features/Benefits

- High accuracy
- No length or height limitations
- Unlimited clamping range
- No jaw lift
- High quality alloy steel
- Low profile
- High clamping pressure
- All vises are matched
- Mechanical and pneumohydraulic blocking devices



DOUBLE OPENING MODULAR VISE

Model No.	Max. Opening	Overall Length	Jaw Width	kg	Code No.	Price \$
DOUBLE OPENING MODULAR VISE						
3	2 x 4.3	23	6	38	382-153	2,530.40
3	2 x 6.3	27	6	41	382-154	2,727.00
4	2 x 6.7	30	7	63	382-156	3,159.50
5	2 x 10	40	8	107	382-172	5,943.30
6	2 x 6.3	35	12	154	382-175	7,429.10
6	2 x 16	55	12	194	382-180	12,723.80