

GS MILLING VISES



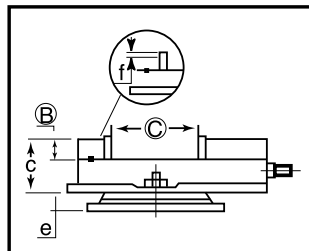
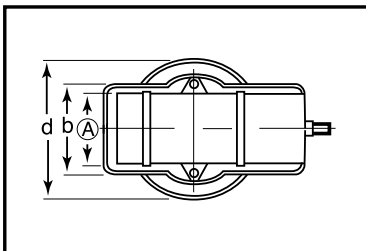
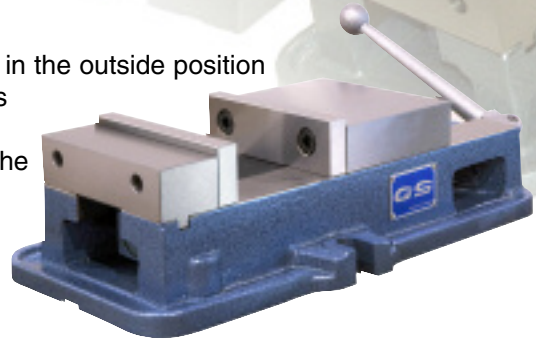
GS-890 VISE

A brand new vise, bears two major features: a 8.9" opening and a new stationary jaw.

- An integral key and large fasteners reduces deflection by 50%
- All these make the GS 890" vise an industrial standard accessory

Features:

- 4 jaw plate positions allow extra capacity with the jaw plates in the outside position
- The swivel base is graduated 360° in one degree increments
- Chips cover protect leadscrew from damage
- The other quality movable jaw does not lift off the bed, and the deflection of the stationary jaw is minimized



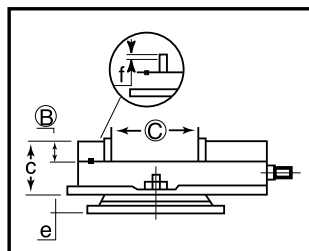
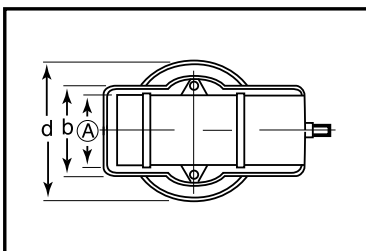
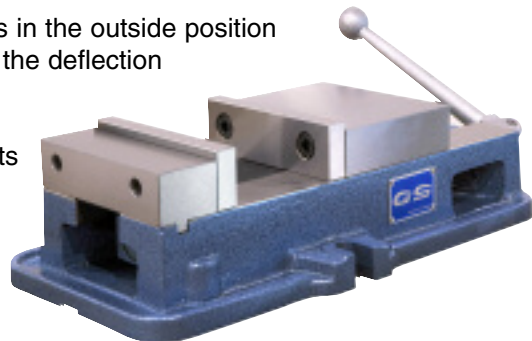
■ GS-890 VISE		
Description	Code No.	Price \$
GS890 vise	327-290	638.90
Swivel base only	327-280	149.10

Model	A	B	C	O.A.L.	b	c	d	e	f	Plain (Ship Wt. lb/kg)
GS 890	6	1.5	8.9	17.2	8.3	4.6	12	1.7	0.2	80
	153	38	226	437	210	118	305	42	6	36
CAPACITY	I		II		III		IV			
GS-890	8.89"		11.65"		14.44"		17.24"			
	226		296		367		438			

GS-675 VISE

Features:

- 7.5" opening
- 4 jaw plate positions allow extra capacity with the jaw plates in the outside position
- The other quality movable jaw does not lift off the bed, and the deflection of the stationary jaw is minimized
- Chips cover protect leadscrew from damage
- The swivel base is graduated 360° in one degree increments



■ GS-675 VISE		
Description	Code No.	Price \$
GS 6" vise	327-275	565.80
Swivel base only	327-280	149.10
Replacement Handle	327-285	64.00

Model	A	B	C	O.A.L.	b	c	d	e	f	Plain (Ship Wt. lb/kg)
GS 6"	6	1.77	7.5	17.2	9.13	4.6	12	1.65	0.39	80
	152	45	191	435	232	117	305	42	10	36
CAPACITY	I		II		III		IV			
GS-6"	7-1/2		10-1/4		13-1/8		15-7/8			
	191		260		333		400			