



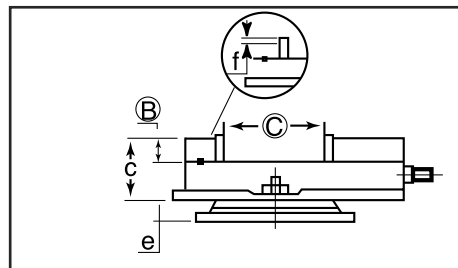
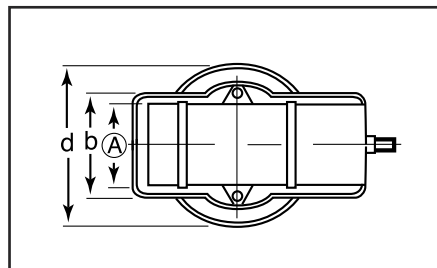
### PRECISION MILLING VISES

#### Jaw Plate Positions

Lock-Well vises have these other quality features:

- 4 Jaw Plate positions allowing extra capacity with the jaw plates in the outside position
- The other quality movable jaw does not lift off the bed, and that deflection of the stationary bed is minimized
- The lead screw is enclosed for maximum protection
- The swivel base is graduated 360 degrees in one degree increments

#### Lock-Well Milling Machine Vise ATW-40, 50, 60, 80

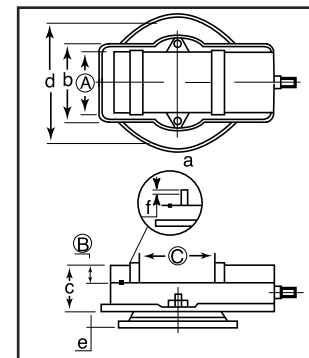


#### Dimensions:

PRECISION MILLING VISES															
Model No.	A	B	C	Over all Length	b	c	d	e	f	Weight Plain Kg	Plain Base Code No.	Price \$	Weight with Base Kg	Swivel Base Code No.	Price \$
ATW-40	100	32	104	320	165	89	245	32	6.5	16	327-100	471.50	20	327-105	593.20
ATW-50	125	38	130	370	194	97	254	35	8	25	327-110	562.70	32	327-115	684.40
ATW-60	150	44	146	425	210	117	300	41	9.5	36	327-120	654.00	48	327-125	806.10
ATW-80	200	57	200	552	295	141	380	47	11	70	327-130	1,399.20	100	327-135	1,657.80

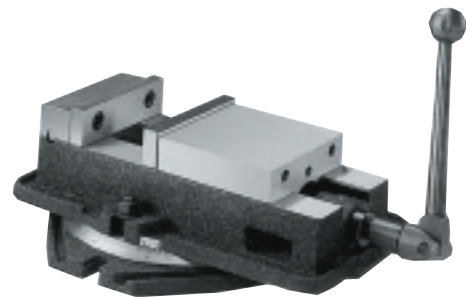
#### Dimensions

Capacity					
Model No.	Capacity	I	II	III	IV
ATW-40	100	104	150	218	267
ATW-50	125	130	178	262	318
ATW-60	150	146	202	305	368
ATW-80	200	200	280	395	476



#### MILLING VISE

Model No.	Code No.	Price \$
<b>SWIVELS ONLY</b>		
4"	326-423	51.60
6"	326-427	68.40
8"	326-433	145.70



MILLING VISE													
Model No.	A	B	C	O.A.L	b	c	d	e	With Swivel	Price \$	Without Swivel	Price \$	
CH-4	4	1-1/8	4	12-9/16	6-1/2	3-1/2	9-3/4	1-1/4	326-405	383.50	326-420	363.20	
CH-6	6	1-1/2	5-3/4	16-3/4	8-1/4	4-3/8	11-3/4	1-5/8	326-410	456.10	326-425	412.60	
CH-8	8	2	8	21-3/4	11-5/8	5-5/16	15	1-7/8	326-415	976.10	326-430	929.60	