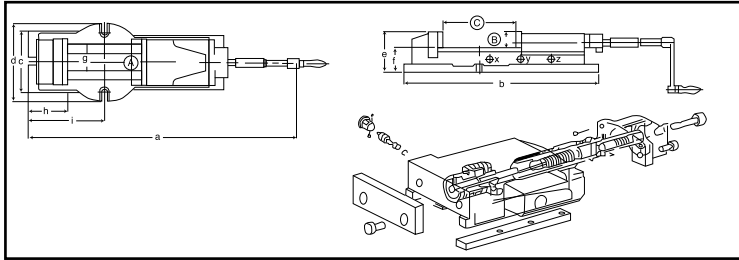



LOCK-WELL PRECISION HYDRA POWER MACHINE VISES
Hydraulic Booster System

Hydraulic Booster provides a steady clamping force against shocks and vibrations during the operations, since it fastens the work piece resiliently with an aid of the disc-springs mounted inside. (see fig. A)


Seal Kits :

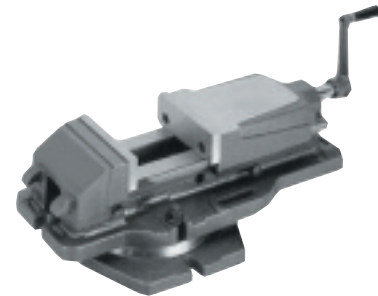
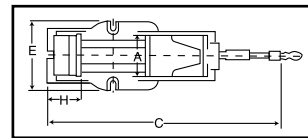
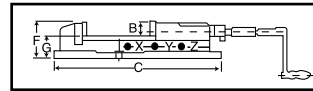
HP40: Code No. 327-201
 HP50: Code No. 327-211
 HP60: Code No. 327-221
 HP80: Code No. 327-231

Dimensions:
LOCK-WELL PRECISION HYDRA POWER MACHINE VISES

Model No.	A	B	C	a	b	c	d	e	f	g	h	i	Clamp Force	Wt. (kg) Plain	Code No.	Price \$	Wt (kg)		Code No.	Price \$
																	Swivel Base	Code No.		
HP-40G	100	36	170	525	430	130	160	94	60	78	100	155	2500	16	327-200	1,247.10	6	327-205	1,338.40	
HP-50G	125	46	220	670	540	165	185	118	72	97	117	185	3500	32	327-210	1,264.70	10	327-215	1,477.10	
HP-60G	150	51	300	800	620	200	240	133	82	116	125	247	4400	54	327-220	1,305.70	16	327-225	1,528.50	
HP-60G-2S	480	51	300	800	620	330	550	138	88	116	125	247	4400	136	327-227	3,881.52				
HP-60G-3S	600	51	300	800	630	220	660	138	88	116	125	247	4400	185	327-228	5,754.24				
HP-80G	200	62	300	900	700	240	280	162	100	160	165	266	6600	95	327-230	2,433.30	30	327-235	2,737.50	

HYDRAULIC MACHINE VISE

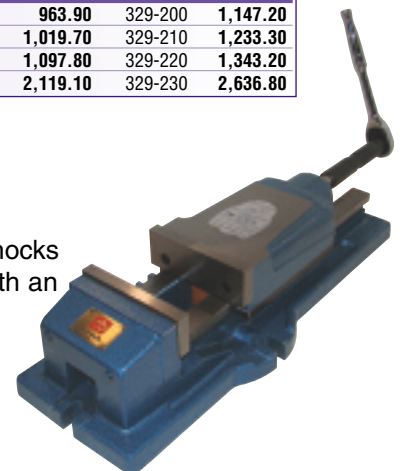
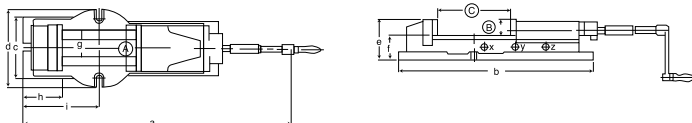
- Ruggedly constructed for milling, drilling, shaping, grinding and many other machine shop applications
- Body is made of high quality ductile cast iron, resists deflection or bending


HYDRAULIC MACHINE VISE

Model No.	A	B	C	D	E	F	G	H	I	J	K	L	Max. Clamp Force	G.W. (kg)	Plain Base		Swivel Base	
															Code No.	Price \$	Code No.	Price \$
VH-4	100	36	170	525	430	130	160	94	60	78	100	155	2500kg	22	329-205	963.90	329-200	1,147.20
VH-5	127	46	220	670	540	165	185	118	72	97	117	185	4500kg	45	329-215	1,019.70	329-210	1,233.30
VH-6	150	51	300	800	620	200	240	133	82	116	125	247	6000kg	64	329-225	1,097.80	329-220	1,343.20
VH-8	200	65	300	800	710	228	280	158	100	161	180	270	8500kg	109	329-235	2,119.10	329-230	2,636.80

MECHANICAL POWER MACHINE VISES
Mechanical Power Booster System

The Ball-Design mechanical booster provides steady clamping forces against shocks and vibrations. It helps vises clamp work pieces resiliently, during operations, with an aid of the inside-mounted disc-spring.


MECHANICAL POWER MACHINE VISES

Model No.	A	B	C	a	b	c	d	e	f	g	h	i	Clamp Force	Wt. (kg) Plain	Code No.	Price \$	Wt (kg)		Code No.	Price \$
																	Swivel Base	Code No.		
HP-60 II	150	51	300	800	620	200	240	133	82	116	125	247	4400	54	327-240	1,305.70	16	327-245	182.60	