

DRILL PRESS VISES



DRILL PRESS VISES

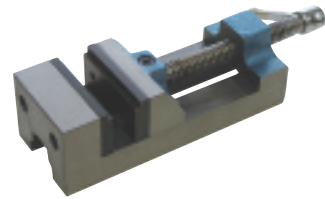
- High tensile iron casting
- Cold rolled screw thread
- Plain jaws of special steel



■ DRILL PRESS VISES						
Width of Jaws	Opening (In.)	Depth of Jaws	Weight lbs.	Code No.	Price \$	
3	3	1-1/8	6	370-206	36.70	
4	4	1-3/8	10	370-211	46.40	
5	5	1-1/2	17-1/2	370-216	71.80	
6	6	1-1/2	23	370-221	95.70	

DRILL PRESS VISE P250

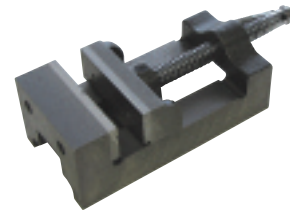
- High tensile iron casting
- Jaw plates – one grooved and one plain
- Accurate machining and assembling
- Four sides and one end machined



■ DRILL PRESS VISE P250						
Width of Jaws	Depth of Jaws	Opening (In.)	Length	Weight lbs.	Code No.	Price \$
2-1/2	1-1/2	2-9/16	7-1/4	5-1/2	370-226	51.30

DRILL PRESS VISE P130

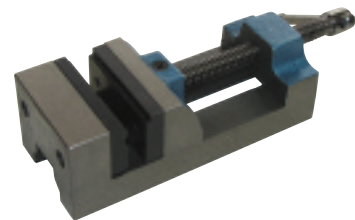
- A groove on each side – easy clamping to machine table
- Precision cut Acme thread and hexagonal screw head



■ DRILL PRESS VISE P130						
Width of Jaws	Depth of Jaws	Opening (In.)	Length	Weight lbs.	Code No.	Price \$
3	1-3/4	3	9-1/4	9-3/4	370-231	57.50

DRILL PRESS VISE P350 AND P400

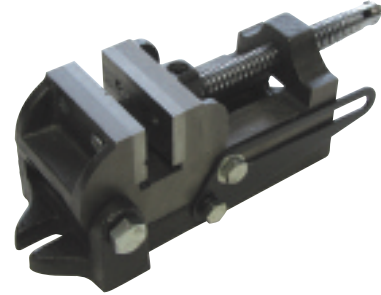
- Rugged 3 inch and 4 inch
- Precision cut Acme thread screw
- Hexagonal screw head for tight clamping



■ DRILL PRESS VISE P350 AND P400						
Width of Jaws	Depth of Jaws	Opening (In.)	Length	Weight lbs.	Code No.	Price \$
3	1-3/4	3	9-1/4	9-3/4	370-236	60.30
4	1-3/4	4	10-3/4	17	370-241	94.10


DRILL PRESS VISES
Drill Press Vise P250A

- One grooved and one plain jaw plates
- Full 90 degrees adjustment, horizontal to vertical
- Two bolt lugs on the base for setting on machine table



■ DRILL PRESS VISE P250A						
Width of Jaws	Depth of Jaws	Opening (In.)	Length	Weight lbs.	Code No.	Price \$
2-1/2	1-1/2	2-1/2	9	10	370-251	47.90

Drill Press Vises

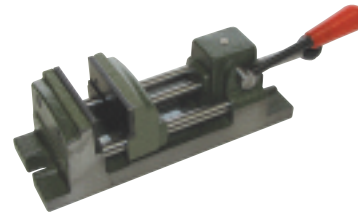
- Steel jaws
- Lead screw with precision cut
- Rugged cast iron construction



■ DRILL PRESS VISES						
Width of Jaws	Depth of Jaws	Opening (In.)	Length	Weight lbs.	Code No.	Price \$
3	13/16	2-3/4	11	8.8	372-105	88.67
4	13/16	3-1/4	12	10	372-110	115.24

PISTON VISE
Model V-75 and V-100

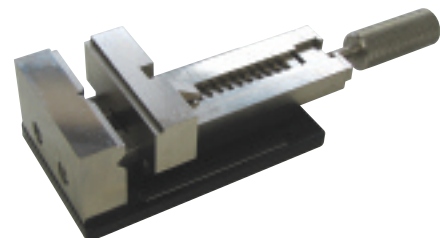
- Easy and speedy
- Quick grip drill press vises



■ PISTON VISE										
Model No.	A (MAX.)	B	C	D	E	Width of Jaws	Depth of Jaws	Opening (In.)	Code No.	Price \$
V-75	76	70	240	80	18	3	1-1/4	3	326-485	324.50
V-100	110	80	302	105	18	4	1-15/16	4-11/16	326-490	385.90

QUICK ACTING VISE

- Made in Europe
- Steel jaws
- Grooved jaws
- Highest quality
- Precision cut lead screw



■ QUICK ACTING VISE				
Model No.	Width of Jaws	Opening (In.)	Code No.	Price \$
JK-100	4	4	372-111	211.70



HEAVY DUTY DRILL PRESS VISE

- A vise designed especially for the professionals who require a heavy vise
- Manufactured from close grained cast iron, this vise offers a ground vise bed for smooth & consistent jaw movement
- Jaws are hardened & ground with cross-patterned 90° V-grooves in the stationary jaw facilitating holding of round jobs both horizontally & vertically
- Rugged design makes these vises perfect for even the most difficult drilling, tapping & reaming operations



HEAVY DUTY DRILL PRESS VISE

Model No.	Width of Jaws	Opening (In.)	Depth of Jaws	Code No.	Price \$
DPV/60/BU	2.7/16	2.11/16	1	370-900	147.90
DPV/80/BU	3.3/16	3.1/2	1	370-905	239.30
DPV/100/BU	4	4	1.1/4	370-910	267.60
DPV/120/BU	4.3/4	5.13/16	1.11/16	370-915	457.60
DPV/150/BU	6	6.5/8	2	370-920	598.20

UNIGRIP DRILL PRESS VISE

- Manufactured from graded cast iron, these vises have a precision ground base and vise bed for smooth lateral movement of the movable jaw.
- Longitudinal and transversal prisms in the fixed jaw allow for firm gripping of round jobs of different sizes both horizontally and vertically. Special seat in jaws facilitates retaining of flat work pieces.
- Vises are equipped with a convenient unigrip mechanism. Spindle moves inside the hollow hand grip allowing the vise to be used at a location away from the table edge. This feature increases the scope of application of this range of vises.
- This vise is also available with 3 mounting options via 2 additional precisely ground surfaces: end face and side face. This allows for drilling along all axes with a single setting of the job and holding of long work-pieces which are cumbersome and difficult to manage in regular vises.



UNIGRIP DRILL PRESS VISE

Model No.	Width of Jaws	Opening (In.)	Depth of Jaws	Code No.	Price \$
DPV/UG-75	3	2-3/4	13/16	370-925	97.80
DPV/UG-100	4	3-1/2	13/16	370-930	114.20
DPV/UG-125	5	4-15/32	1-3/8	370-935	173.80
3 WAY Drill Press Vise					
DPV/UG/3/100	4	3-1/2	13-16	370-940	154.80

UNIGRIP DRILL PRESS VISE

- Manufactured from SG Iron makes them amongst the strongest vises in the market - virtually unbreakable.
- Only Drill Vise that can also be used as a milling vice
- Equipped with long mounting slots for easy adjustment on the machine table
- Fixed jaw has horizontal and vertical V slots for holding round jobs
- Both jaws have a seat for retaining flat & low height work pieces
- Movable steel jaw is supported by a jaw seat imparting rigidity and further strength



SG IRON DRILL PRESS VISE

Model No.	Width of Jaws	Opening (In.)	Code No.	Price \$
DPV/SG-80	3-3/16	3-9/64	370-945	117.40
DPV/SG-100	4	3-3/4	370-950	199.59
DPV/SG-120	4-15/32	4-3/8	370-955	252.83
DPV/SG-140	5-9/16	6	370-960	292.79