



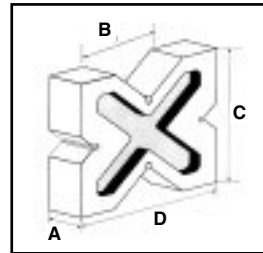
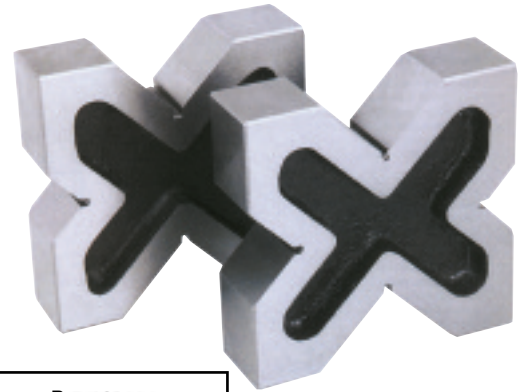
4 WAY VEE BLOCKS - CAST IRON

Made from close grained cast iron, these Vee Blocks are precisely ground and machined square and parallel.

Each Block incorporates four different sized Vee's thereby supporting a wide range of sizes.

Manufactured and supplied in matched and numbered pairs, these are very useful for marking and checking of cylindrical parts.

The larger sizes incorporate a cavity on either side for convenience in handling during usage.



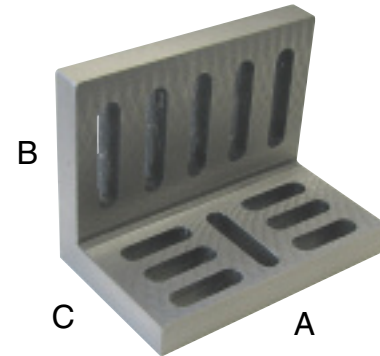
■ 4 WAY VEE BLOCKS - CAST IRON										
Thickness (A)		Width of Block (D)		Height (C)		Vee Capacity (B)		Model No.	Code No.	Price \$
Inch	mm	Inch	mm	Inch	mm	Inch	mm			
1-3/8	35	3-3/4	95	2-3/4	70	3/4 x 1-3/16 x 1-19/16 x 2	20 x 30 x 40 x 50	VB/QD/95-70-35	231-116	90.60
1-3/16	30	4	100	4	100	3/4 x 1-3/16 x 1-9/16 x 2	20 x 30 x 40 x 50	VB/QD/100-100-30	231-118	97.80
1-3/8	35	4-3/4	120	4-3/4	120	1-3/16 x 1-9/16 x 2 x 2-3/8	30 x 40 x 50 x 60	VB/QD/120-120-35	231-120	133.20

SLOTTED ANGLE PLATES - WEBBED AND OPEN

Made of high-tensile cast iron seasoned against distortion, skillfully machined square and parallel, these plates are supplied in two types, Type A and Type B, the latter having side webs.

Type A-Webbed: Machined on outside surfaces and edges only.

Type B-Opened: Machined all over, except slots.



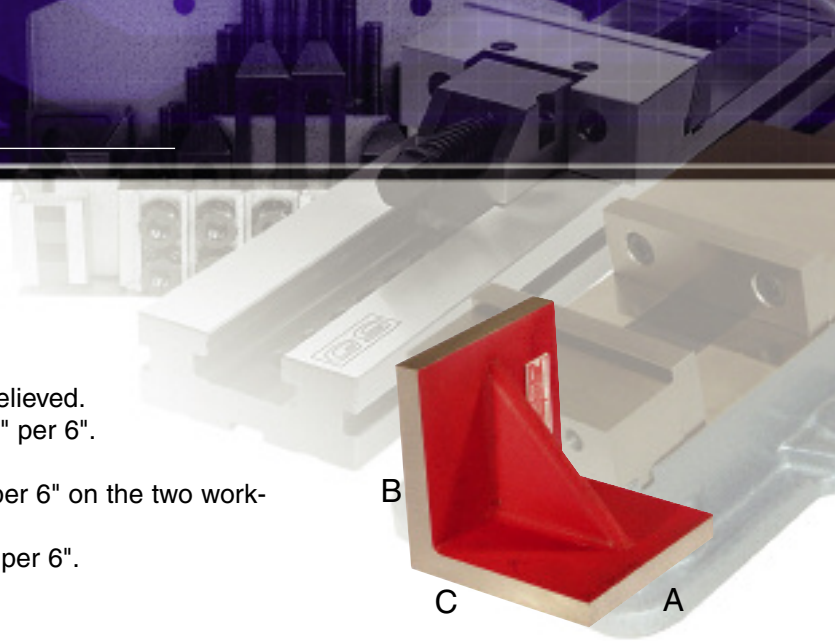
**QUALITY
IMPORT**

■ SLOTTED ANGLE PLATES - WEBBED AND OPEN									
A	Size (in)		C	Code No.	Webbed Price \$	Code No.	Open Price \$		
	B								
3	2-1/2		2	370-306	40.70	-	-		
3-1/2	3		2-1/2	370-311	50.20	-	-		
4-1/2	3-1/2		3	370-316	63.80	370-356	79.70		
6	5		4-1/2	370-321	100.40	370-361	116.40		
7	5-1/2		4-1/2	370-326	121.20	370-366	146.60		
8	6		5	370-331	155.40	370-371	169.70		
9	7		6	370-336	192.10	370-376	235.10		
10	8		6	370-341	237.50	370-381	266.10		
12	9		8	370-346	361.80	370-386	401.60		



PLAIN ANGLE PLATES - WEBBED

- Made of high quality fine grained cast iron, stress relieved.
- All ends machined square and parallel within 0.002" per 6".
- Extra thick and ribbed construction.
- Ground finish - square and parallel within 0.0005" per 6" on the two working faces only.
- Machined finish - square and parallel within 0.002" per 6".

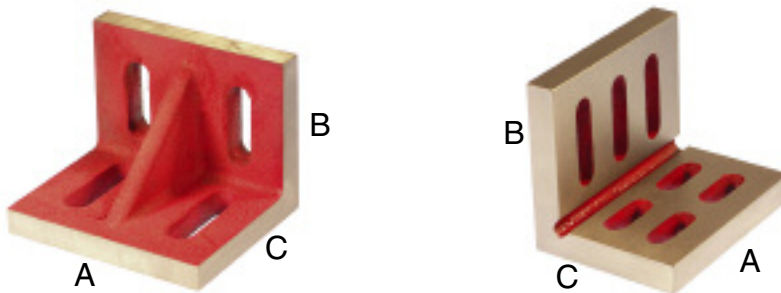


PLAIN ANGLE PLATES - WEBBED											
Model No.		Size (in)			Wall Thickness	No. of Webs	Weight (lb)	Machined		Ground	
Machined	Ground	A	B	C				Code No.	Price \$	Code No.	Price \$
PAW-020202	PAW-020202-G	2	2	2	1/2	1	251-568	52.70	251-584	108.40	
PAW-030303	PAW-030303-G	3	3	3	1/2	1	251-570	57.60	251-586	121.50	
PAW-040404	PAW-040404-G	4	4	4	5/8	1	251-572	93.60	251-588	165.80	
PAW-050505	PAW-050505-G	5	5	5	11/16	1	251-574	136.30	251-590	262.70	
PAW-060606	PAW-060606-G	6	6	6	3/4	1	251-576	193.80	251-592	389.10	
PAW-080808	PAW-080808-G	8	8	8	7/8	2	251-578	339.80	251-594	585.90	
PAW-101010	PAW-101010-G	10	10	10	1"	2	251-580	746.80	251-596	1,153.80	
PAW-121212	PAW-121212-G	12	12	12	1-1/8	2	251-582	792.80	251-598	1,642.90	



SLOTTED ANGLE PLATES - WEBBED AND OPEN

- Made of high quality cast iron, stress relieved.
- Webbed type - 2 faces and all ends machined square and parallel within 0.002 per 6".
- Clamping slots for easy mounting of workpiece.
- Open end type - 4 faces and all ends machined square and parallel within 0.002" per 6".

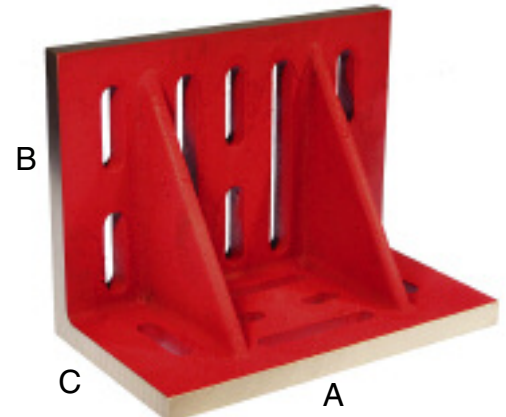


SLOTTED ANGLE PLATES - WEBBED AND OPEN														
Model No.		Size (in)			Wall Thickness		Weight		Slots		Webbed		Open	
Webbed	Open	A	B	C	Webbed	Open	Webbed	Open	Webbed	Open	Code No.	Price \$	Code No.	Price \$
SAW-030302	N/A	3-1/2	3	2-1/2	1/2	N/A	4	N/A	(4) 7/16	N/A	251-600	98.50	-	-
SAW-040303	SAO-040303	4-1/2	3-1/2	3	1/2	5/8	5	4	(4) 9/16	(4) 9/16	251-602	100.20	251-616	133.10
SAW-060504	SAO-060504	6	5	4-1/2	11/16	13/16	13	12	(4) 11/16	(7) 9/16	251-604	133.10	251-618	187.20
SAW-070504	SAO-070504	7	5-1/2	4-1/2	11/16	13/16	14	14	(4) 11/16	(8) 9/16	251-606	182.20	251-620	220.00
SAW-080605	SAO-080605	8	6	5	3/4	15/16	22	20	(4) 9/16	(8) 9/16	251-608	225.00	251-622	259.40
SAW-090706	SAO-090706	9	7	6	3/4	15/16	28	24	(4) 11/16	(13) 11/16	251-610	279.10	251-624	321.80
SAW-100806	SAO-100806	10	8	6	7/8	1-1/16	35	33	(4) 11/16	(13) 11/16	251-612	330.00	251-626	397.30
SAW-120908	SAO-120908	12	9	8	1"	1-3/16	60	50	(4) 11/16	(13) 13/16	251-614	505.60	251-628	561.40

GIANT SLOTTED WEBBED ANGLE PLATES

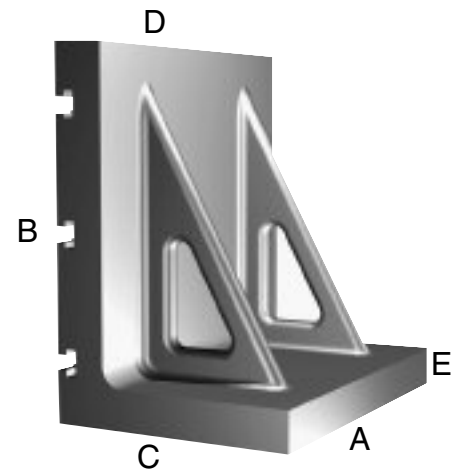
- Made of high quality fine grained cast iron, stress relieved.
- Machined finish - square and parallel within 0.002" per 6".
- Extra thickness and heavy ribbed construction.
- Multiple slots for many bolting and clamping possibilities.

GIANT SLOTTED ANGLE PLATES - WEBBED							
Model No.	Size (in)			Wall Thickness	Weight (lb)	Code No.	Price \$
	A	B	C				
GAW-161209	16	12	9	1-1/8	112	251-630	863.40
GAW-201612	20	16	12	1-1/8	200	251-632	1,242.40
GAW-122418	12	24	18	1-1/2	300	251-634	3,144.60
GAW-183024	18	30	24	1-3/4	700	251-636	6,111.70


GIANT T-SLOTTED WEBBED ANGLE PLATES

- Provides an accurate vertical base for mounting vises, sub-plates, parts or fixtures.
- Standard 5/8" T-slots on a 6" grid pattern are provided on both faces.
- Made from one piece, class 40 cast iron that has been stress relieved.
- Extra heavy 2-1/2" wall thickness provides stability during milling operations.
- Faces and edges machined flat, square and parallel within 0.001" per 12".

GIANT T-SLOTTED ANGLE PLATES - WEBBED								
Model No.	Size (in)					Weight (lb)	Code No.	Price \$
	A	B	C	D	E			
TAP-121818	18	18	12	2-1/2	2	450	251-638	6,372.70
TAP-122424	24	24	12	2-1/2	2	700	251-640	7,270.40



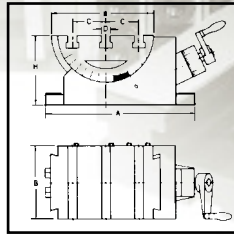
ANGLE PLATES & ARBOR PRESSES



ADJUSTABLE SWIVEL ANGLE PLATE

Special Features:

- The CL Adjustable Swivel Angle Plate is mainly used for precise angle finishing, suitable for wide purposes



Models CL-1, CL-2

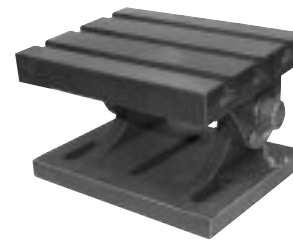
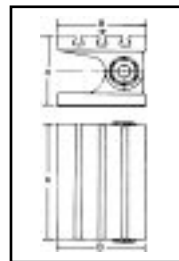
ADJUSTABLE SWIVEL ANGLE PLATE

Model No.	A	a	B	C	D	H	T Groove Number	Code No.	Price \$
CL-1	252	180	125	55	14	115	3	326-126	807.10
CL-2	300	240	180	65	16	150	3	326-128	732.78

SWIVEL ANGLE PLATE

BRE-200, BRE-300

Special design for angle setting on various machine tools.



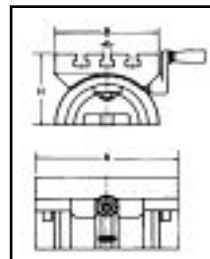
SWIVEL ANGLE PLATE

Model No.	B	Table A	H	T-Slot e	Approx. Weight (kg)	Code No.	Price \$
BRE-200	150	200	120	10	12	326-114	398.70
BRE-300	255	300	190	14	47.5	326-118	769.60

ANGLE PLATE

BRA-180 BRA-250 BRA-380

- Low profile
- Micro reading 5 min.
- Adjustable 45° each side
- Special design for angle setting on various machine tools



ANGLE PLATE

Model No.	B	Table A	H	T-Slot e	Approx. Weight (kg)	Code No.	Price \$
BRA-180	130	180	91	10	7.5 kg	326-120	517.90
BRA-250	178	250	133	12	22.5 kg	326-122	764.90
BRA-380	260	380	185	16	69 kg	326-124	1,171.10

ARBOR PRESSES

ARBOR PRESSES

Capacity Ton	Shipping Wt. (lbs)	Throat Depth (in)	Height of Press	Base Dimension	Largest Arbor	Size	Length	Stroke	Code No.	Price \$
ARBOR PRESS										
1/2	22	2-7/8	10	4 x 9-1/2	1-1/8	3/4 x 3/4	7-1/2	4-1/2	326-090	83.80
1	37	3-1/4	12	5 x 11	1-3/8	1 x 1	9-1/2	5-1/4	326-092	120.90
2	86	5	17	6-3/4 x 17	1-3/4	1-1/4 x 1-1/4	14	8-1/2	326-094	305.50
3	152	5-3/4	21-1/2	8 x 18	2-1/2	1-1/2 x 1-1/2	18	12-1/2	326-096	483.60
5	308	8-3/4	35-3/4	10 x 26-3/4	3-1/4	2 x 2	26-3/4	18-1/8	326-098	1,434.00

Capacity Ton	Shipping Wt. (lbs)	Throat Depth (in)	Height of Press	Base Dimension	Max. Height	Largest Arbor	Size	Length	Stroke	Code No.	Price \$
RATCHET TYPE ARBOR PRESS											
3	152	5-3/4	21-1/2	8 x 18	12-1/2	2-1/2	1-1/2 x 1-1/2	18	12-1/2	326-099	511.90

