

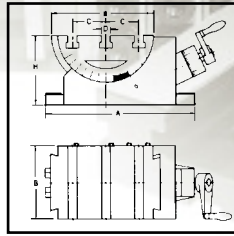
# ANGLE PLATES & ARBOR PRESSES



## ADJUSTABLE SWIVEL ANGLE PLATE

### Special Features:

- The CL Adjustable Swivel Angle Plate is mainly used for precise angle finishing, suitable for wide purposes



Models CL-1, CL-2

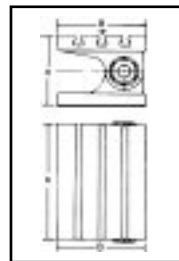
## ADJUSTABLE SWIVEL ANGLE PLATE

Model No.	A	a	B	C	D	H	T Groove Number	Code No.	Price \$
CL-1	252	180	125	55	14	115	3	326-126	807.10
CL-2	300	240	180	65	16	150	3	326-128	732.78

## SWIVEL ANGLE PLATE

### BRE-200, BRE-300

Special design for angle setting on various machine tools.



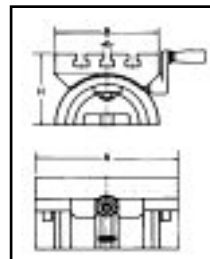
## SWIVEL ANGLE PLATE

Model No.	B	Table A	H	T-Slot e	Approx. Weight (kg)	Code No.	Price \$
BRE-200	150	200	120	10	12	326-114	398.70
BRE-300	255	300	190	14	47.5	326-118	769.60

## ANGLE PLATE

### BRA-180 BRA-250 BRA-380

- Low profile
- Micro reading 5 min.
- Adjustable 45° each side
- Special design for angle setting on various machine tools



## ANGLE PLATE

Model No.	B	Table A	H	T-Slot e	Approx. Weight (kg)	Code No.	Price \$
BRA-180	130	180	91	10	7.5 kg	326-120	517.90
BRA-250	178	250	133	12	22.5 kg	326-122	764.90
BRA-380	260	380	185	16	69 kg	326-124	1,171.10

## ARBOR PRESSES

### ARBOR PRESSES

Capacity Ton	Shipping Wt. (lbs)	Throat Depth (in)	Height of Press	Base Dimension	Largest Arbor	Size	Length	Stroke	Code No.	Price \$
<b>ARBOR PRESS</b>										
1/2	22	2-7/8	10	4 x 9-1/2	1-1/8	3/4 x 3/4	7-1/2	4-1/2	326-090	83.80
1	37	3-1/4	12	5 x 11	1-3/8	1 x 1	9-1/2	5-1/4	326-092	120.90
2	86	5	17	6-3/4 x 17	1-3/4	1-1/4 x 1-1/4	14	8-1/2	326-094	305.50
3	152	5-3/4	21-1/2	8 x 18	2-1/2	1-1/2 x 1-1/2	18	12-1/2	326-096	483.60
5	308	8-3/4	35-3/4	10 x 26-3/4	3-1/4	2 x 2	26-3/4	18-1/8	326-098	1,434.00

Capacity Ton	Shipping Wt. (lbs)	Throat Depth (in)	Height of Press	Base Dimension	Max. Height	Largest Arbor	Size	Length	Stroke	Code No.	Price \$
<b>RATCHET TYPE ARBOR PRESS</b>											
3	152	5-3/4	21-1/2	8 x 18	12-1/2	2-1/2	1-1/2 x 1-1/2	18	12-1/2	326-099	511.90

