

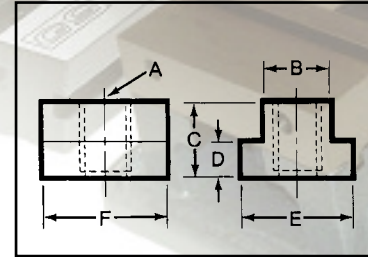
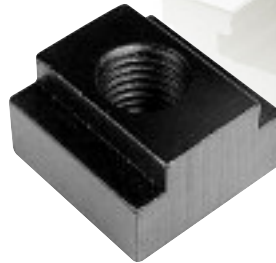
T-SLOT NUTS



T-SLOT NUTS

Last thread incomplete to prevent stud from turning through bottom of nut into machine table.

- Case hardened
- Black oxide finish
- Tapped through T-nuts available upon request



T-SLOT NUTS

Model No.	Table Slot	Thread A	B	C	D	E	F	Te-Co Code No.	Price \$	STM Code No.	Price \$
373	5/16	1/4-20	.304	1/4	.177	9/16	9/16	607-100	5.30		
374	3/8	1/4-20	.367	3/8	.224	9/16	9/16	607-102	5.30		
375	3/8	5/16-18	.367	3/8	.240	5/8	7/8	607-104	4.40	333-602	2.40
437	7/16	3/8-16	.427	1/2	.208	11/16	7/8	607-106	4.40	333-604	2.10
500	1/2	3/8-16	.490	1/2	.271	7/8	7/8	607-108	4.40	333-606	2.40
562	9/16	3/8-16	.552	5/8	.333	7/8	1-1/8	607-110	5.10	333-608	2.40
501	1/2	7/16-14	.490	1/2	.271	7/8	7/8	607-112	6.10		
502	1/2	7/16-14	.490	3/8	.208	3/4	7/8	607-114	5.90		
563	9/16	1/2-13	.552	5/8	.333	7/8	1-1/8	607-116	4.90	333-614	2.40
625	5/8	1/2-13	.615	5/8	.333	1	1-1/8	607-118	5.60	333-616	2.40
626	5/8	1/2-13	.615	3/4	.365	1-1/8	1-1/8	607-120	7.40		
687	11/16	1/2-13	.677	3/4	.427	1-1/8	1-1/4	607-122	6.00	333-618	2.80
750	3/4	1/2-13	.740	3/4	.458	1-1/4	1-1/4	607-124	8.10		
688	11/16	5/8-11	.677	3/4	.427	1-1/8	1-1/4	607-128	6.30	333-620	3.10
751	3/4	5/8-11	.740	3/4	.458	1-1/4	1-1/4	607-130	6.70	333-622	3.40
812	13/16	5/8-11	.802	1	.552	1-1/4	1-1/2	607-132	9.50	333-624	5.40
813	13/16	3/4-10	.802	1	.552	1-1/4	1-1/2	607-134	10.50	333-626	5.40
875	7/8	3/4-10	.865	1	.552	1-1/2	1-1/2	607-136	11.40	333-628	5.00
1000	1	3/4-10	.990	1	.615	1-5/8	1-3/4	607-138	13.00	333-630	5.40
1000	1	3/4-10	.990	1-1/2	.750	1-3/4	1-3/4	607-140	19.40		
1010	1-1/16	3/4-10	1.052	1-1/8	.677	1-5/8	2	607-142	15.20	333-632	7.70
1001	1	7/8-9	.990	1	.615	1-5/8	1-3/4	607-144	13.80	333-634	8.40
1062	1-1/16	7/8-9	1.052	1-1/8	.677	1-5/8	2	607-146	18.00		
1125	1-1/8	7/8-9	1.115	1-1/2	.740	1-3/4	2	607-148	23.10		
1063	1-1/16	1-8	1.052	1-1/8	.677	1-5/8	2	607-150	33.10	333-636	9.50
1126	1-1/8	1-8	1.115	1-1/2	.740	1-3/4	2	607-152	33.10		
1250	1-1/4	1-8	1.237	1-1/4	.865	2	2	607-154	33.40		
1310	1-5/16	7/8-9	1.302	1-1/4	.927	2	2	607-156	33.90		
1311	1-5/16	1-8	1.302	1-1/4	.927	2	2	607-158	29.80		
1375	1-3/8	1-1/4-7	1.362	1-3/4	1.115	2-1/2	2-1/2	607-162	63.30		



T-SLOT NUTS METRIC

Model No.	Table Slot (mm)	Table Slot Inch	Thread A (mm)	C (mm)	D (mm)	E (mm)	F (mm)	Code No.	Price \$
61401	8	5/16	M6 x 1.0	10	6	14	19	608-750	5.70
61402	10	7/16	M6 x 1.0	11	6	16	22	608-751	6.60
61403	10	7/16	M8 x 1.25	11	6	16	22	608-752	6.60
61404	12	1/2	M10 x 1.5	13	7	19	22	608-753	6.60
61405	14	9/16	M10 x 1.5	16	9	22	29	608-754	7.70
61406	14	9/16	M12 x 1.75	16	9	22	29	608-755	7.70
61407	16	5/8	M12 x 1.75	16	9	25	29	608-756	7.70
61408	17	11/16	M12 x 1.75	19	11	29	32	608-757	9.30
61409	18	3/4	M16 x 2.0	19	11	29	32	608-758	9.30
61410	21	13/16	M16 x 2.0	25	14	32	38	608-759	10.20
61411	22	7/8	M20 x 2.5	25	14	35	38	608-760	11.30
61412	27	1-1/16	M24 x 3.0	29	18	41	51	608-761	16.30
61413	33	1-5/16	M24 x 3.0	32	24	51	51	608-762	20.40