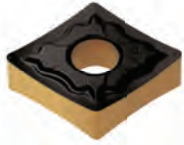
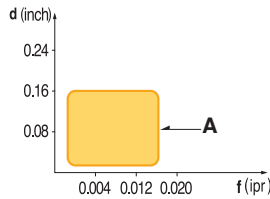




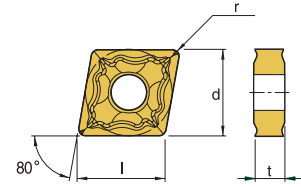
CNMG-A



- Sharp cutting edge generates low cutting force
- Specially designed tough main cutting edge
- Suitable for cutting of low carbon steel, stainless steel, aluminum

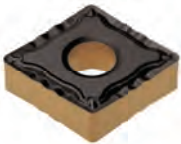


- USE Light & Medium
- Recommendation **A** $d = 0.03 \sim 0.16$ inch
 $f = 0.002 \sim 0.016$ ipr

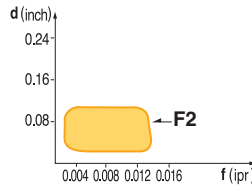


Designation	ISO	Coated Carbide										Cermet		Uncoated Carbide	(inch)				Applicable Holders	
		PT10C	PT20C	PT22C	PT25C	PM10P	MT20C	MT30P	KT05C	KT10C	ST10P	PT10S	PT20S	KTM10U	l	d	t	r	Holder	Page No.
CNMG 431-A	120404													147524 \$ 14.23	0.508	1/2	3/16	1/64	Turning MCKNR/L E48 MCLNR/L E48 MCRNR/L E49	
CNMG 432-A	120408				149285 \$ 17.74			147525 \$ 17.72						148378 \$ 17.21	0.508	1/2	3/16	1/32	Boring MCLNR/L E64 PCLNR/L E67	

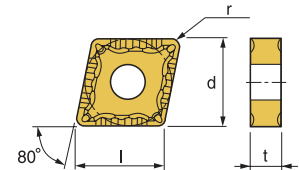
CNMG-F2



- Excellent chip control at varied depth of cutting
- Strong cutting edge toughness due to special design

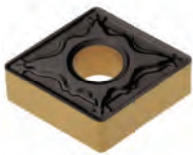


- USE Finishing
- Recommendation **F2** $d = 0.01 \sim 0.1$ inch
 $f = 0.002 \sim 0.014$ ipr

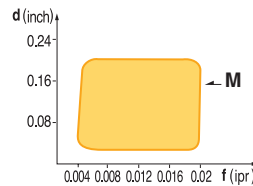


Designation	ISO	Coated Carbide										Cermet		Uncoated Carbide	(inch)				Applicable Holders	
		PT10C	PT15C	PT25C	PT30C	PM10P	MT20C	MT30P	KT05C	KT10C	KT15C	PT10S	PT20S	KTM10U	l	d	t	r	Holder	Page No.
CNMG 431-F2	120404		149333 \$ 17.21												0.508	1/2	3/16	1/64	Turning MCKNR/L E48 MCLNR/L E48 MCRNR/L E49	
CNMG 432-F2	09T304		149390 \$ 17.72	149391 \$ 17.72											0.508	1/2	3/16	1/32	Boring MCLNR/L E64 PCLNR/L E67	

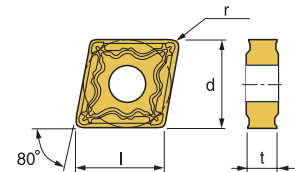
CNMG-M/M1



- Wide available chip control range from medium-finishing to medium-roughing
- Suitable chip breaker for CNC machining



- USE Medium
- Recommendation **M** $d = 0.04 \sim 0.2$ inch
 $f = 0.004 \sim 0.02$ ipr



Designation	ISO	Coated Carbide										Cermet		Uncoated Carbide	(inch)				Applicable Holders	
		PT10C	PT15C	PT20C	PT25C	PT30C	MT20C	MT30P	KT05C	KT10C	ST10P	PT10S	PT20S	KTM10U	l	d	t	r	Holder	Page No.
CNMG 431-M	120404				149394 \$ 17.72	147531 \$ 17.21		148819 \$ 17.21							0.508	1/2	3/16	1/64	Turning MCKNR/L E48 MCLNR/L E48 MCRNR/L E49	
CNMG 431-M1	120404				149251 \$ 17.72										0.508	1/2	3/16	1/64	Boring MCLNR/L E64 PCLNR/L E67	
CNMG 432-M1	120408		149393 \$ 17.21		149377 \$ 17.72										0.508	1/2	3/16	1/32		
CNMG 432-M	120408				149231 \$ 17.72	147535 \$ 17.72									0.508	1/2	3/16	1/32		
CNMG 433-M	120412				149375 \$ 17.72	147538 \$ 17.21									0.508	1/2	3/16	3/64		
CNMG 433-M1	120142		149555 \$ 17.72												0.508	1/2	3/16	3/64		
CNMG 543-M	160612					148306 \$ 27.19									0.634	5/8	1/4	3/64		
CNMG 643-M	190612									148949 \$ 29.43					0.760	3/4	1/4	3/64		