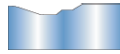
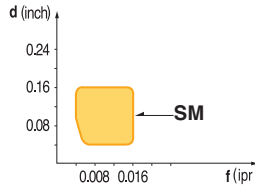




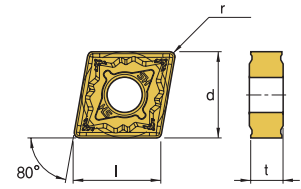
### CNMG-SM (SM Chipbreaker is for Stainless Steel medium feed.)



- Exclusive design for stainless steel cutting provides longer tool life
- Wear resistance has been reinforced through high rake angle of chip breaker land

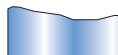


- USE Stainless Steel
- Recommendation  
SM  $d = 0.04 \sim 0.16$ inch  
 $f = 0.004 \sim 0.016$ ipr

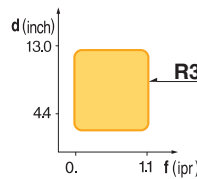


| Designation | ISO    | Coated Carbide |       |       |       |                    |       |                    |       |       |                    | Cermet |       | Uncoated Carbide | (inch) |     |      |      | Applicable Holders                                   |          |
|-------------|--------|----------------|-------|-------|-------|--------------------|-------|--------------------|-------|-------|--------------------|--------|-------|------------------|--------|-----|------|------|--|----------|
|             |        | PT10C          | PT20C | PT22C | PT30C | MT15C              | MT20C | MT30P              | KT05C | KT10C | ST10P              | PT10S  | PT20S | KTM10U           | l      | d   | t    | r    | Holder   | Page No. |
| CNMG 431-SM | 120404 |                |       |       |       | 149296<br>\$ 18.08 |       | 147487<br>\$ 17.72 |       |       | 148379<br>\$ 17.21 |        |       |                  | 0.508  | 1/2 | 3/16 | 1/64 | Turning<br>MCKNR/L E48<br>MCLNR/L E48<br>MCRNR/L E49 |          |
| CNMG 432-SM | 120408 |                |       |       |       |                    |       | 147489<br>\$ 17.72 |       |       | 148380<br>\$ 17.72 |        |       |                  | 0.508  | 1/2 | 3/16 | 1/32 |  |          |
| CNMG 433-SM | 120412 |                |       |       |       |                    |       | 146040<br>\$ 17.21 |       |       | 148855<br>\$ 17.21 |        |       |                  | 0.508  | 1/2 | 3/16 | 3/64 | Boring<br>MCLNR/L E64<br>PCLNR/L E67                 |          |
| CNMG 543-SM | 160612 |                |       |       |       |                    |       | 148940<br>\$ 26.77 |       |       |                    |        |       | 0.634            | 5/8    | 1/4 | 3/64 |      |  |          |
| CNMG 643-SM | 190612 |                |       |       |       |                    |       | 148939<br>\$ 35.84 |       |       | 148952<br>\$ 35.84 |        |       | 0.760            | 3/4    | 1/4 | 3/64 |      |  |          |

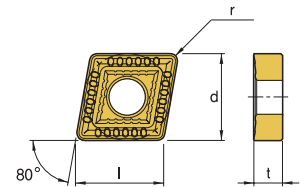
### CNMM-R3



- Specially designed toughest cutting edge provides superior cutting performance at deep depth of cut and fast feed rate
- Unique design of dot on cutting edge makes smooth chip flow and reduce cutting force

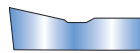
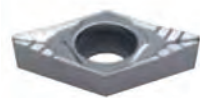


- USE Heavy Duty
- Recommendation  
R3  $d = 0.16 \sim 0.52$ inch  
 $f = 0.018 \sim 0.06$ ipr



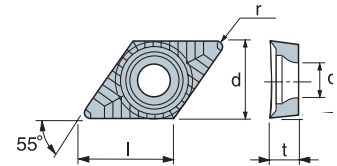
| Designation | ISO    | Coated Carbide |       |       |       |                    |       |       |       |       |       | Cermet |       | Uncoated Carbide | (inch) |     |      |                                      | Applicable Holders                                   |          |
|-------------|--------|----------------|-------|-------|-------|--------------------|-------|-------|-------|-------|-------|--------|-------|------------------|--------|-----|------|--------------------------------------|--|----------|
|             |        | PT10C          | PT20C | PT22C | PT30C | PM10P              | MT20C | MT30P | KT05C | KT10C | ST10P | PT10S  | PT20S | KTM10U           | l      | d   | t    | r                                    | Holder   | Page No. |
| CNMM 432-R3 | 120408 |                |       |       |       | 147505<br>\$ 17.51 |       |       |       |       |       |        |       |                  | 0.508  | 1/2 | 3/16 | 1/32                                 | Turning<br>MCKNR/L E48<br>MCLNR/L E48<br>MCRNR/L E49 |          |
| CNMM 643-R3 | 190612 |                |       |       |       | 147508<br>\$ 35.84 |       |       |       |       |       |        |       | 0.760            | 3/4    | 1/4 | 3/64 | Boring<br>MCLNR/L E64<br>PCLNR/L E67 |  |          |

### DCGT-AM (AM Chipbreaker is for Aluminum)



- Exclusive chip breaker for aluminum and aluminum alloy

- USE Aluminum Cutting
- Recommendation  
AP  $d = 0.020 \sim 0.157$ inch  
 $f = 0.002 \sim 0.020$ ipr



| Designation     | ISO    | Coated Carbide |       |       |       |       |       |       |       |       |       | Diamond Coated | Uncoated Carbide   | (inch) |     |      |       | Applicable Holders                              |          |
|-----------------|--------|----------------|-------|-------|-------|-------|-------|-------|-------|-------|-------|----------------|--------------------|--------|-----|------|-------|---|----------|
|                 |        | PT10C          | PT20C | PT22C | PT30C | PM10P | MT20C | MT30P | KT05C | KT10C | ST10P | ND100          | KT10U              | l      | d   | t    | r     | Holder  | Page No. |
| DCGT 21.50.5-AM | 070202 |                |       |       |       |       |       |       |       |       |       |                | 146048<br>\$ 20.10 | 0.307  | 1/4 | 3/32 | 0.008 | Turning<br>SDJCR/L E56<br>SDNCN E57             |          |
| DCGT 21.52-AM   | 070208 |                |       |       |       |       |       |       |       |       |       |                | 146052<br>\$ 20.67 | 0.307  | 1/4 | 3/32 | 1/32  |   |          |
| DCGT 32.50.5-AM | 11T302 |                |       |       |       |       |       |       |       |       |       |                | 145664<br>\$ 24.23 | 0.457  | 3/8 | 5/32 | 0.008 | Boring<br>SDQCR E70<br>SDUCR E70<br>SDZCR/L E71 |          |
| DCGT 32.51-AM   | 11T304 |                |       |       |       |       |       |       |       |       |       |                | 146059<br>\$ 23.55 | 0.457  | 3/8 | 5/32 | 1/64  |   |          |
| DCGT 32.52-AM   | 11T308 |                |       |       |       |       |       |       |       |       |       |                | 146063<br>\$ 23.55 | 0.457  | 3/8 | 5/32 | 1/32  |   |          |

#### Quick Choice Grade Selection

|            |                      |                       |                           |
|------------|----------------------|-----------------------|---------------------------|
| P<br>Steel | M<br>Stainless Steel | K<br>Cast Iron - Alum | S<br>Heat Resistant Alloy |
|------------|----------------------|-----------------------|---------------------------|