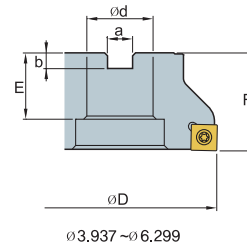




## Max Mill 90° Face Mill



(inch)

Designation	Code No.	Price \$	ØD	Ød	Ød <sub>1</sub>	a	b	E	F	No. of Inserts	Insert
MM 90° 4250FM	146805	<b>740.01</b>	2.500	1.000	0.551	0.370	0.248	0.787	1.575	4	SDXT1305
4300FM	146806	<b>808.32</b>	3.000	1.000	0.551	0.384	0.248	0.866	1.969	5	
4400FM	146807	<b>944.99</b>	4.000	1.250	-	0.510	0.319	0.866	1.969	6	
4500FM	146808	<b>1,146.21</b>	5.000	1.500	-	0.636	0.394	1.181	2.480	8	
4600FM	146809	<b>2,727.88</b>	6.000	2.000	-	0.758	0.433	1.181	2.480	8	

### Available Insert

SDXT	Designation
	SDXT130508R- F2 M A

➤ P. E98

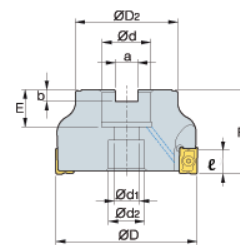
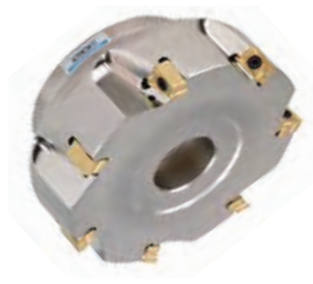
### Parts

Screw	Wrench	Assembling
FTNC 04511 146424 <b>\$ 8.76</b>	TW20S 147216 <b>\$ 43.35</b>	

See pages E124 through E126 for Cutting Conditions

Indexable Cutting Tools

## DS4 Face Mill



\*AR:-6°, RR:-19° ~ 13°

(inch)

Designation	Code No.	Price \$	ØD	ØD2	Ød	Ød <sub>1</sub>	Ød <sub>2</sub>	a	b	E	F	No. of Inserts	ℓ	Insert
DS4 3200HR	148373	<b>1,094.30</b>	2.00	1.772	0.75	0.413	0.630	0.313	0.220	0.787	1.75	7	0.354	LNMX100605PNR
3400HR	148391	<b>2,098.89</b>	4.00	2.874	1.25	0.709	1.024	0.500	0.319	0.866	2.00	12	0.354	
4250HR-M	148876	<b>1,275.14</b>	2.50	2.205	1.00	0.551	0.827	0.375	0.248	0.866	1.75	6	0.551	LNMX151008PNR
4300HR	148877	<b>1,344.29</b>	3.00	2.205	1.00	0.551	0.827	0.375	0.248	0.866	2.00	5	0.551	

### Inserts / Parts

Designation	Available Insert	Screw	Wrench
LNMX100605PNR-F2	LNMX	FTKA 0307 148210 <b>\$ 16.02</b>	TW09S 148191 <b>\$ 43.35</b>
LNMX151008PNR-M		FTKA 0421B 146969 <b>\$ 12.90</b>	TW 15S 146801 <b>\$ 47.64</b>

➤ P. E94-95