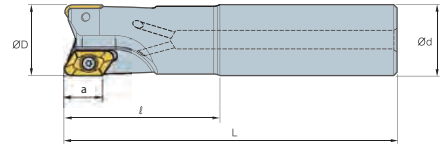


Alumi Mill-X End Mill



Coolant through

- Multi-dimensional clamping face prevents micro-vibrations during high speed machining
- Buffed mirror finish of inserts allows outstanding chip control and prevents edge build up
- Multi-functional aluminum milling tool: Shouldering, Slotting, Helical Ramping, and Copying



(inch)

Designation	Code No.	Price \$	ØD	Ød	a	l	L	No. of Inserts	Insert
AME-X 5100HR-A	146411	517.49	1.00	1.00	0.669	2.362	5.512	2	XEKT 19M5
AME-X 5100HR-B	146413	517.49	1.00	1.00	0.669	2.362	5.512	2	
AME-X 5125HR-A	146419	552.08	1.25	1.25	0.669	2.756	5.901	2	
AME-X 5125HR-B	146423	552.08	1.25	1.25	0.669	2.756	5.901	2	
AME-X 5150HR-A	146431	749.75	1.50	1.50	0.669	2.756	6.229	3	
AME-X 5150HR-B	146432	749.75	1.50	1.50	0.669	2.756	6.229	3	

* Type A: Insert Nose R 1/64"~1/8" Type B: Insert Nose R 0.157"~0.197

Inserts / Parts

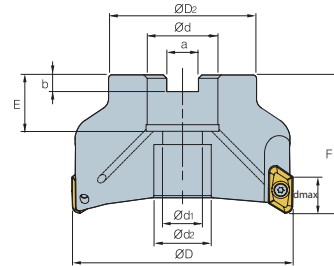
Designation	Available Insert	Screw	Wrench
AME-X HR-A AME-X HR-B	XEKT 19M50 to 19M53 XEKT 19M54 to 19M55 ▶ P.E105	PTKA 0408 148716 \$ 10.16	TW15S 146801 \$ 47.64

Alumi Mill-X Face Mill



Coolant through

- Multi-dimensional clamping face prevents micro-vibrations during high speed machining
- Buffed mirror finish of inserts allows outstanding chip control and prevents edge build up
- Multi-functional aluminum milling tool: Shouldering, Slotting, Helical Ramping, and Copying



(inch)

Designation	Code No.	Price \$	ØD	Ød	ØD2	a	b	E	F	dmax	No. of Inserts
AMFM-X 5150HR-A	146434	713.92	1.50	0.50	1.417	0.252	0.169	0.630	1.50	0.67	3
AMFM-X 5150HR-B	146445	713.92	1.50	0.50	1.417	0.252	0.169	0.630	1.50	0.67	3
AMFM-X 5200HR-A	146467	836.76	2.00	0.75	1.772	0.321	0.220	0.787	1.75	0.67	4
AMFM-X 5200HR-B	146469	761.40	2.00	0.75	1.772	0.321	0.220	0.787	1.75	0.67	4
AMFM-X 5250HR-A	146481	852.43	2.50	0.75	1.772	0.321	0.220	0.787	1.75	0.67	5
AMFM-X 5250HR-B	146490	852.43	2.50	0.75	1.772	0.321	0.220	0.787	1.75	0.67	5
AMFM-X 5300HR-A	146525	884.47	3.00	1.00	2.205	0.384	0.248	0.866	2.00	0.67	5
AMFM-X 5300HR-B	146526	884.47	3.00	1.00	2.205	0.384	0.248	0.866	2.00	0.67	5
AMFM-X 5400HR-A	146534	1,008.25	4.00	1.50	3.386	0.636	0.394	1.181	2.50	0.67	6
AMFM-X 5400HR-B	146535	1,008.25	4.00	1.50	3.386	0.636	0.394	1.181	2.50	0.67	6
AMFM-X 5500HR-A	146544	1,302.55	5.00	1.50	3.386	0.636	0.394	1.181	2.50	0.67	7
AMFM-X 5500HR-B	146550	1,302.55	5.00	1.50	3.386	0.636	0.394	1.181	2.50	0.67	7

* Type A: Insert Nose R 1/64"~1/8" Type B: Insert Nose R 0.157"~0.197

Inserts / Parts

Designation	Available Insert	Screw	Wrench
AMFM-X HR-A AMFM-X HR-B	XEKT 19M50 to 19M53 XEKT 19M54 to 19M55 ▶ P.E105	PTKA 0408 148716 \$ 10.16	TW15S 146801 \$ 47.64