



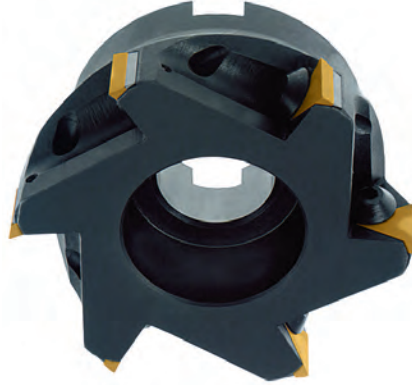
Square Shoulder Milling Cutters 90°

Positive Rake 90° Right Hand Cut

Note: Square shoulder milling cutters are furnished without cutting inserts. Precision and utility inserts can be used.

Tool Angles

- Cutting rake 0°
- Setting angle 90°
- Axial rake 0°



Cutting Dia.	Shank Arbor Hole	No. of Inserts	Insert	Code No.	Price \$
2	3/4	3	TPG	141220	703.95
2-1/2	1	3	TPU 43	141200	1,027.14
3	1	4	TPU 43	141202	1,475.35
4	1-1/2	5	TPU 43	141204	1,746.16
5	1-1/2	6	TPU 43	141206	2,379.89
6	2	7	TPU 43	141208	3,341.91

► P.E104

Spare Parts

Cutting Dia.	For 2" Cutters		For 2-1/2" to 6" Cutters	
	Code No.	Price \$	Code No.	Price \$
Clamp Screw	141061	19.18	141210	41.05
Shim	-	-	141212	14.74
Shim Screw	-	-	141214	15.02
Hex Key	-	-	-	-

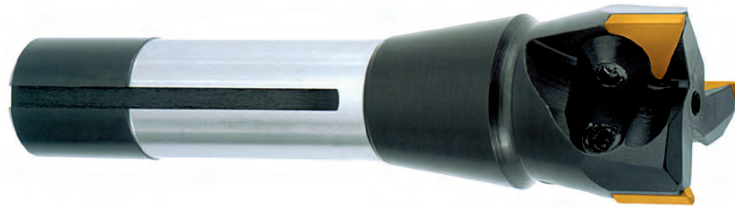
Carbide Insert End Mills 90°

Note: Insert End Mills are furnished without cutting inserts. Precision and utility inserts can be used.



Tool Angles

- Cutting rake 0°
- Setting angle 90°
- Axial rake 0°



Cutting Dia.	Shank	No. of Inserts	Insert	Code No.	Price \$
1/2	1/2" Str. Shk. Weldon	1	TPG/TPU-21	141000	279.43
3/4	3/4" Str. Shk. Weldon	2	TPG/TPU-21	141002	269.17
1	3/4" Str. Shk. Weldon	2	TPG/TPU-22	141003	332.03
1-1/4	3/4" Str. Shk. Weldon	2	TPG/TPU/TPC-32	141004	454.47
1-1/2	3/4" Str. Shk. Weldon	3	TPG/TPU/TPC-32	141005	603.01
1-3/4	3/4" Str. Shk. Weldon	3	TPG/TPU/TPC-32	141006	324.59
2	3/4" Str. Shk. Weldon	3	TPG/TPU/TPC-32	141007	760.68
1	1" Str. Shk. Weldon	2	TPG/TPU-22	141008	248.51
1-1/4	1" Str. Shk. Weldon	2	TPG/TPU/TPC-32	141009	275.49
1-1/2	1" Str. Shk. Weldon	3	TPG/TPU/TPC-32	141010	555.60
2	1" Str. Shk. Weldon	3	TPG/TPU/TPC-32	141012	730.72
1-1/4	R-8 Bridgeport	2	TPG/TPU/TPC-32	141013	556.28
1-1/2	R-8 Bridgeport	3	TPG/TPU/TPC-32	141014	671.78
1-3/4	R-8 Bridgeport	3	TPG/TPU/TPC-32	141015	695.12
2	R-8 Bridgeport	3	TPG/TPU/TPC-32	141016	864.38

► P.E104

Spare Parts

Description	Code No.	Price \$
Screw for 1/2"	141244	28.36
Screw for 3/4", 7/8", 1"	141060	18.18
Screw for 1-1/2"	141064	15.93
All other sizes	141061	19.18