

## AP11 Master End Mill Kit



**Consists of:**

- 1 - Each 1/2", 5/8", 3/4", 1" AP11-90 End Mills
- 20 - APXT 11T3 Inserts (Coated)

Kit Contents	Insert	Kit Code No.	Price \$
1/2" $\phi$ , 5/8" $\phi$ , 3/4" $\phi$ , and 1" $\phi$ Mini-Mill (146371, 146372, 146373, 146374)	20 - APXT 11T3 PM25C Inserts (146356)	149866	1,130.22

Note: Each Kit Contains 146596 T8 Torx Wrench

## AP16 End Mill Kits



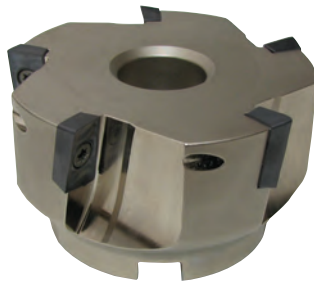
**Consists of:**

- 1 - AP16-90 Endmills
- 10 - APKT 1604 Inserts (Coated)

Kit Contents	Insert	Kit Code No.	Price \$
1" 2-Fl. End Mill (1" Shank) (145705)	10 - APKT 1604PDSR M PM30P Coated Inserts (147333)	149900	499.06
1-1/4" 3-Fl. End Mill (1" Shank) (145706)	10 - APKT 1604PDSR M PM30P Coated Inserts (147333)	149901	530.01
1-1/2" 3-Fl. End Mill (1-1/4" Shank) (145707)	10 - APKT 1604PDSR M PM30P Coated Inserts (147333)	149902	561.18

Note: Each Kit Contains 146-596 T8 Torx Wrench

## APFM Face Mill Kits



**Consists of:**

- 1 - APFM 16-90 Face Mill
- 10 - APKT 1604 Inserts (Coated)

Kit Contents	Insert	Kit Code No.	Price \$
2" Face Mill (147009)	c/w 10 inserts (147333) APKT 1604 PDSR M PM30P	149907	660.56
2-1/2" Face Mill (147011)	c/w 10 inserts (147333) APKT 1604 PDSR M PM30P	149908	848.32
3" Face Mill (147013)	c/w 10 inserts (147333) APKT 1604 PDSR M PM30P	149909	838.82
4" Face Mill (147000)	c/w 10 inserts (147333) APKT 1604 PDSR M PM30P	149910	963.59
5" Face Mill (147015)	c/w 10 inserts (147333) APKT 1604 PDSR M PM30P	149911	981.72

## R8 Milling Cutter & Insert Kit



Kit Contents	Insert	Kit Code No.	Price \$
2" R8 (Bridgeport shank) End Mill (141016)	c/w 10 inserts (146709) TPU 322 PM25C Inserts (Coated)	500732	1,095.77

**Consists of:**

- 1 - R8 Shank End Mill 2" Dia.
- 10 - TPU 322 Inserts (Coated)