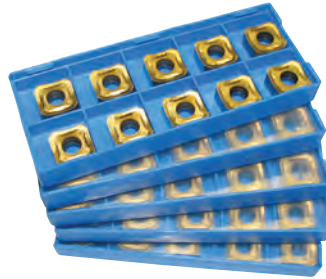


## DS8 45° Milling Kits



**Consists of:**  
 1 - DS8 45° Face Mill  
 20-80 SNMX 1206ANN-M Inserts

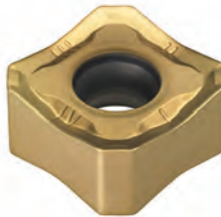


Coolant through

Kit Contents	Insert	Kit Code No.	Price \$
2" (Z=4) DS8 4200HR-M (148979)	c/w 20 inserts (145679)	SNMX 1206ANN-M PM30P	149779 <b>642.14</b>
2-1/2" (Z=6) DS8 4250HR-M (148980)	c/w 20 inserts (145679)	SNMX 1206ANN-M PM30P	149778 <b>1,033.47</b>
3" (Z=5) DS8 4300HR (148885)	c/w 30 inserts (145679)	SNMX 1206ANN-M PM30P	149777 <b>2,006.68</b>
3" (Z=7) DS8 4300HR-M (148887)	c/w 30 inserts (145679)	SNMX 1206ANN-M PM30P	149776 <b>1,641.70</b>
3" (Z=10) DS8 4300HR-H (148886)	c/w 30 inserts (145679)	SNMX 1206ANN-M PM30P	149775 <b>2,132.06</b>
4" (Z=6) DS8 4400HR (148888)	c/w 40 inserts (145679)	SNMX 1206ANN-M PM30P	149774 <b>1,535.54</b>
4" (Z=8) DS8 4400HR-M (148890)	c/w 40 inserts (145679)	SNMX 1206ANN-M PM30P	149773 <b>2,009.50</b>
4" (Z=12) DS8 4400HR-H (148889)	c/w 40 inserts (145679)	SNMX 1206ANN-M PM30P	149772 <b>1,639.95</b>
5" (Z=8) DS8 4500HR (148891)	c/w 50 inserts (145679)	SNMX 1206ANN-M PM30P	149771 <b>4,137.22</b>
5" (Z=10) DS8 4500HR-M (148893)	c/w 50 inserts (145679)	SNMX 1206ANN-M PM30P	149764 <b>2,534.34</b>
5" (Z=16) DS 4500HR-H (148892)	c/w 50 inserts (145679)	SNMX 1206ANN-M PM30P	149770 <b>2,135.56</b>
6" (Z=10) DS8 4600HR (148894)	c/w 60 inserts (145679)	SNMX 1206ANN-M PM30P	149769 <b>2,387.91</b>
6" (Z=12) DS8 4600HR-M (148896)	c/w 60 inserts (145679)	SNMX 1206ANN-M PM30P	149768 <b>5,121.79</b>
6" (Z=18) DS8 4600HR-H (148895)	c/w 60 inserts (145679)	SNMX 1206ANN-M PM30P	149767 <b>1,936.73</b>
8" (Z=14) DS8 4800HR-M (148898)	c/w 80 inserts (145679)	SNMX 1206ANN-M PM30P	149766 <b>4,301.66</b>
8" (Z=24) DS8 4800HR-H (148897)	c/w 80 inserts (145679)	SNMX 1206ANN-M PM30P	149765 <b>3,489.56</b>

2" - 5" With Coolant hole  
 6" - 8" No Coolant Hole

### Features of the DS8 Insert



- Innovative double-sided high rake angle insert makes it possible to use 8 cutting edges
- Smooth cutting with low cutting load that has been acquired from the unique geometry and high rake angle of cutting edge guarantees excellent surface finish
- The combination of the innovative geometries and the variety of grades provides wide coverage for milling applications
- Applicable for various workpieces including Steel, Cast Iron and Stainless Steel