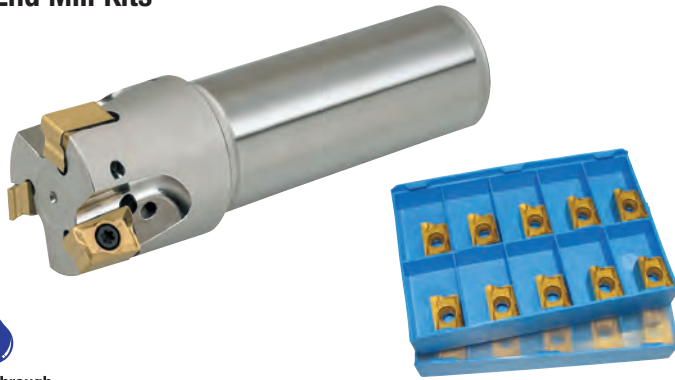


DS4 End Mill Kits



Coolant through

Consists of:

- 1 - DS4 90° End Mill
- 10-20 LNMX100605PNR-F2 Inserts or
- 10-20 LNMX151008PNR-M Inserts

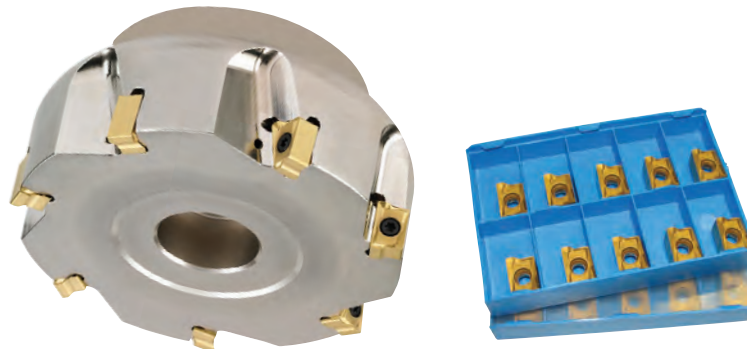


Features of the DS4 Insert

- Chip breaker has a high rake angle for smooth chip control
- Step design improves chip control by reducing the cutting load
- Major cutting edge for low cutting
- Concave design to avoid interference between each cutting edge
- Specially designed minor cutting edge improves surface finish
- Periphery face has a strong and negative face (Clearance angle 0°).

Kit Contents	Insert	Kit Code No.	Price \$
1-1/4" (Z=3) DS4 3125HR-S125 (146390)	c/w 10 inserts (145636)	LNMX100605PNR-F2 PM30P	149763 860.27
1-1/4" (Z=4) DS4 3125HR-S125M (146391)	c/w 10 inserts (145636)	LNMX100605PNR-F2 PM30P	149780 697.30
1-1/4" (Z=2) DS4 4125HR-S125 (148870)	c/w 10 inserts (145678)	LNMX151008PNR-M PM30P	149781 937.20
1-1/2" (Z=3) DS4 4150HR-S125 (148871)	c/w 10 inserts (145678)	LNMX151008PNR-M PM30P	149782 723.78
2" (Z=4) DS4 4200HR-S125M (148872)	c/w 10 inserts (145678)	LNMX151008PNR-M PM30P	149783 856.30
1-1/2" (Z=4) DS4 3150HR-S125 (146392)	c/w 20 inserts (145636)	LNMX100605PNR-F2 PM30P	149784 737.13
2" (Z=5) DS4 3200HR-S125 (146394)	c/w 20 inserts (145636)	LNMX100605PNR-F2 PM30P	149786 1,471.31
2" (Z=7) DS4 3200HR-S125M (146395)	c/w 20 inserts (145636)	LNMX100605PNR-F2 PM30P	149787 1,169.39

DS4 Face Mill Kits



Coolant through

Consists of:

- 1 - DS4 90° Face Mill
- 20-30 LNMX100605PNR-F2 Inserts or
- 20-60 LNMX151008PNR-M Inserts



Kit Contents	Insert	Kit Code No.	Price \$
1-1/2" (Z=5) DS4 3150HR-M (146393)	c/w 20 inserts (145636)	LNMX100605PNR-F2 PM30P	149788 1,007.21
2-1/2" (Z=9) DS4 3250HR-M (148374)	c/w 30 inserts (145636)	LNMX100605PNR-F2 PM30P	149789 2,023.70
3" (Z=10) DS4 3300HR-M (148376)	c/w 30 inserts (145636)	LNMX100605PNR-F2 PM30P	149790 2,598.05
4" (Z=12) DS4 3400HR-M (148391)	c/w 30 inserts (145636)	LNMX100605PNR-F2 PM30P	149791 2,245.00
2-1/2" (Z=4) DS4 4250HR (148875)	c/w 20 inserts (145678)	LNMX151008PNR-M PM30P	149792 1,139.51
2-1/2" (Z=6) DS4 4250HR-M (148876)	c/w 20 inserts (145678)	LNMX151008PNR-M PM30P	149793 2,043.34
3" (Z=5) DS4 4300HR (148877)	c/w 30 inserts (145678)	LNMX151008PNR-M PM30P	149794 1,576.91
4" (Z=8) DS4 4400HR-M (146880)	c/w 40 inserts (145678)	LNMX151008PNR-M PM30P	149795 3,472.34
5" (Z=7) DS4 4500HR (148881)	c/w 50 inserts (125678)	LNMX151008PNR-M PM30P	149796 2,570.45
5" (Z=10) DS4 4500HR-M (148882)	c/w 50 inserts (145678)	LNMX151008PNR-M PM30P	149797 2,955.32
6" (Z=8) DS4 4600HR (148883)*	c/w 60 inserts (145678)	LNMX151008PNR-M PM30P	149798 2,914.93
6" (Z=11) DS4 4600HR-M (148884)*	c/w 60 inserts (145678)	LNMX151008PNR-M PM30P	149799 3,332.20

* non-coolant through

Prices in this catalogue are subject to change without notice. If there is a discrepancy between a product price listed in this catalogue and that listed on www.sowatool.com, the price on our website will take precedence.

Images are representational only and may not reflect actual product.