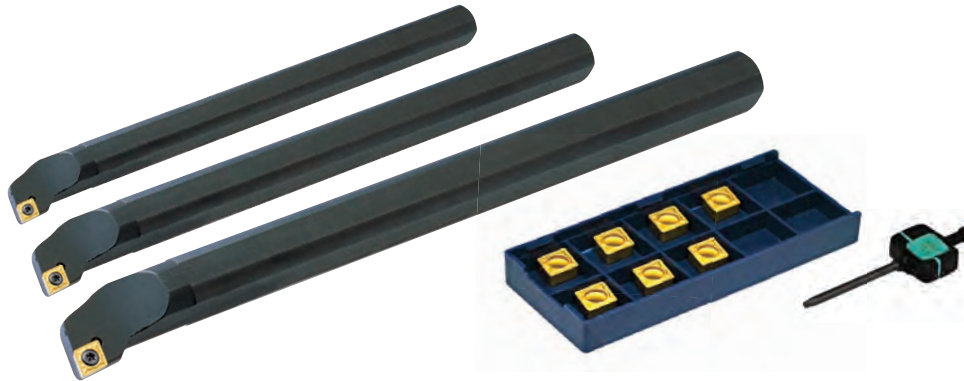


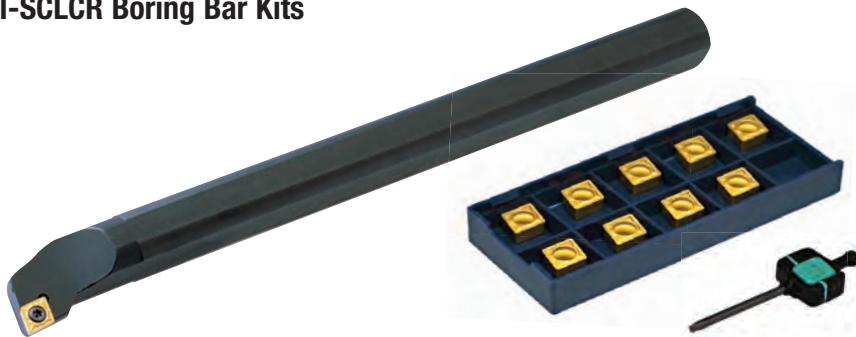
## SI-SCLCR/L Master Boring Bar Kits



**Consists of:**  
 1 - 5/8" Ø B/Bar, SI-SCLCR 10-3 (145925)  
 1 - 3/4" Ø B/Bar, SI-SCLCR 12-3 (145926)  
 1 - 1" Ø B/Bar, SI-SCLCR 16-3 (145927)  
 10 - CCMT 32.51 inserts  
 1 - wrench (146940)

Application	Material	Kit Contents	Right Hand Kit Code No.	Price \$	Left Hand Kit Code No.	Price \$
Medium	Steel	1pc SI SCLCR 5/8", 3/4", 1" Boring Bars	10pcs CCMT 32.51 F2P PT25C (149220)	149471	612.04	-
Medium	Steel	1pc SI SCLCL 5/8", 3/4", 1" Boring Bars	10pcs CCMT 32.51 F2P PT25C (149220)	-	-	149473 663.80
Medium	Aluminum	1pc SI SCLCR 5/8", 3/4", 1" Boring Bars	10pcs CCGT 32.51 AP KT10U (146011)	149847	685.37	-

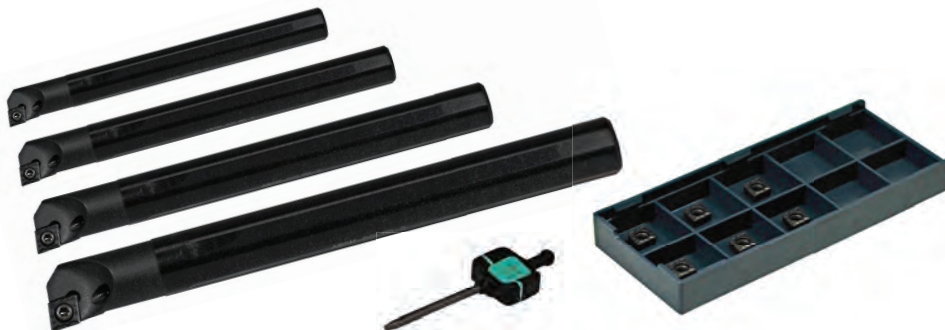
## SI-SCLCR Boring Bar Kits



**Consists of:**  
 1 - SI-SCLCR Boring Bar  
 10 - CCMT 32.51 Inserts (Coated)

Application	Material	Kit Contents	Right Hand Kit Code No.	Price \$
Medium	Steel	1pc SI SCLCR 10-3(5/8")(145925)	10pcs CCMT 32.51 F2P PT25C (149220)	149475 266.77
Medium	Steel	1pc SI SCLCR 12-3(3/4")(145926)	10pcs CCMT 32.51 F2P PT25C (149220)	149477 293.80
Medium	Steel	1pc SI SCLCR 16-3(1")(145927)	10pcs CCMT 32.51 F2P PT25C (149220)	149479 328.20

## A-SCLCR Coolant Through Boring Bar Kits



**Consists of:**  
 1 - 5/16" Ø B/Bar, A-SCLCR 5-2 (146589)  
 1 - 3/8" Ø B/Bar, A-SCLCR 6-2 (146590)  
 1 - 1/2" Ø B/Bar, A-SCLCR 8-2 (146591)  
 1 - 5/8" Ø B/Bar, A-SCLCR 10-2 (147348)  
 1 - wrench (146939)  
 10 - CC\_T21.51 Inserts

Application	Material	Kit Contents	Right Hand Kit Code No.	Price \$
Finishing	Steel	1pc A-SCLCR 5/16", 3/8", 1/2", 5/8	10pcs CCMT 21.50.5 F2P PT25C (149252)	149481 735.85
Medium	Steel	1pc A-SCLCR 5/16", 3/8", 1/2", 5/8	10pcs CCMT 21.51 F2P PT25C (149227)	149483 735.75
Medium	Aluminum	1pc A-SCLCR 5/16", 3/8", 1/2", 5/8	10pcs CCGT 21.51 AP KT10U (146024)	149850 640.18