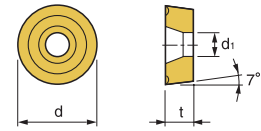


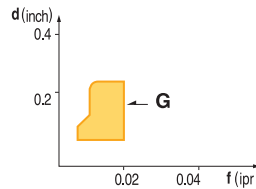
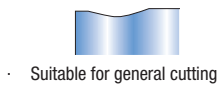
Indexable Cutting Tools

RCMX

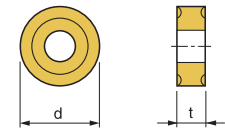


Designation	ISO	Coated Carbide								Cermet		Uncoated Carbide		(inch)			Applicable Holders			
		PT10C	PT20C	PT22C	PT25C	PM10P	MT20C	MT30P	KT05C	KT10C	PT10S	PT20S	KT10U	PM20U	l	d	t	d1	Holder	Page No.
RCMX 1003MO					149294 \$ 14.92										0.394	1/8	0.142		Turning PRDCN	E55
RCMX 1204MO					149272 \$ 19.10										0.472	3/16	0.165			

RNMG Negative Turning Inserts



- USE General Cutting
- Recommendation
G d = 0.16~0.4inch
 f = 0.02~0.04ipr

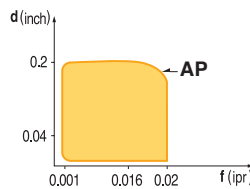
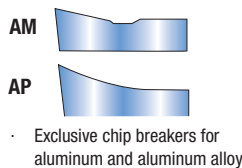
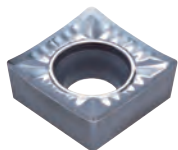


Designation	ISO	Coated Carbide								Cermet		Uncoated Carbide		(inch)			Applicable Holders			
		PT10C	PT22C	PT30C	PM25C	PM10P	MT20C	MT30P	KT05C	KT10C	PT10S	PT20S	KT10U	PM20U	l	d	t	d1	Holder	Page No.
RNMG 43-G	120400			148724 \$ 17.80											1/2	3/16	13/64			
RNMG 64-G	190600			146783 \$ 34.35											3/4	1/4	5/16			
RNMG 84-G	250600			146092 \$ 64.05											1	1/4	23/64			

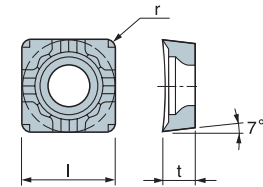
SC_T 90° Positive Turning Inserts



SCGT-AM/AP (AM & AP Chipbreakers are for Aluminum)



- USE Aluminum Cutting
- Recommendation
AM d = 0.020~0.157inch
 f = 0.002~0.020ipr
AP d = 0.005~0.2inch
 f = 0.001~0.02ipr



Designation	ISO	Coated Carbide										Diamond Coated	Uncoated Carbide	(inch)			Applicable Holders	
		PT10C	PT20C	PT22C	PT30C	PM10P	MT20C	MT30P	KT05C	KT10C	ST10P	ND100	KT10U	l	t	r	Holder	Page No.
SCGT 32.51-AM	09T304												146094 \$ 24.57	3/8	5/32	1/64	Turning	
SCGT 32.52-AM	09T308												145667 \$ 24.57	3/8	5/32	1/32	SSBCR/L	E57
SCGT 431-AM	120404												146101 \$ 27.28	1/2	3/16	1/64	SSSCR/L	E58
SCGT 432-AM	120408												145668 \$ 27.28	1/2	3/16	1/32	Boring	E71
SCGT 32.51-AP(K)	09T304												146993 \$ 24.57	3/8	5/32	1/64	SSKCR/L	
SCGT 32.52-AP	09T308												146994 \$ 25.31	3/8	5/32	1/32		
SCGT 431-AP	120404												146996 \$ 27.28	1/2	3/16	1/64		
SCGT 432-AP	120408												146995 \$ 28.08	1/2	3/16	1/32		

Quick Choice Grade Selection

