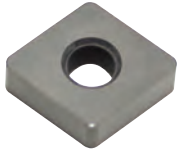


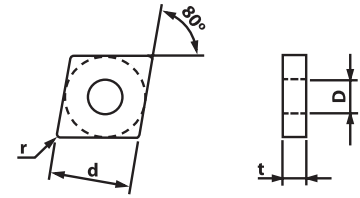
# CERAMIC Inserts

## CNGA

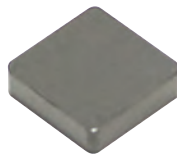
\*For additional technical information see page E181-182



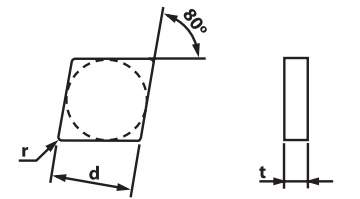
Designation	ISO	CERAMIC			(inch)			Applicable Holders	
		GP100	GP300	S400	d	t	r	Holder	Page No.
CNGA 431	120404	149416	149418		0.500	0.187	0.016	Turning	E48
		\$ 15.67	\$ 16.47						
CNGA 432	120408	149420	149422		0.500	0.187	0.031	MCKNR/L	E48
		\$ 22.30	\$ 20.29						
CNGA 433	120412	149424	149426		0.500	0.187	0.047	MCRNR/L	E49
		\$ 15.67	\$ 20.29						
CNGA 434	120416	149428	149430		0.500	0.187	0.063	Boring	E64
		\$ 15.67	\$ 16.47						
CNGA 452	120708	149432	149434		0.500	0.313	0.031	MCLNR/L	E67
		\$ 19.00	\$ 20.01						
CNGA 453	120712	149436	149438		0.500	0.313	0.047	PCLNR/L	E67
		\$ 19.00	\$ 20.01						



## CNGN



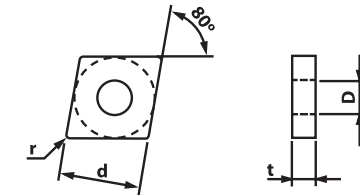
Designation	ISO	CERAMIC			(inch)			Applicable Holders	
		GP100	GP300	S400	d	t	r	Holder	Page No.
CNGN 431	150404	149400	149402		0.500	0.187	0.016		
		\$ 15.67	\$ 16.47						
CNGN 432	150408	149404	149406		0.500	0.187	0.031		
		\$ 15.67	\$ 16.47						
CNGN 433	150412	149408	149410		0.500	0.187	0.047		
		\$ 15.67	\$ 16.47						
CNGN 434	150416	149412	149414		0.500	0.187	0.063		
		\$ 15.67	\$ 16.47						



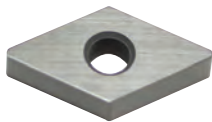
## CNMA



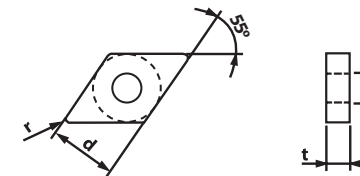
Designation	ISO	CERAMIC			(inch)			Applicable Holders	
		GP100	GP300	S400	d	t	r	Holder	Page No.
CNMA 432	150404			149558	0.500	0.187	0.031	Turning	E48
				\$ 26.44					
CNMA 433	150412			149592	0.500	0.187	0.047	MCKNR/L	E48
				\$ 28.89					
CNMA 434	150416			149562	0.500	0.187	0.063	MCLNR/L	E49
				\$ 26.44					
CNMA 544	160416			149564	0.625	0.250	0.063	Boring	E64
				\$ 38.64					



## DNGA



Designation	ISO	CERAMIC			(inch)			Applicable Holders	
		GP100	GP300	S400	d	t	r	Holder	Page No.
DNGA 431	150404	149448	149450		0.500	0.187	0.016	Turning	E49
		\$ 27.57	\$ 23.47						
DNGA 432	150408	149452	149454		0.500	0.187	0.031	Boring	E67
		\$ 22.38	\$ 27.57						
DNGA 441	150604	149456	149458		0.500	0.250	0.016	PDJNR/L	E68
		\$ 23.75	\$ 25.00						
DNGA 442	150608	149460	149462		0.500	0.250	0.031		
		\$ 23.75	\$ 22.38						
DNGA 443	150612	149464	149466		0.500	0.250	0.047		
		\$ 23.75	\$ 25.00						



## DNGN



Designation	ISO	CERAMIC			(inch)			Applicable Holders	
		GP100	GP300	S400	d	t	r	Holder	Page No.
DNGN 432	150408	149440			0.500	0.187	0.031		
		\$ 22.38							
DNGN 433	150412	149442			0.500	0.187	0.047		
		\$ 22.38							
DNGN 442	150608	149444			0.500	0.250	0.031		
		\$ 23.75							
DNGN 443	150612	149446			0.500	0.250	0.047		
		\$ 23.75							

