

CERAMIC Inserts

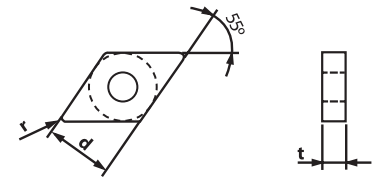


DNMA

*For additional technical information see page E181-182



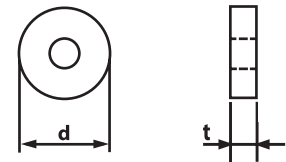
Designation	ISO	CERAMIC			(inch)			Applicable Holders	
		GP100	GP300	S400	d	t	r	Holder	Page No.
DNMA 443	150612			149576 \$ 41.67	0.500	0.250	0.047	Turning MDJNR/L E49 Boring PDSNR/L E67 PDUNR/L E68	



RNGA



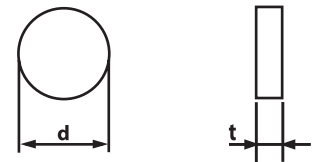
Designation	ISO	CERAMIC			(inch)			Applicable Holders	
		GP100	GP300	S400	d	t	r	Holder	Page No.
RNGA 43	120400	149480 \$ 17.98	149482 \$ 18.91		0.500	0.187			



RNG



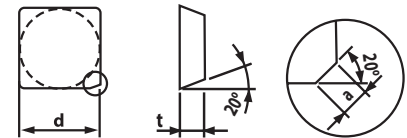
Designation	ISO	CERAMIC			(inch)			Applicable Holders	
		GP100	GP300	S400	d	t	r	Holder	Page No.
RNG 32	090300	149470 \$ 13.65			0.375	0.125			
RNG 33	090400	149472 \$ 14.37	149474 \$ 15.09		0.375	0.187			
RNG 43	120400	149476 \$ 17.98	149478 \$ 15.01		0.500	0.187			



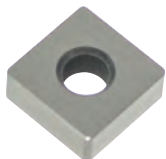
SEKN (For Milling)



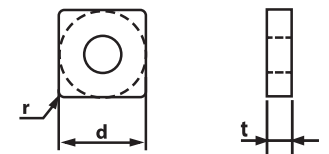
Designation	ISO	CERAMIC			(inch)			Applicable Holders	
		GP100	GP300	S300	d	t	r	Holder	Page No.
SEKN 42 AFTN	1203AFTN			149556 \$ 35.89	0.500	0.125	0.079		



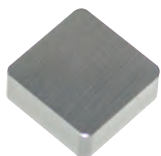
SNGA



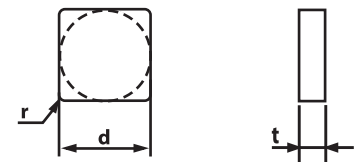
Designation	ISO	CERAMIC			(inch)			Applicable Holders	
		GP100	GP300	S400	d	t	r	Holder	Page No.
SNGA 432	120408	149586 \$ 14.30			0.500	0.187	0.031	Turning MSDNN E51 MSKNR/L E50 MSRNR/L E51	
SNGA 433	120412	149588 \$ 14.30	149590 \$ 15.02		0.500	0.187	0.047	Boring PSKNR/L E68	



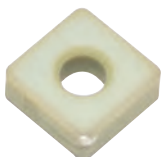
SNGN



Designation	ISO	CERAMIC			(inch)			Applicable Holders	
		GP100	GP300	S400	d	t	r	Holder	Page No.
SNGN 432	120408	149580 \$ 14.30			0.500	0.187	0.031		
SNGN 433	120412	149582 \$ 14.30	149584 \$ 15.02		0.500	0.187	0.047		



SNMA



Designation	ISO	CERAMIC			(inch)			Applicable Holders	
		GP100	GP300	S400	d	t	r	Holder	Page No.
SNMA 433	120412			149560 \$ 26.44	0.500	0.187	0.047	Turning MSDNN E51 MSKNR/L E50	
SNMA 434	120416			149594 \$ 21.45	0.500	0.187	0.063	Boring PSKNR/L E68	

